

Winchester

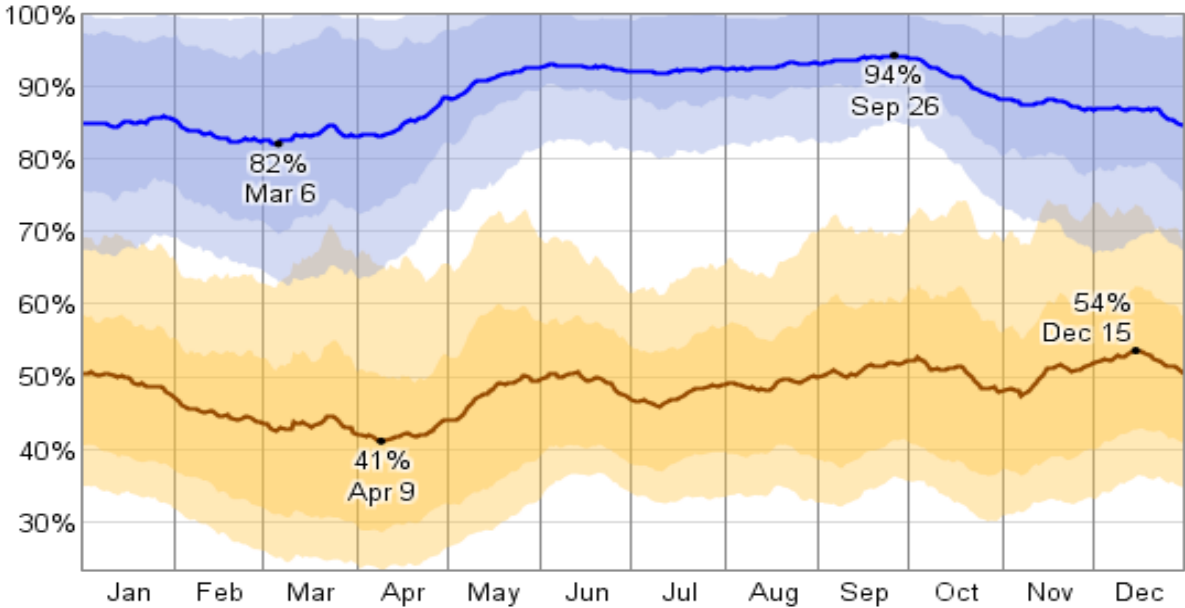
Humidity

The relative humidity typically ranges from 41% (comfortable) to 94% (very humid) over the course of the year, rarely dropping below 23% (dry) and reaching as high as 100% (very humid). The air is *driest* around April 9, at which time the relative humidity drops below 50% (mildly humid) three days out of four; it is *most humid* around September 26, exceeding 92% (very humid) three days out of four.

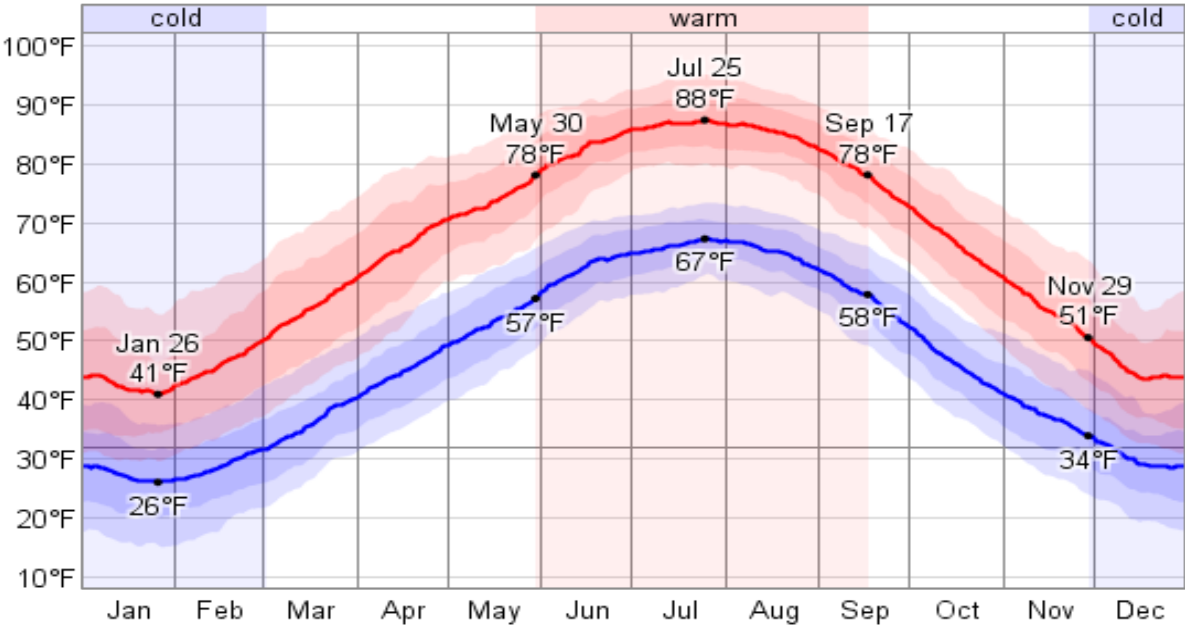
Temperature

Over the course of a year, the temperature typically varies from 26°F to 88°F and is rarely below 15°F or above 95°F.

Relative Humidity



Daily High and Low Temperature



Leesburg

Humidity

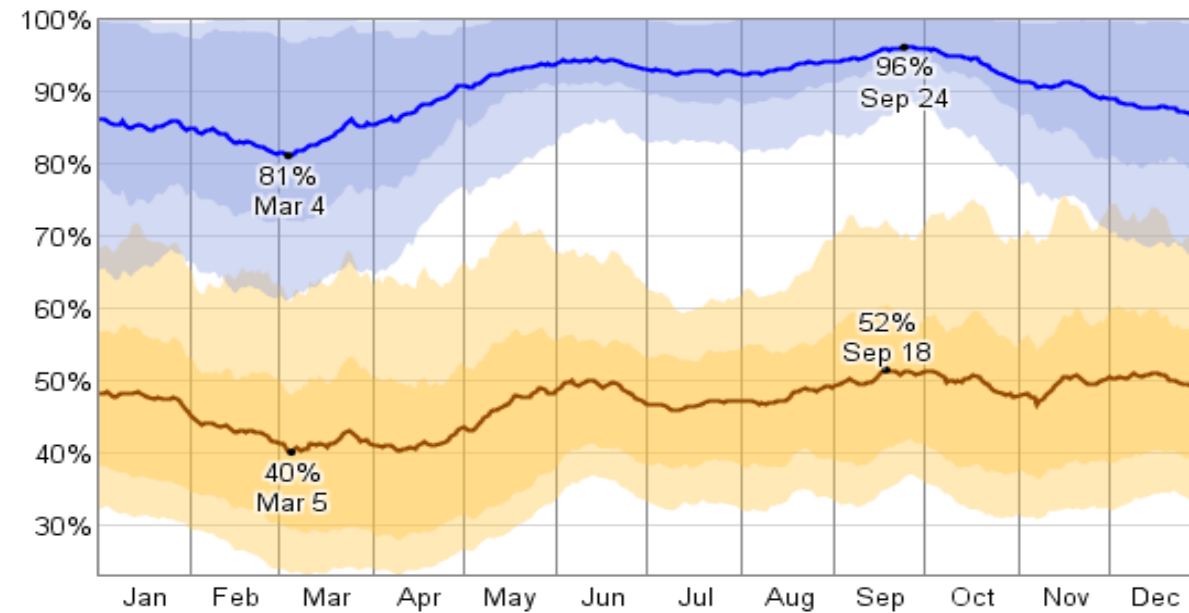
The relative humidity typically ranges from 40% (comfortable) to 96% (very humid) over the course of the year, rarely dropping below 23% (dry) and reaching as high as 100% (very humid).

The air is *driest* around March 5, at which time the relative humidity drops below 48% (comfortable) three days out of four; it is *most humid* around September 24, exceeding 95% (very humid) three days out of four.

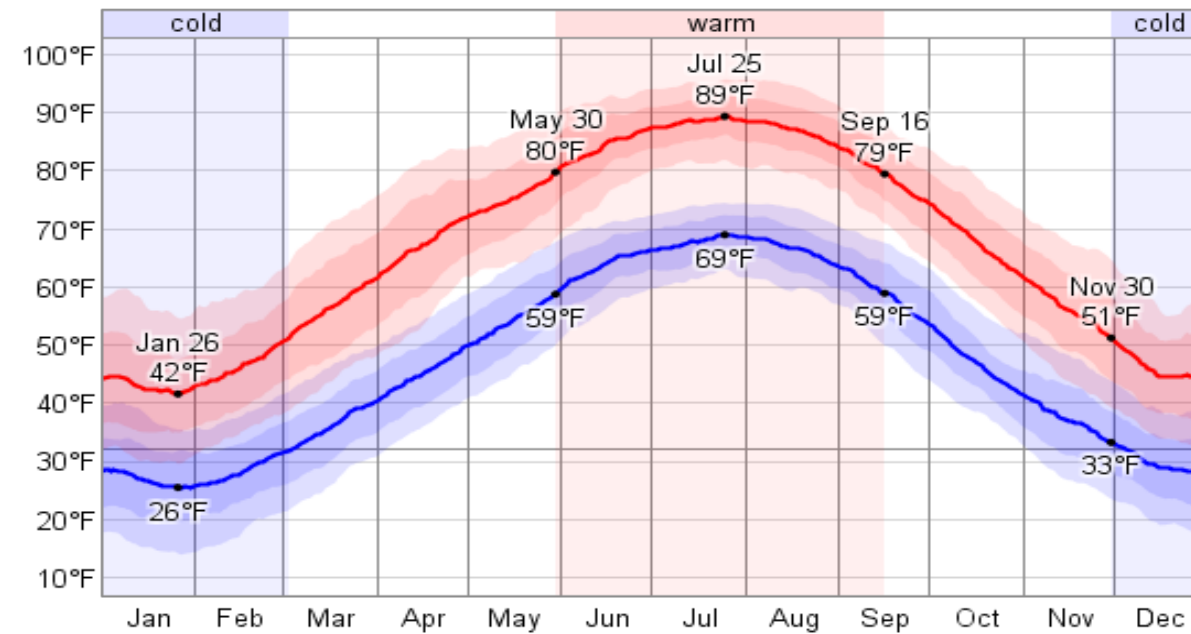
Temperature

Over the course of a year, the temperature typically varies from 26°F to 89°F and is rarely below 14°F or above 96°F.

Relative Humidity



Daily High and Low Temperature



Charlottesville

Humidity

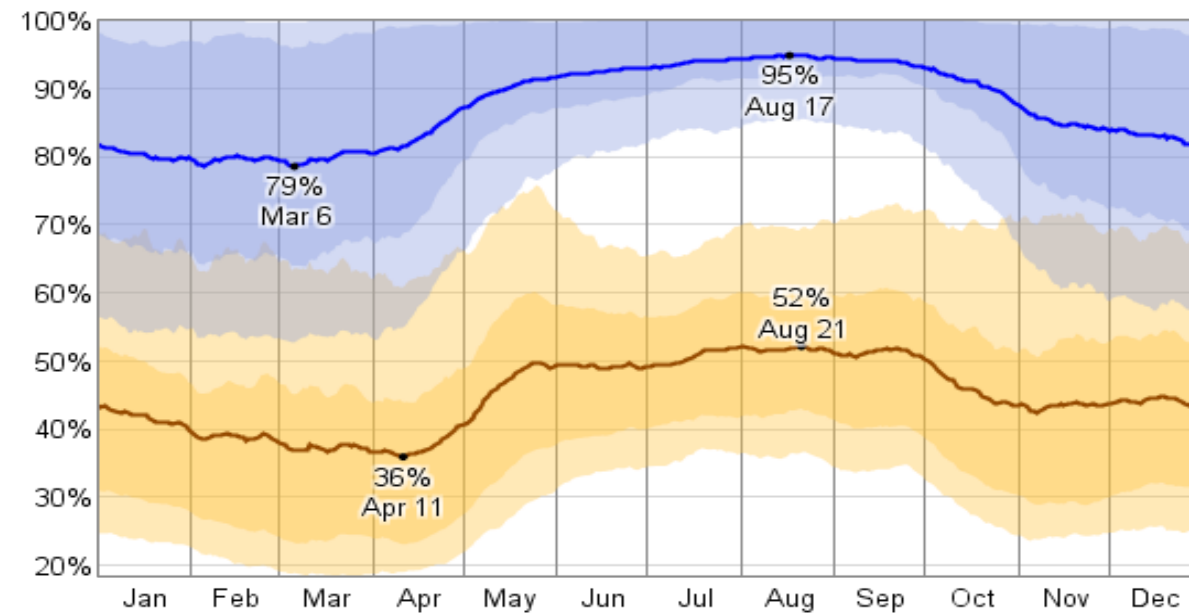
The relative humidity typically ranges from 36% (comfortable) to 95% (very humid) over the course of the year, rarely dropping below 18% (dry) and reaching as high as 100% (very humid).

The air is *driest* around April 11, at which time the relative humidity drops below 44% (comfortable) three days out of four; it is *most humid* around August 17, exceeding 92% (very humid) three days out of four.

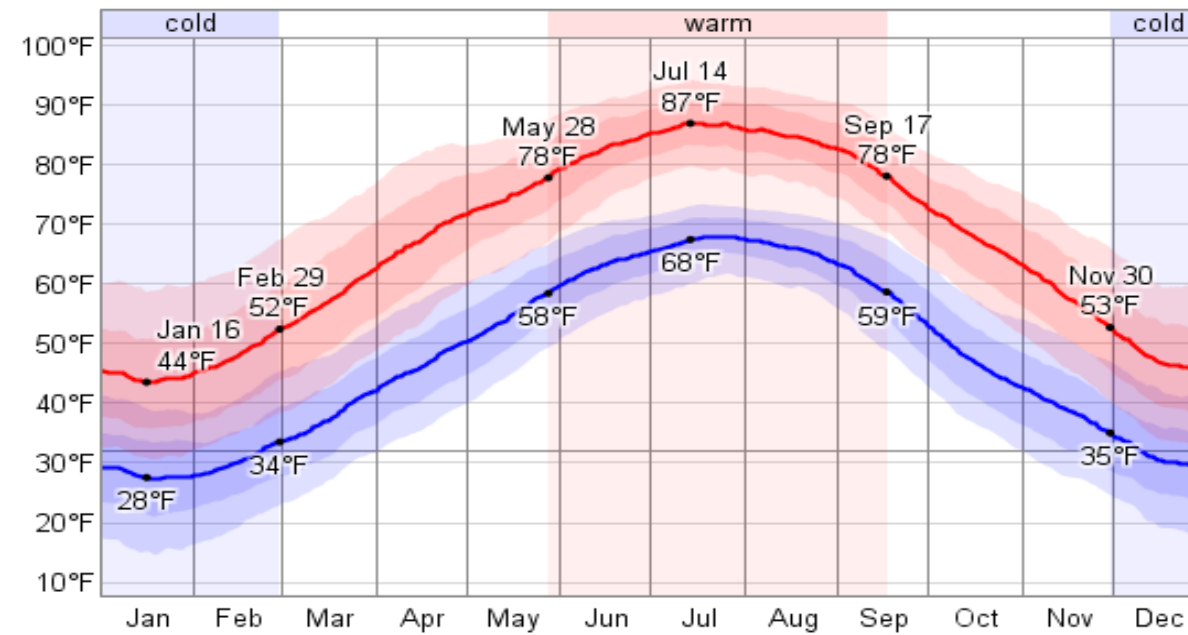
Temperature

Over the course of a year, the temperature typically varies from 27°F to 87°F and is rarely below 15°F or above 94°F.

Relative Humidity



Daily High and Low Temperature



Stafford

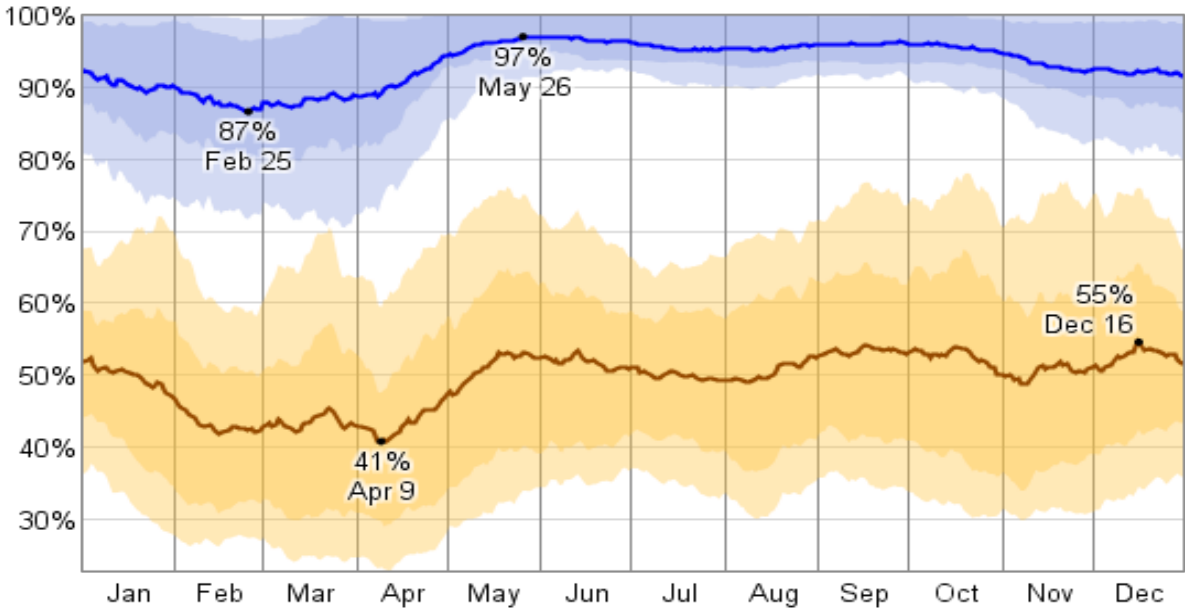
Humidity

The relative humidity typically ranges from 41% (comfortable) to 97% (very humid) over the course of the year, rarely dropping below 23% (dry) and reaching as high as 100% (very humid). The air is *driest* around April 9, at which time the relative humidity drops below 48% (comfortable) three days out of four; it is *most humid* around May 26, exceeding 95% (very humid) three days out of four.

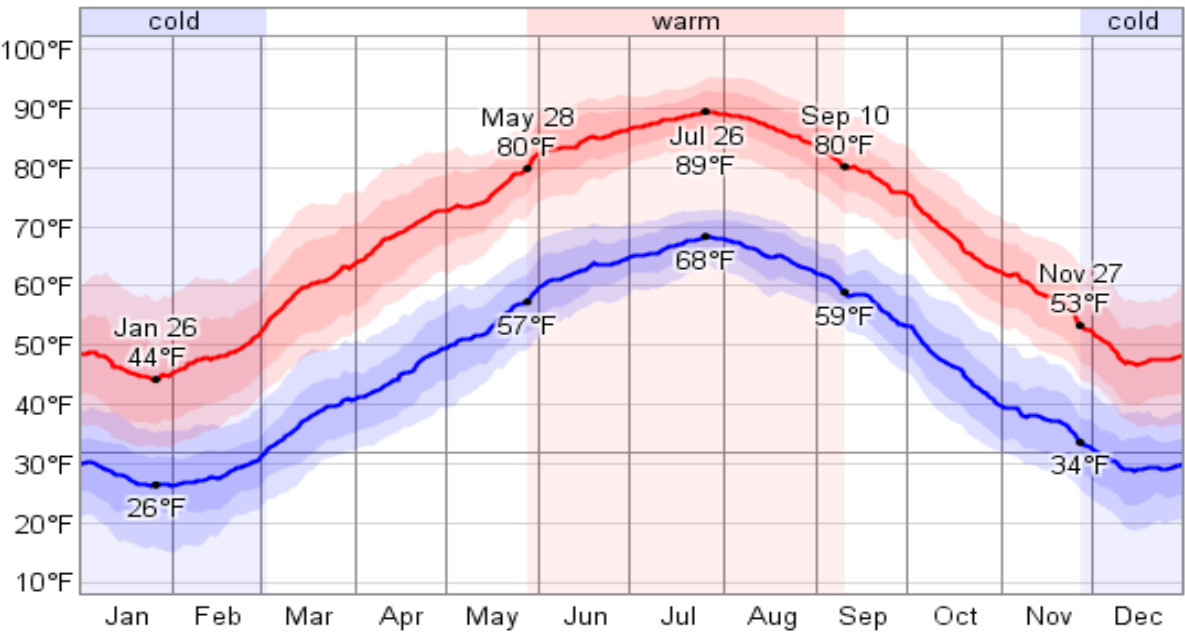
Temperature

Over the course of a year, the temperature typically varies from 26°F to 89°F and is rarely below 15°F or above 95°F.

Relative Humidity



Daily High and Low Temperature



Lynchburg

Humidity

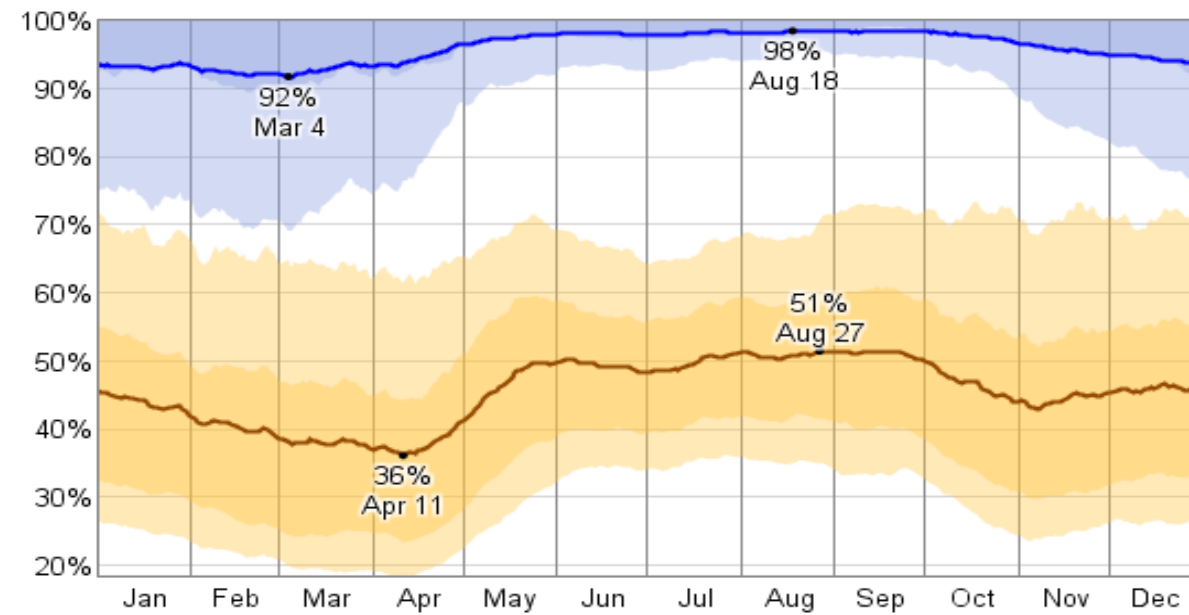
The relative humidity typically ranges from 36% (comfortable) to 98% (very humid) over the course of the year, rarely dropping below 18% (dry) and reaching as high as 100% (very humid).

The air is *driest* around April 11, at which time the relative humidity drops below 44% (comfortable) three days out of four; it is *most humid* around August 18, exceeding 99% (very humid) three days out of four.

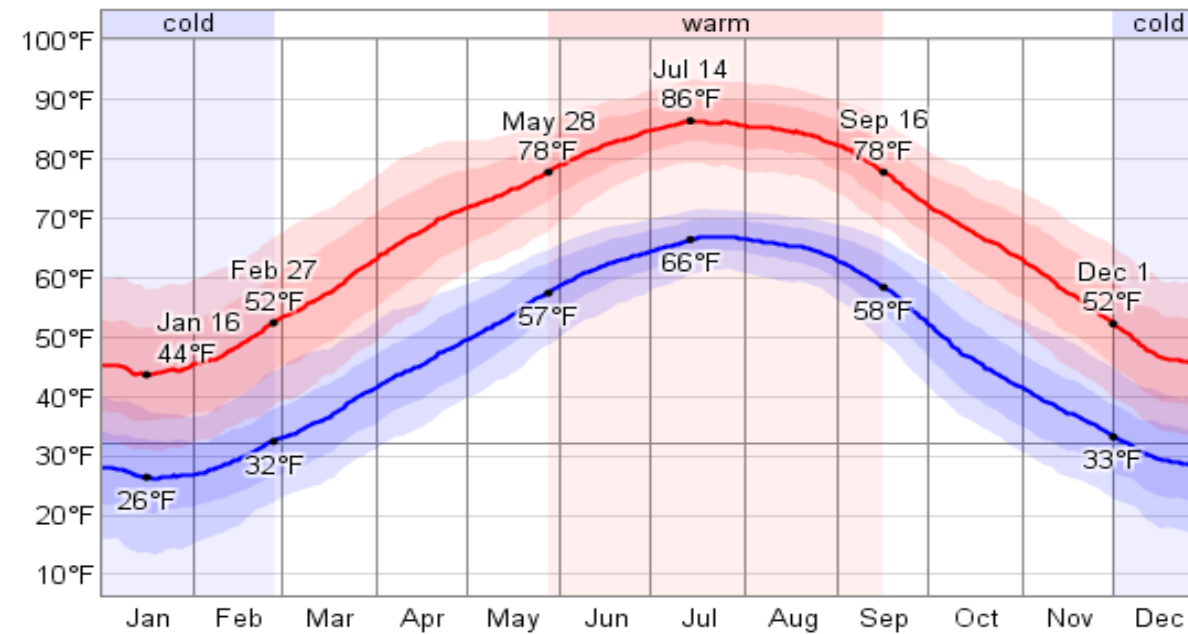
Temperature

Over the course of a year, the temperature typically varies from 26°F to 86°F and is rarely below 13°F or above 93°F.

Relative Humidity



Daily High and Low Temperature



Roanoke

Humidity

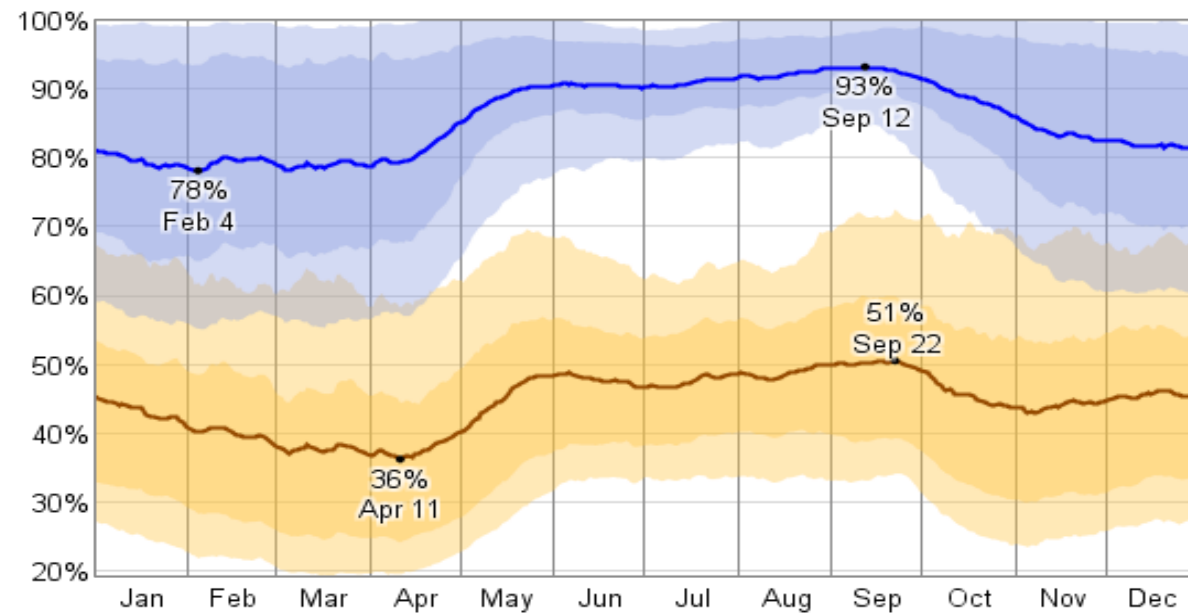
The relative humidity typically ranges from 36% (comfortable) to 93% (very humid) over the course of the year, rarely dropping below 19% (dry) and reaching as high as 100% (very humid).

The air is *driest* around April 11, at which time the relative humidity drops below 44% (comfortable) three days out of four; it is *most humid* around September 12, exceeding 90% (very humid) three days out of four.

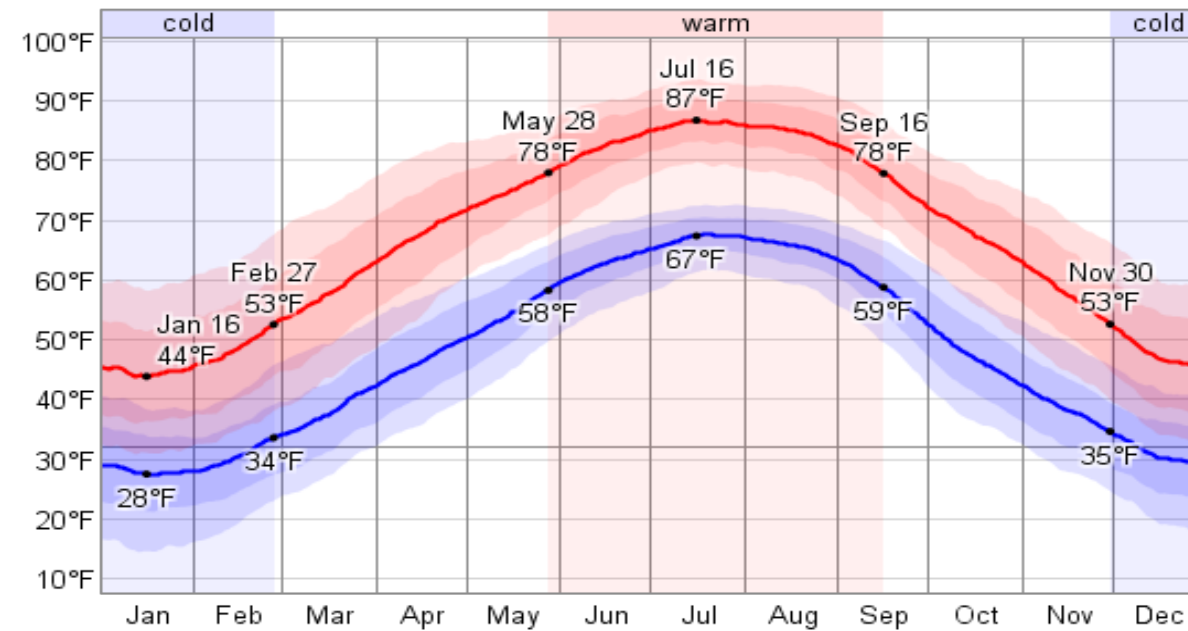
Temperature

Over the course of a year, the temperature typically varies from 27°F to 87°F and is rarely below 14°F or above 94°F.

Relative Humidity



Daily High and Low Temperature



Blacksburg

Humidity

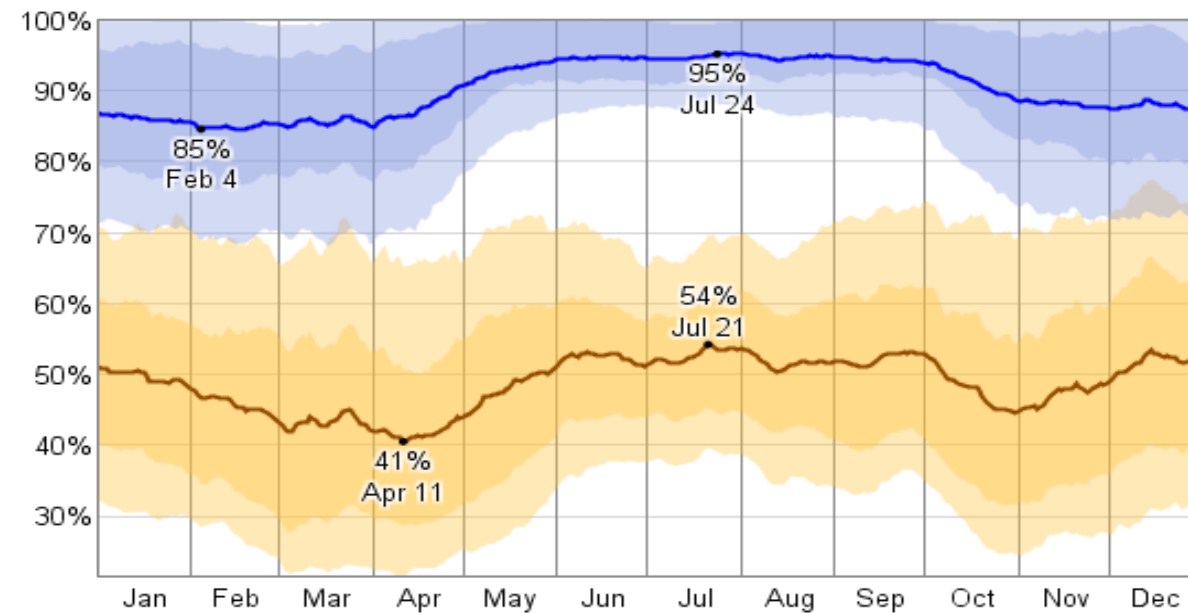
The relative humidity typically ranges from 41% (comfortable) to 95% (very humid) over the course of the year, rarely dropping below 22% (dry) and reaching as high as 100% (very humid).

The air is *driest* around April 11, at which time the relative humidity drops below 51% (mildly humid) three days out of four; it is *most humid* around July 24, exceeding 93% (very humid) three days out of four.

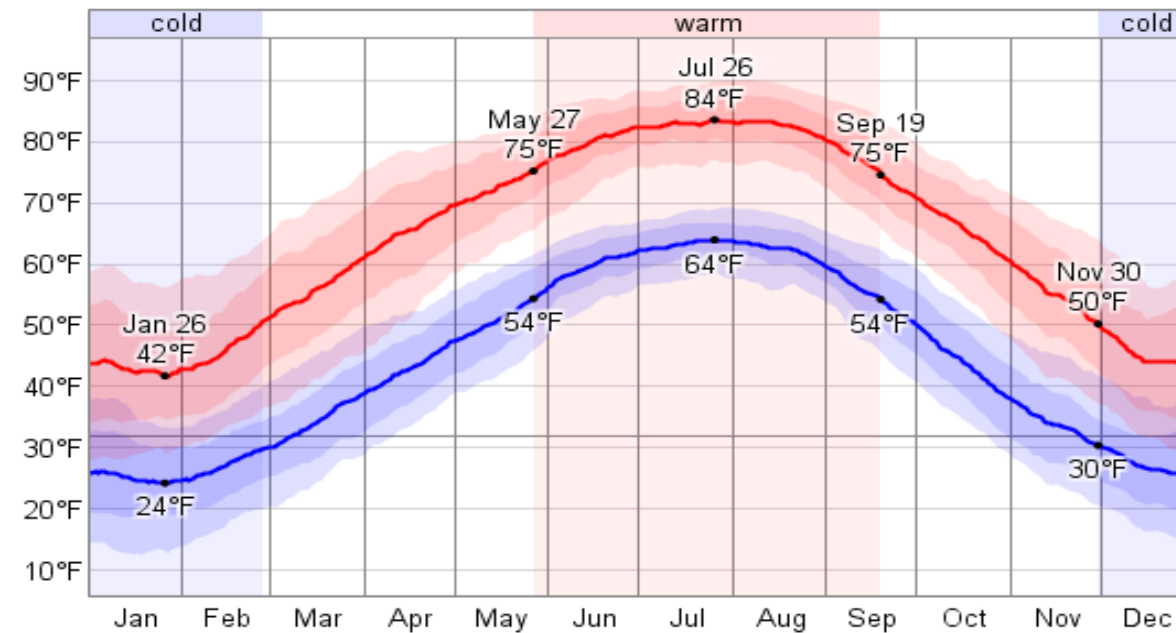
Temperature

Over the course of a year, the temperature typically varies from 24°F to 84°F and is rarely below 13°F or above 90°F.

Relative Humidity



Daily High and Low Temperature



Wytheville

Humidity

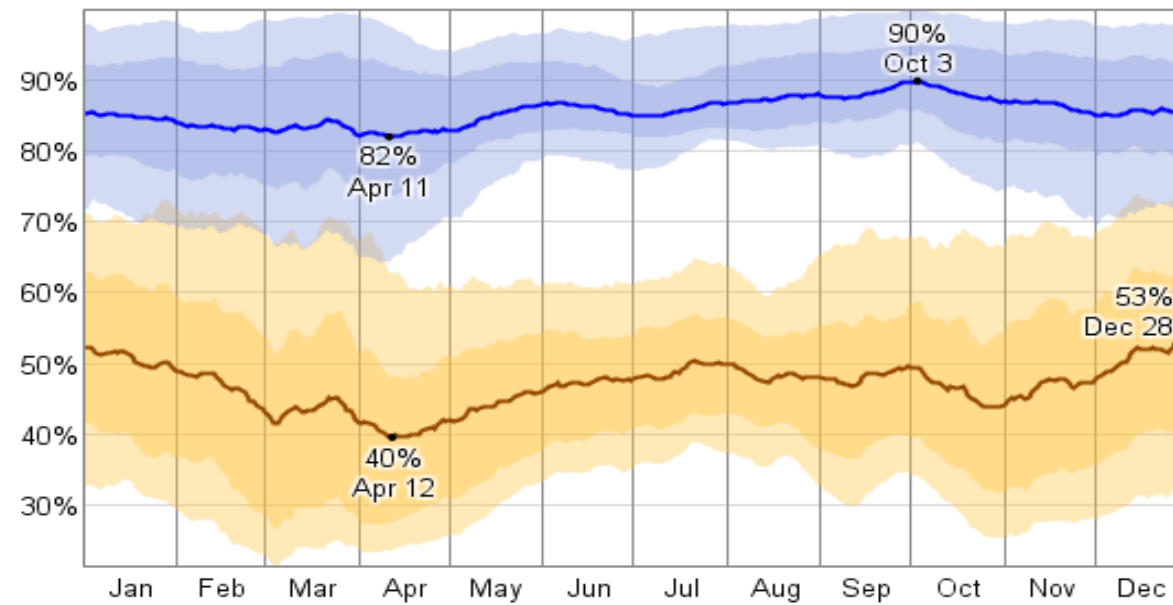
The relative humidity typically ranges from 40% (comfortable) to 90% (very humid) over the course of the year, rarely dropping below 21% (dry) and reaching as high as 100% (very humid).

The air is *driest* around April 12, at which time the relative humidity drops below 48% (comfortable) three days out of four; it is *most humid* around October 3, exceeding 86% (very humid) three days out of four.

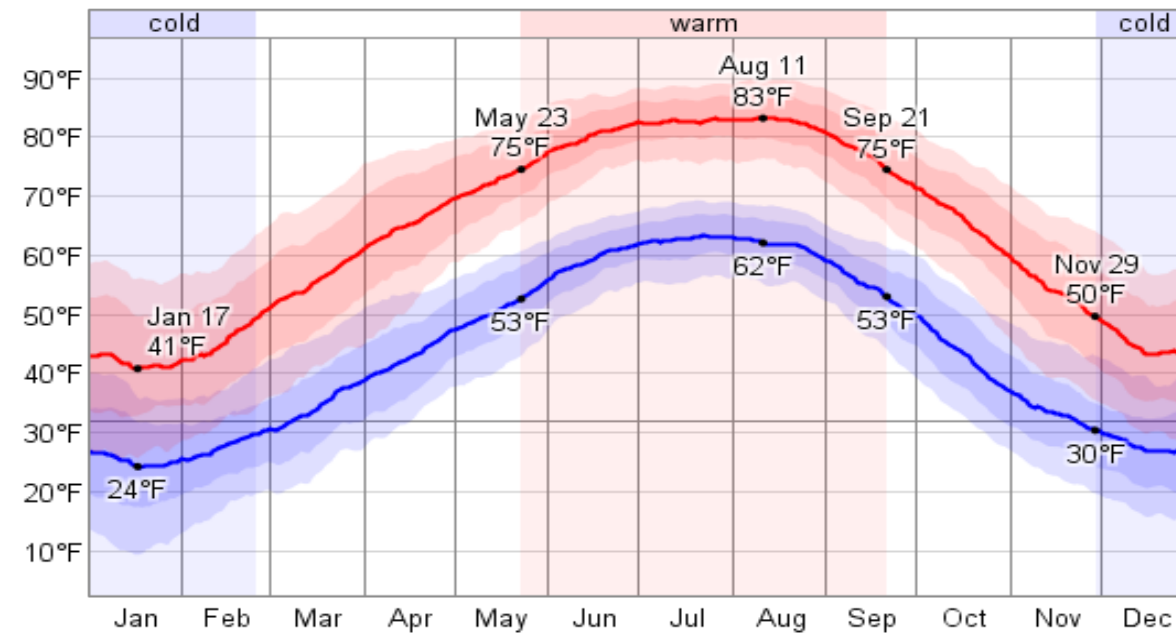
Temperature

Over the course of a year, the temperature typically varies from 24°F to 83°F and is rarely below 9°F or above 90°F.

Relative Humidity



Daily High and Low Temperature



Abingdon

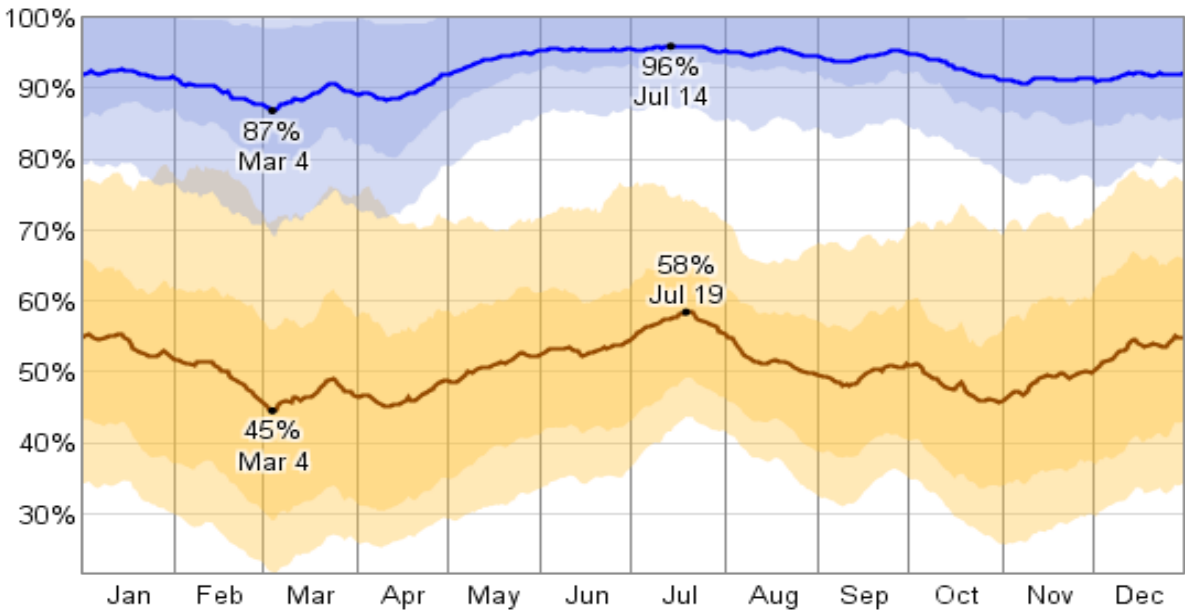
Humidity

The relative humidity typically ranges from 45% (comfortable) to 96% (very humid) over the course of the year, rarely dropping below 22% (dry) and reaching as high as 100% (very humid). The air is *driest* around March 4, at which time the relative humidity drops below 56% (mildly humid) three days out of four; it is *most humid* around July 14, exceeding 93% (very humid) three days out of four.

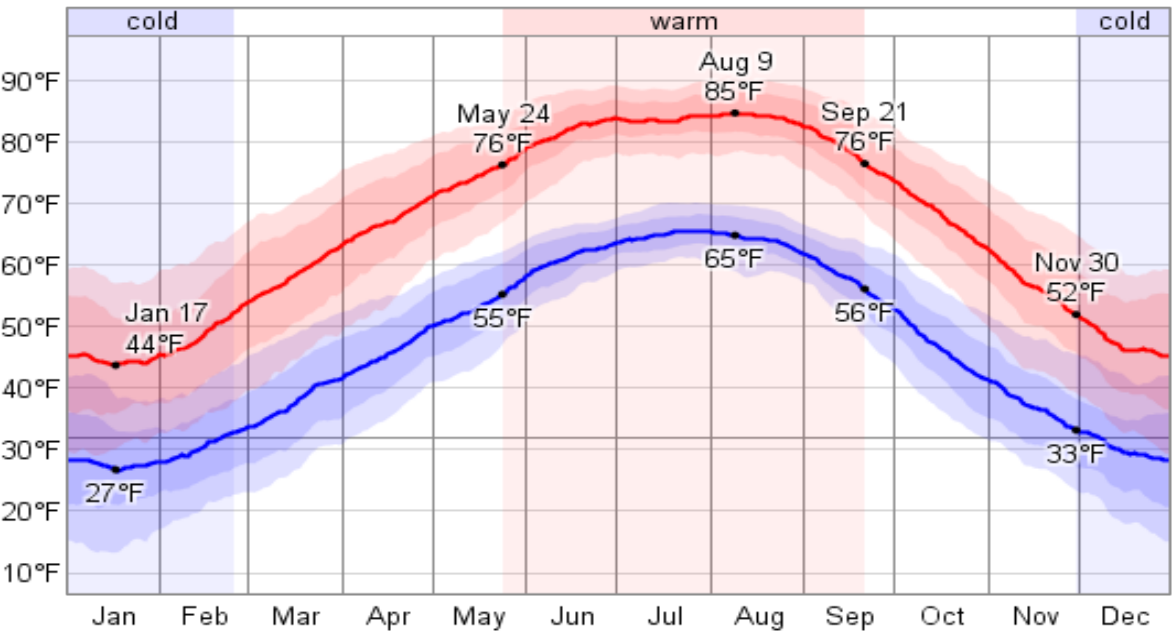
Temperature

Over the course of a year, the temperature typically varies from 27°F to 85°F and is rarely below 13°F or above 90°F.

Relative Humidity



Daily High and Low Temperature



Martinsville

Humidity

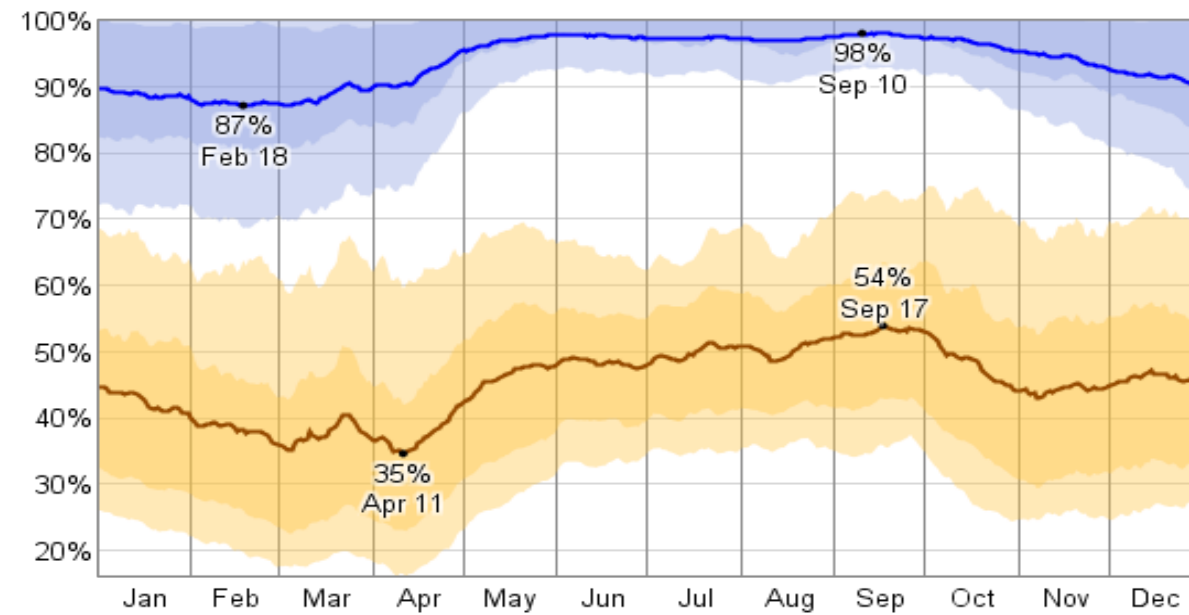
The relative humidity typically ranges from 35% (comfortable) to 98% (very humid) over the course of the year, rarely dropping below 16% (dry) and reaching as high as 100% (very humid).

The air is *driest* around April 11, at which time the relative humidity drops below 42% (comfortable) three days out of four; it is *most humid* around September 10, exceeding 99% (very humid) three days out of four.

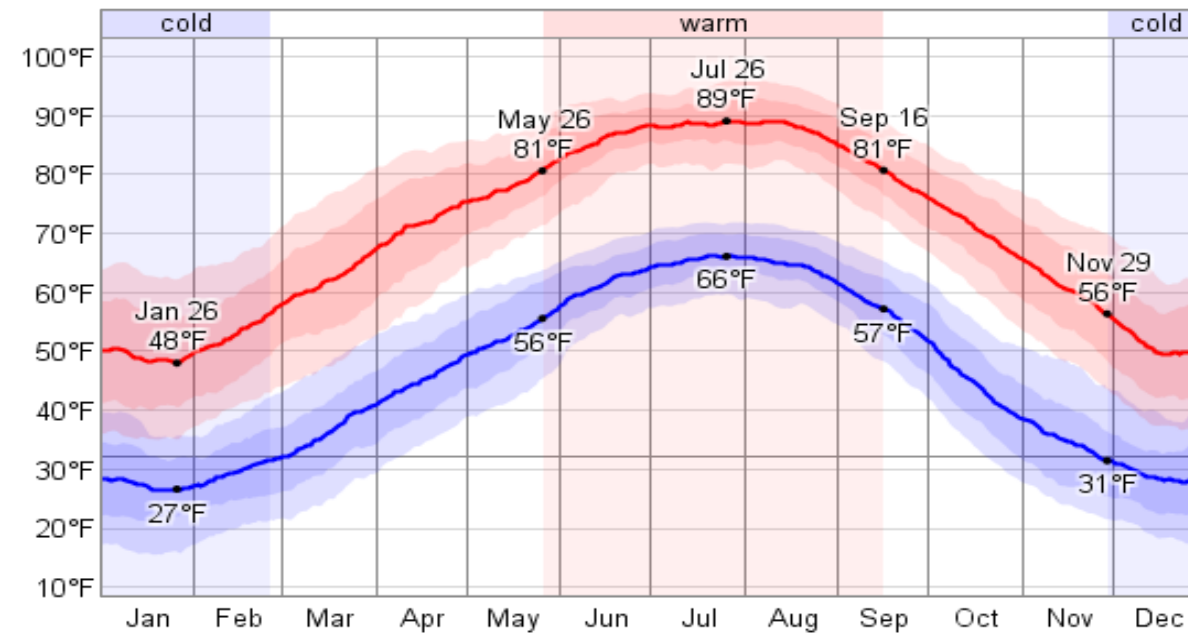
Temperature

Over the course of a year, the temperature typically varies from 26°F to 89°F and is rarely below 15°F or above 96°F.

Relative Humidity



Daily High and Low Temperature



South Hill

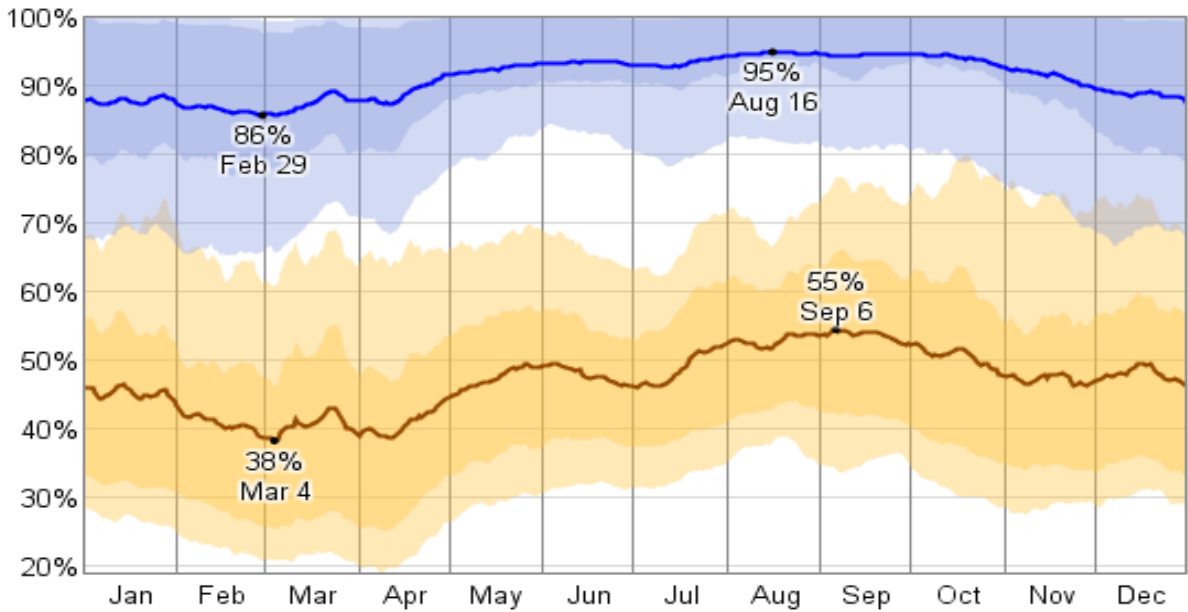
Humidity

The relative humidity typically ranges from 38% (comfortable) to 95% (very humid) over the course of the year, rarely dropping below 19% (dry) and reaching as high as 100% (very humid). The air is *driest* around March 4, at which time the relative humidity drops below 46% (comfortable) three days out of four; it is *most humid* around August 16, exceeding 92% (very humid) three days out of four.

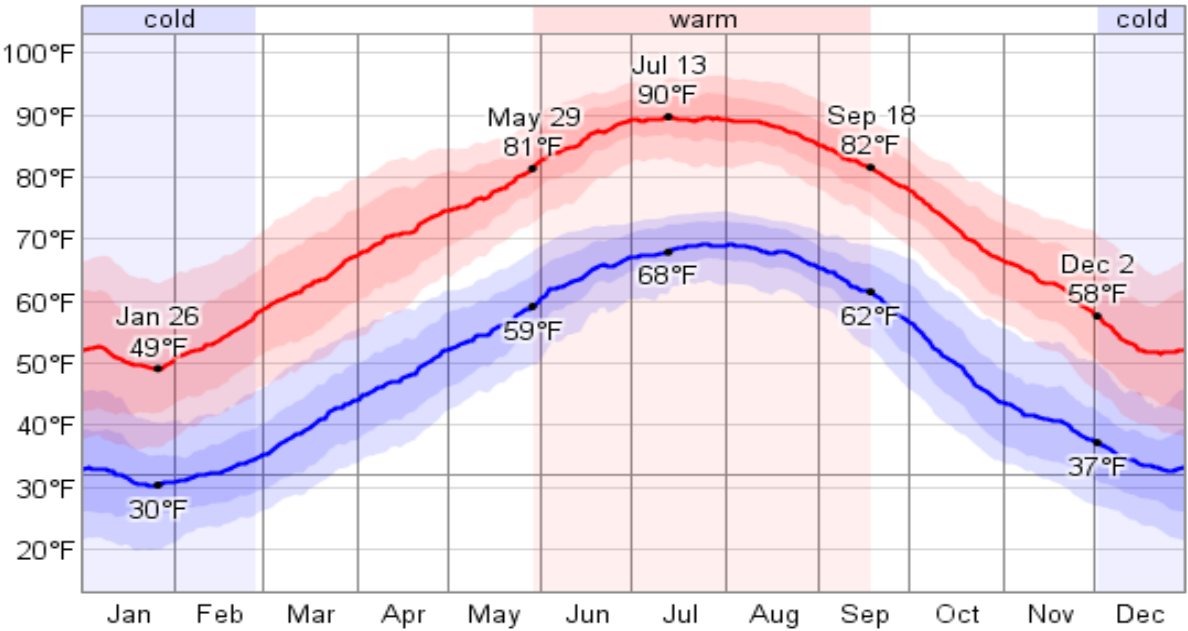
Temperature

Over the course of a year, the temperature typically varies from 30°F to 90°F and is rarely below 20°F or above 96°F.

Relative Humidity



Daily High and Low Temperature



Emporia

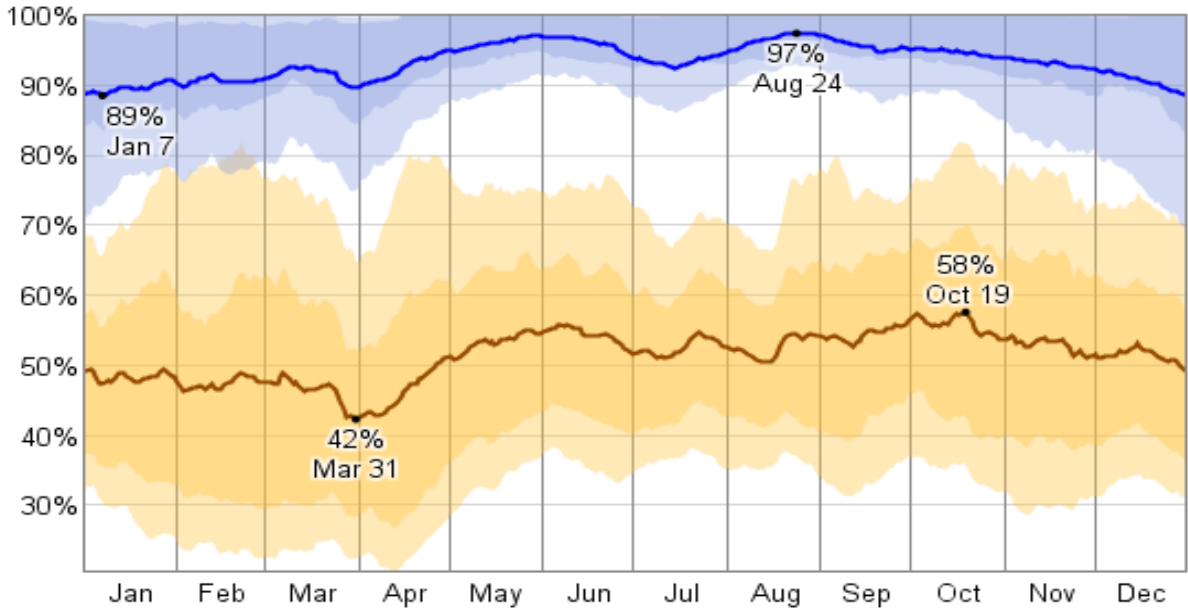
Humidity

The relative humidity typically ranges from 42% (comfortable) to 97% (very humid) over the course of the year, rarely dropping below 21% (dry) and reaching as high as 100% (very humid). The air is *driest* around March 31, at which time the relative humidity drops below 52% (mildly humid) three days out of four; it is *most humid* around August 24, exceeding 95% (very humid) three days out of four.

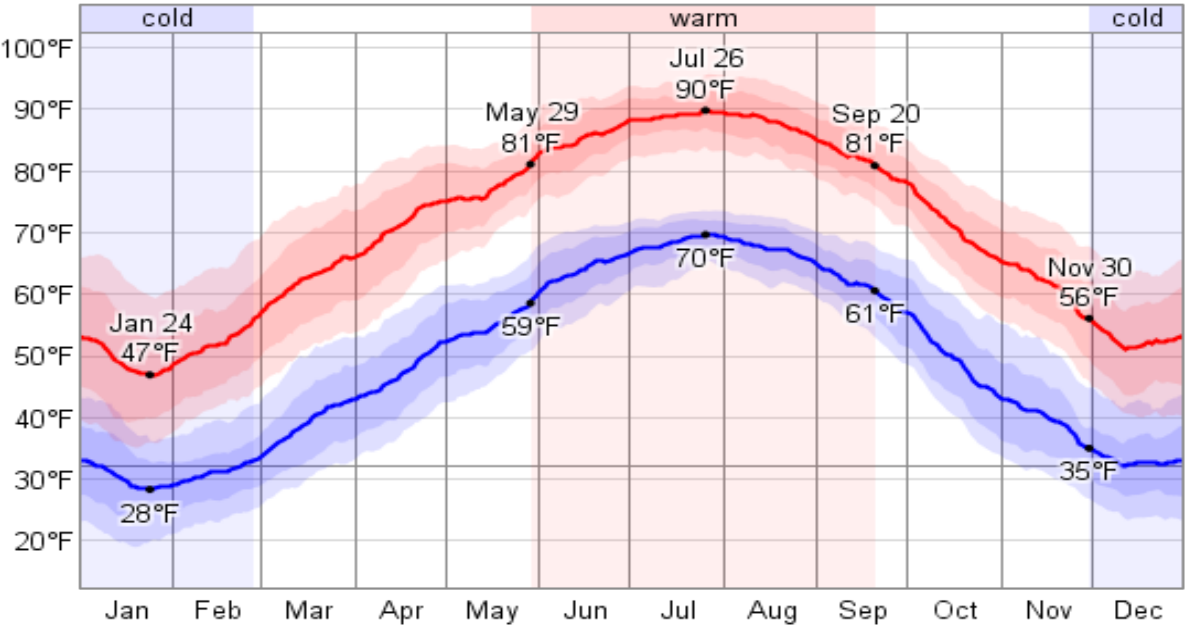
Temperature

Over the course of a year, the temperature typically varies from 28°F to 90°F and is rarely below 19°F or above 96°F.

Relative Humidity



Daily High and Low Temperature



Suffolk

Humidity

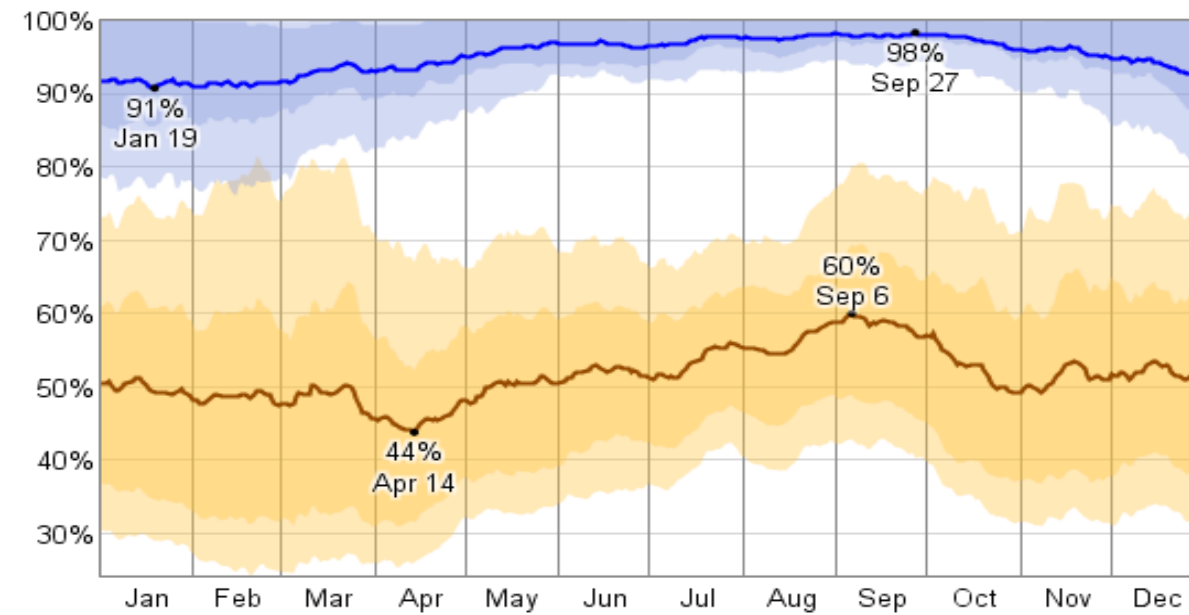
The relative humidity typically ranges from 44% (comfortable) to 98% (very humid) over the course of the year, rarely dropping below 24% (dry) and reaching as high as 100% (very humid).

The air is *driest* around April 14, at which time the relative humidity drops below 52% (mildly humid) three days out of four; it is *most humid* around September 27, exceeding 98% (very humid) three days out of four.

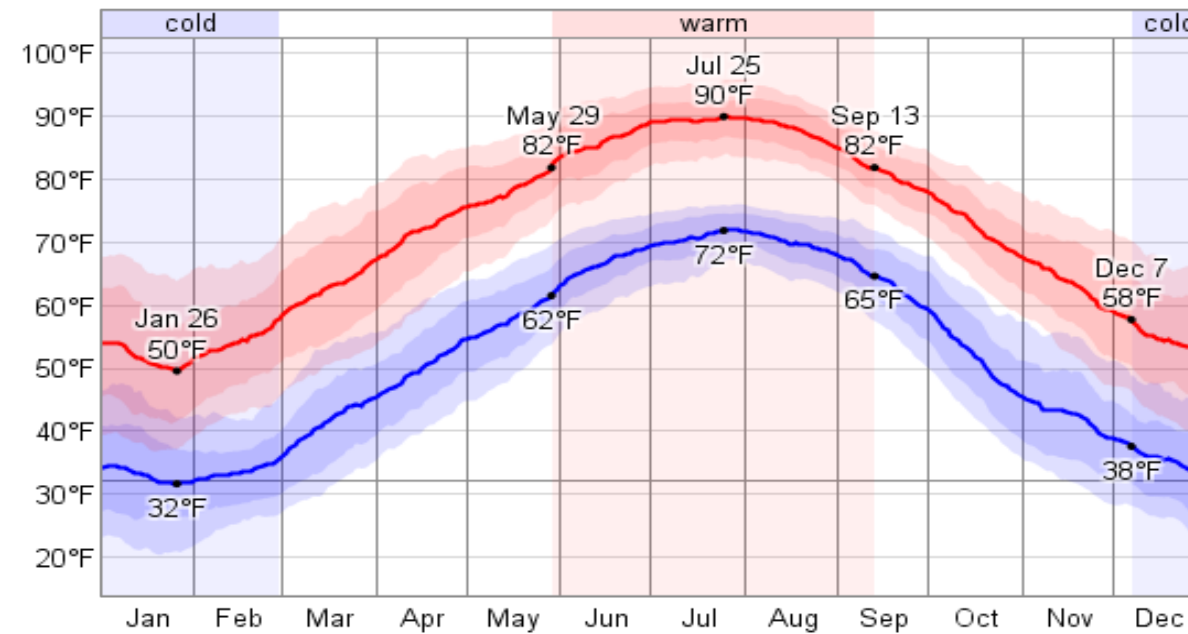
Temperature

Over the course of a year, the temperature typically varies from 32°F to 90°F and is rarely below 20°F or above 96°F.

Relative Humidity



Daily High and Low Temperature



Norfolk (Norfolk Naval Station)

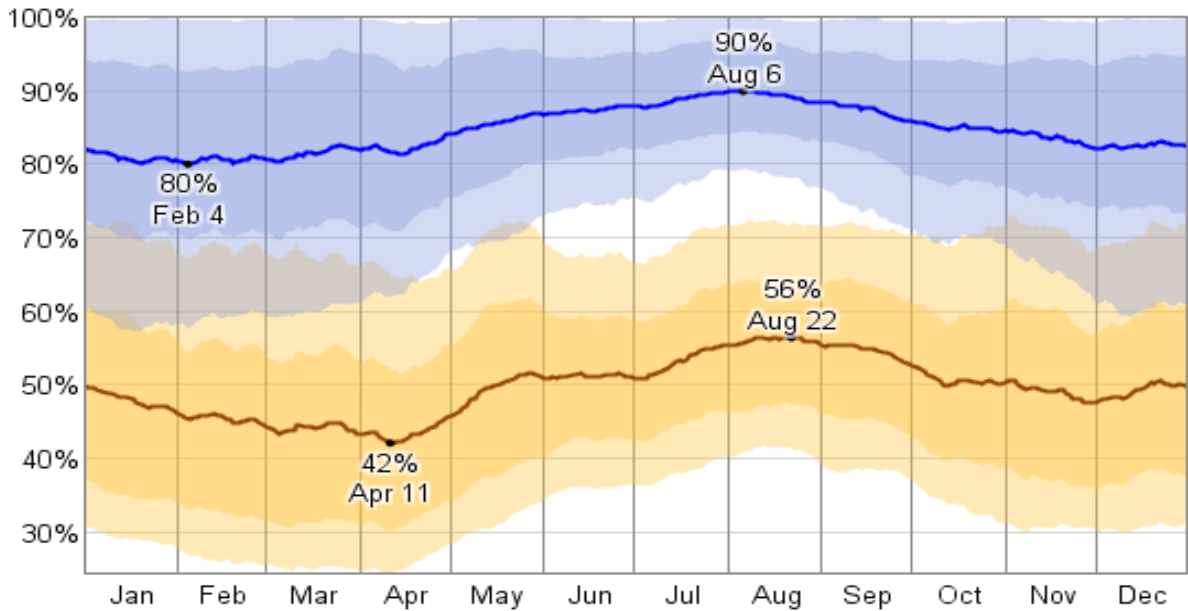
Humidity

The relative humidity typically ranges from 42% (comfortable) to 90% (very humid) over the course of the year, rarely dropping below 24% (dry) and reaching as high as 100% (very humid). The air is *driest* around April 11, at which time the relative humidity drops below 52% (mildly humid) three days out of four; it is *most humid* around August 6, exceeding 85% (humid) three days out of four.

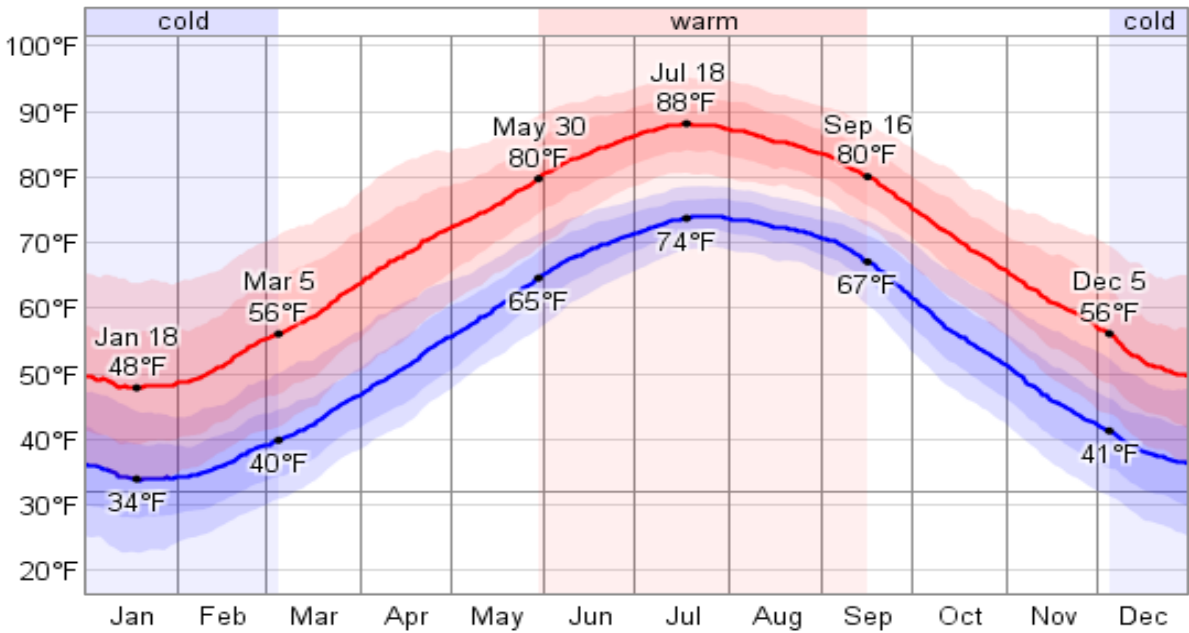
Temperature

Over the course of a year, the temperature typically varies from 34°F to 88°F and is rarely below 23°F or above 95°F.

Relative Humidity



Daily High and Low Temperature



Richmond

Humidity

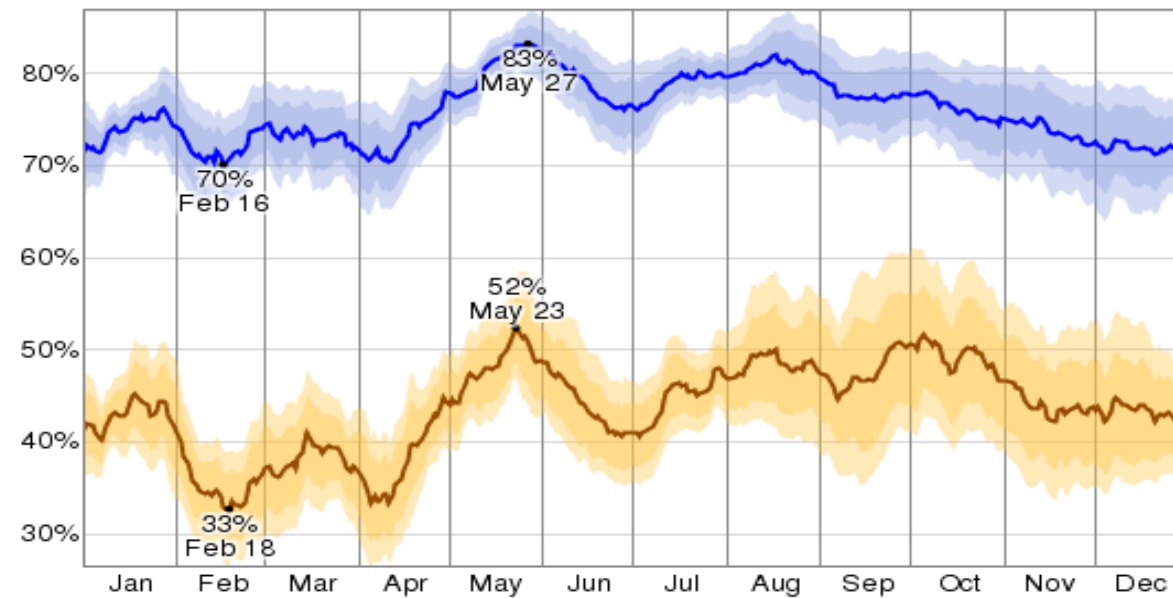
The relative humidity typically ranges from 33% (comfortable) to 83% (humid) over the course of the year, rarely dropping below 26% (dry), or exceeding 87% (very humid).

The air is *driest* around February 18, at which time the relative humidity drops below 37% (comfortable) three days out of four; it is *most humid* around May 27, exceeding 81% (humid) three days out of four.

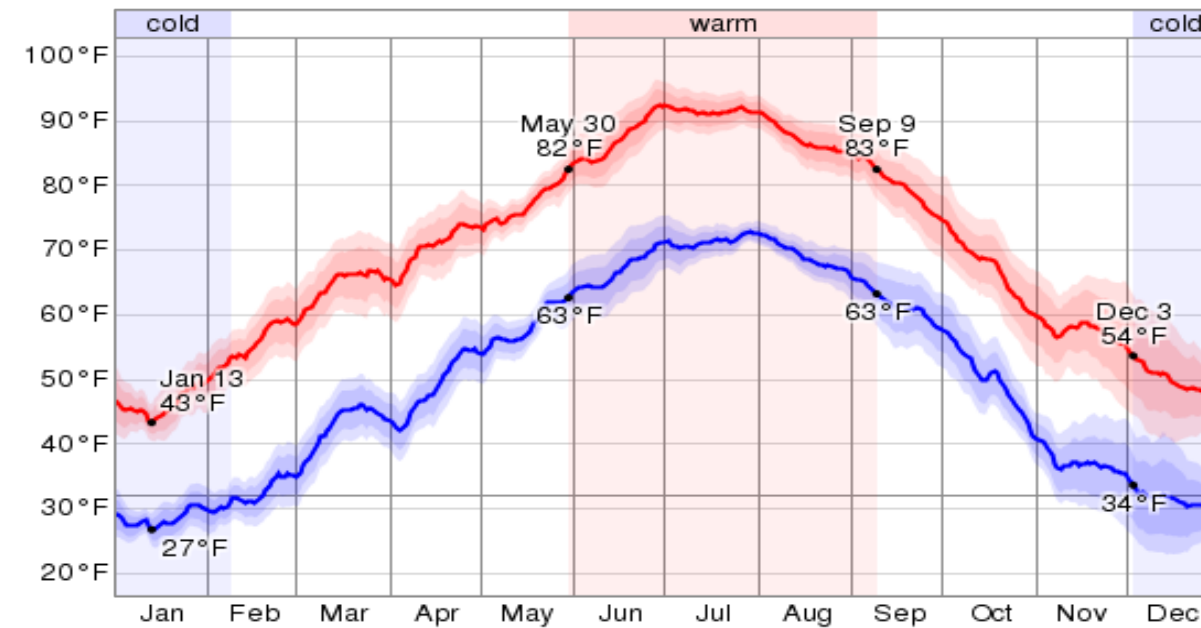
Temperature

Over the course of a year, the temperature typically varies from 27°F to 92°F and is rarely below 23°F or above 96°F.

Relative Humidity



Daily High and Low Temperature



Newport News

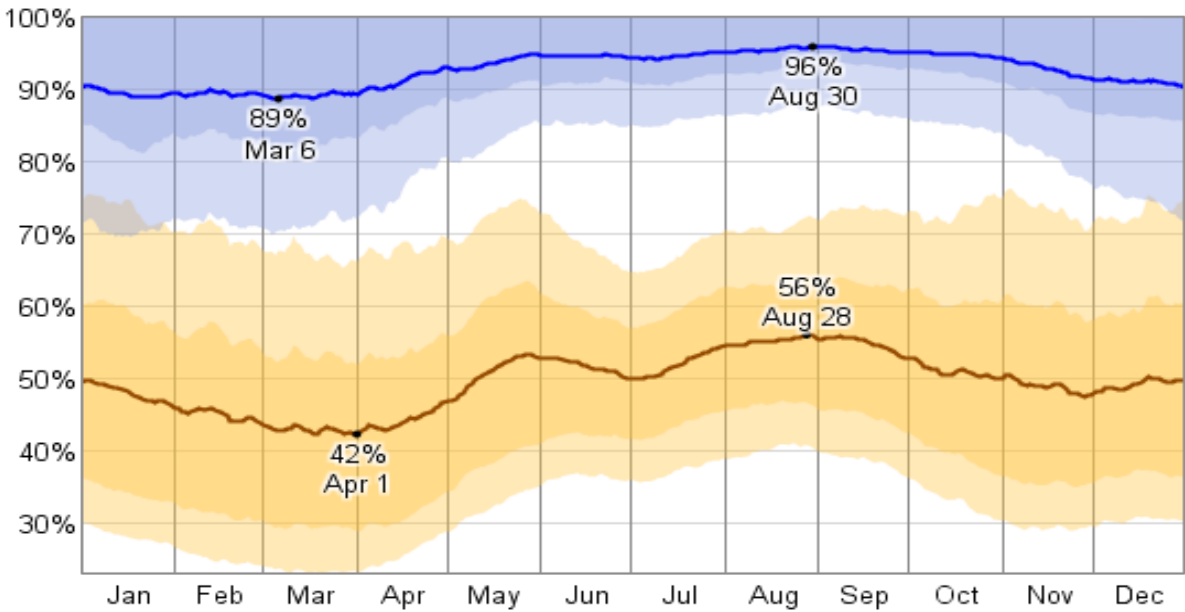
Humidity

The relative humidity typically ranges from 42% (comfortable) to 96% (very humid) over the course of the year, rarely dropping below 23% (dry) and reaching as high as 100% (very humid). The air is *driest* around April 1, at which time the relative humidity drops below 52% (mildly humid) three days out of four; it is *most humid* around August 30, exceeding 94% (very humid) three days out of four.

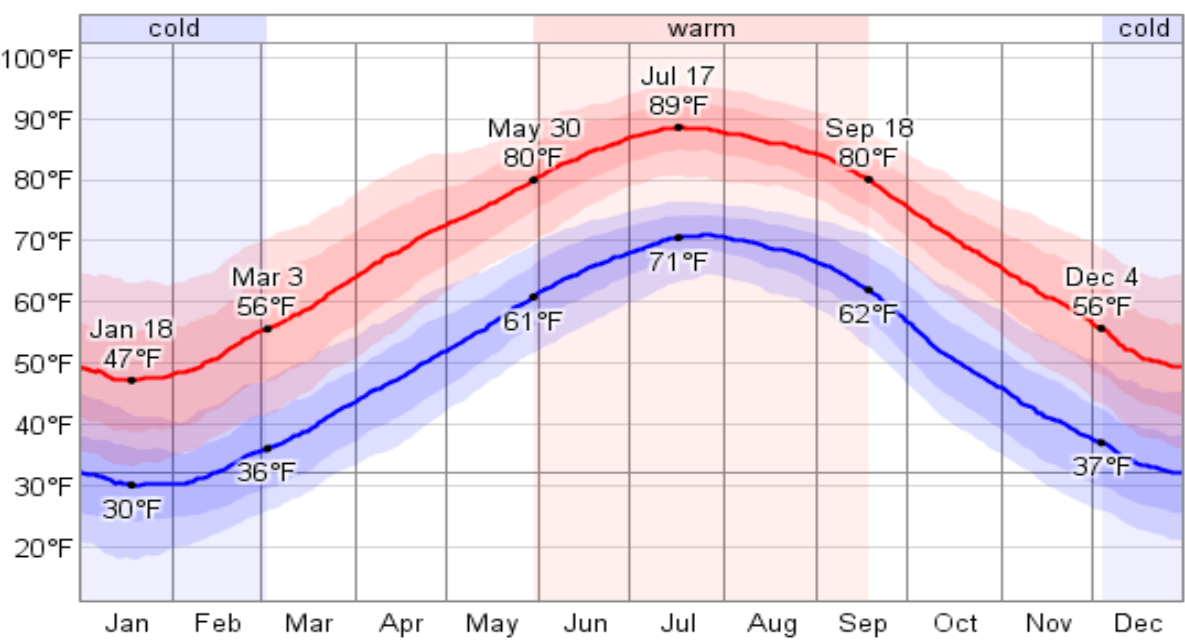
Temperature

Over the course of a year, the temperature typically varies from 30°F to 89°F and is rarely below 18°F or above 96°F.

Relative Humidity



Daily High and Low Temperature



West Point

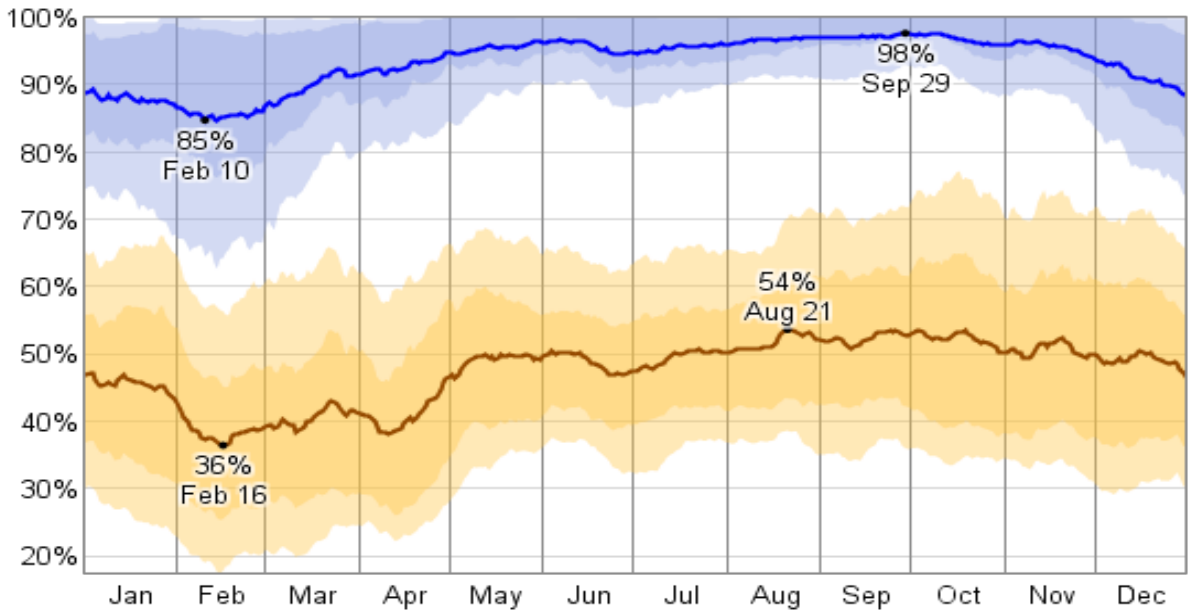
Humidity

The relative humidity typically ranges from 36% (comfortable) to 98% (very humid) over the course of the year, rarely dropping below 17% (dry) and reaching as high as 100% (very humid). The air is *driest* around February 16, at which time the relative humidity drops below 45% (comfortable) three days out of four; it is *most humid* around September 29, exceeding 98% (very humid) three days out of four.

Temperature

Over the course of a year, the temperature typically varies from 30°F to 91°F and is rarely below 21°F or above 97°F.

Relative Humidity



Daily High and Low Temperature

