

Hagerstown

Humidity

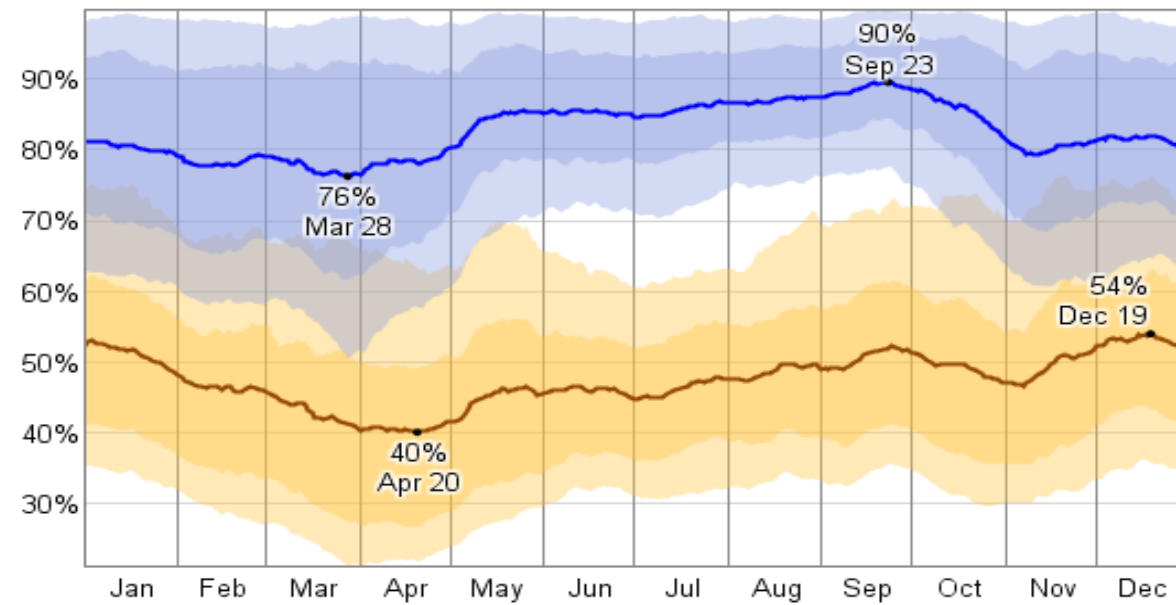
The relative humidity typically ranges from 40% (comfortable) to 90% (very humid) over the course of the year, rarely dropping below 21% (dry) and reaching as high as 100% (very humid).

The air is *driest* around April 20, at which time the relative humidity drops below 49% (comfortable) three days out of four; it is *most humid* around September 23, exceeding 84% (humid) three days out of four.

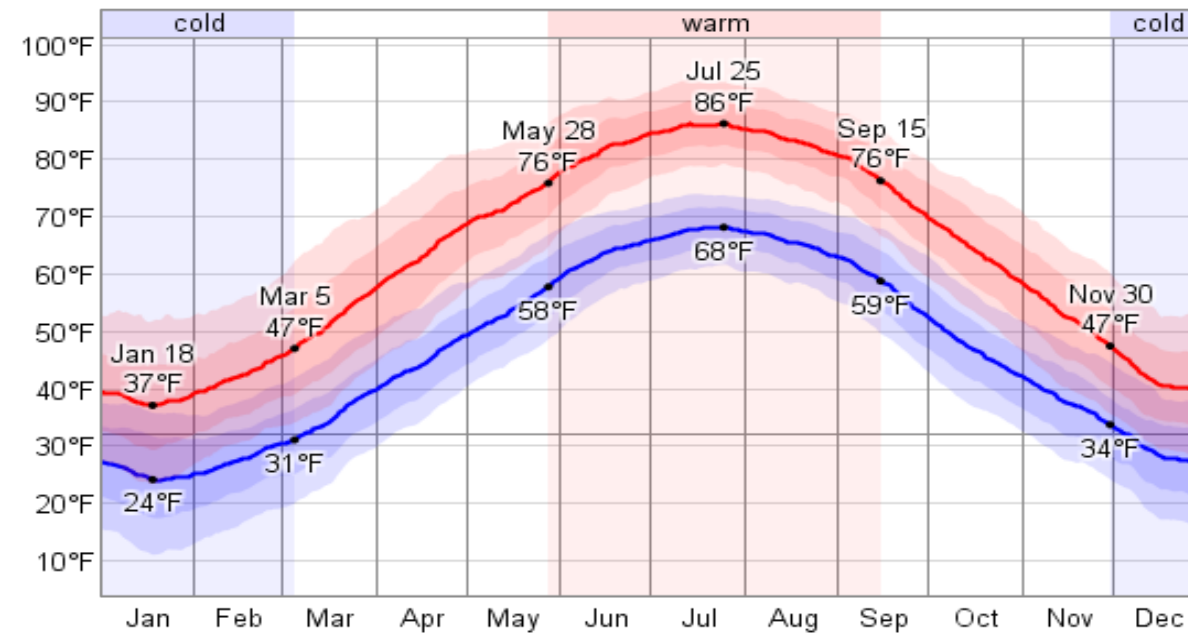
Temperature

Over the course of a year, the temperature typically varies from 24°F to 86°F and is rarely below 11°F or above 94°F.

Relative Humidity



Daily High and Low Temperature



Frederick

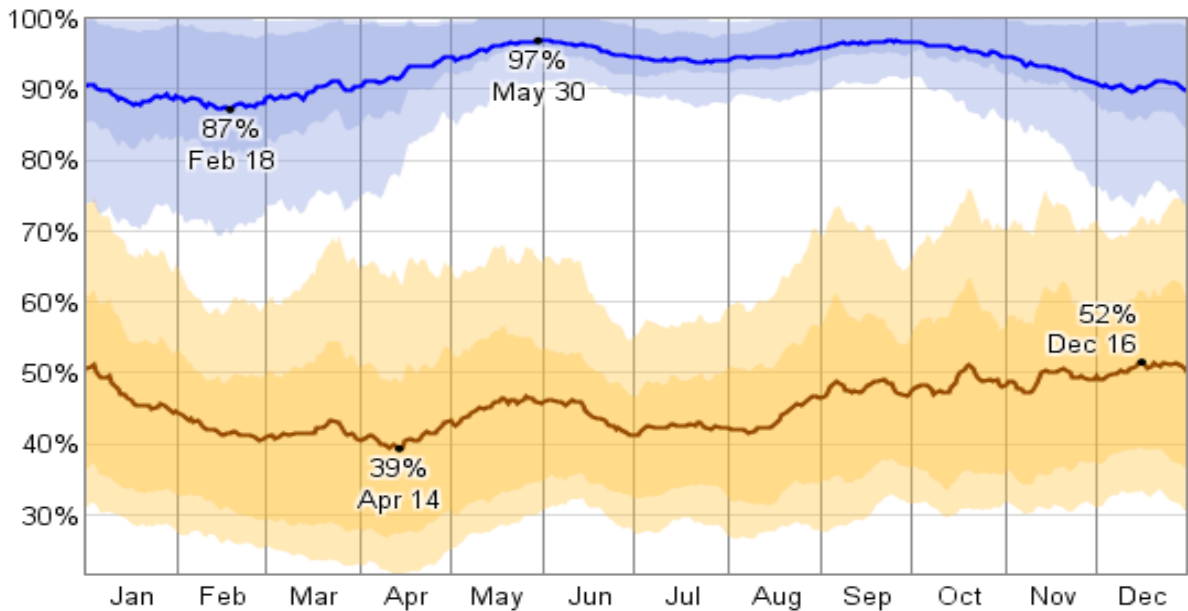
Humidity

The relative humidity typically ranges from 39% (comfortable) to 97% (very humid) over the course of the year, rarely dropping below 22% (dry) and reaching as high as 100% (very humid). The air is *driest* around April 14, at which time the relative humidity drops below 49% (comfortable) three days out of four; it is *most humid* around May 30, exceeding 96% (very humid) three days out of four.

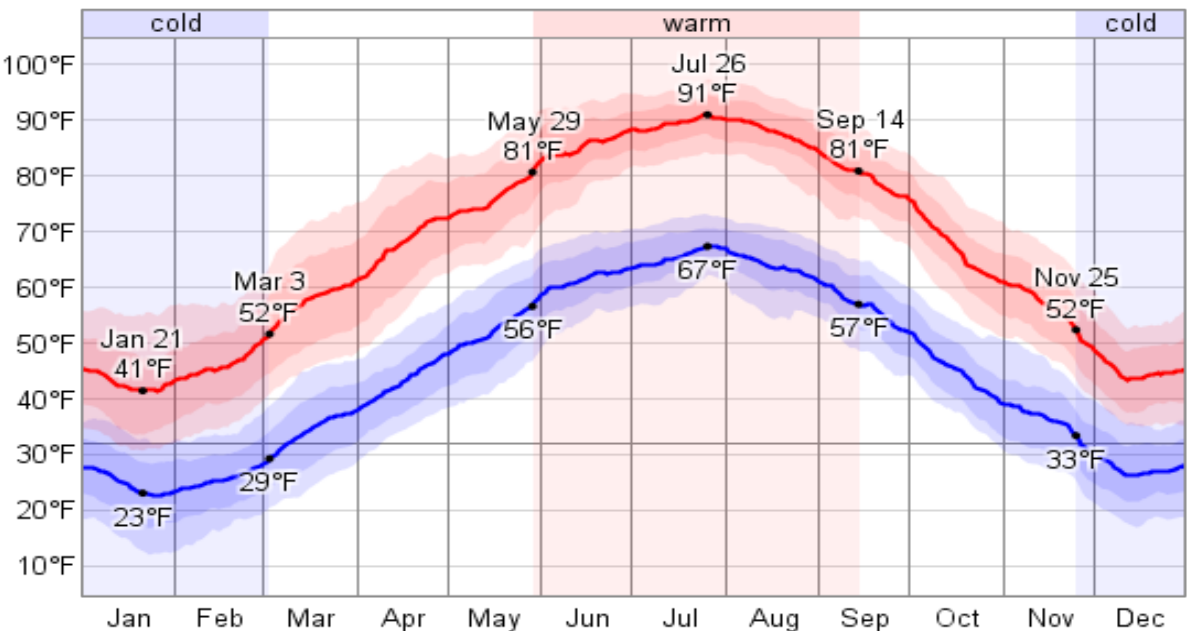
Temperature

Over the course of a year, the temperature typically varies from 23°F to 91°F and is rarely below 12°F or above 97°F.

Relative Humidity



Daily High and Low Temperature



Baltimore

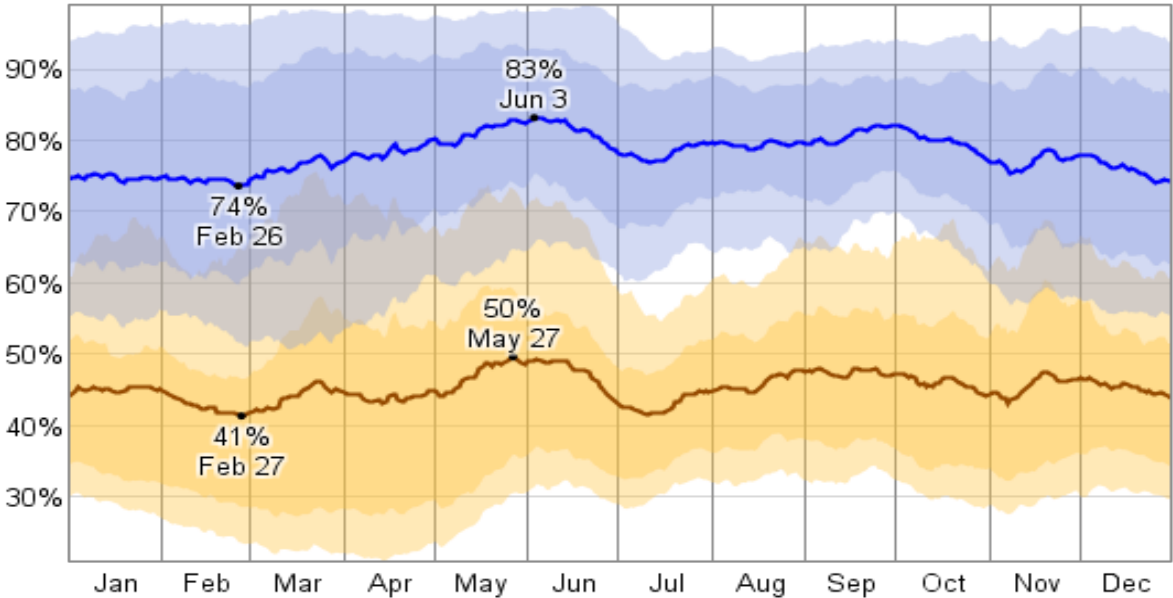
Humidity

The relative humidity typically ranges from 41% (comfortable) to 83% (humid) over the course of the year, rarely dropping below 21% (dry) and reaching as high as 99% (very humid). The air is *driest* around February 27, at which time the relative humidity drops below 47% (comfortable) three days out of four; it is *most humid* around June 3, exceeding 75% (humid) three days out of four.

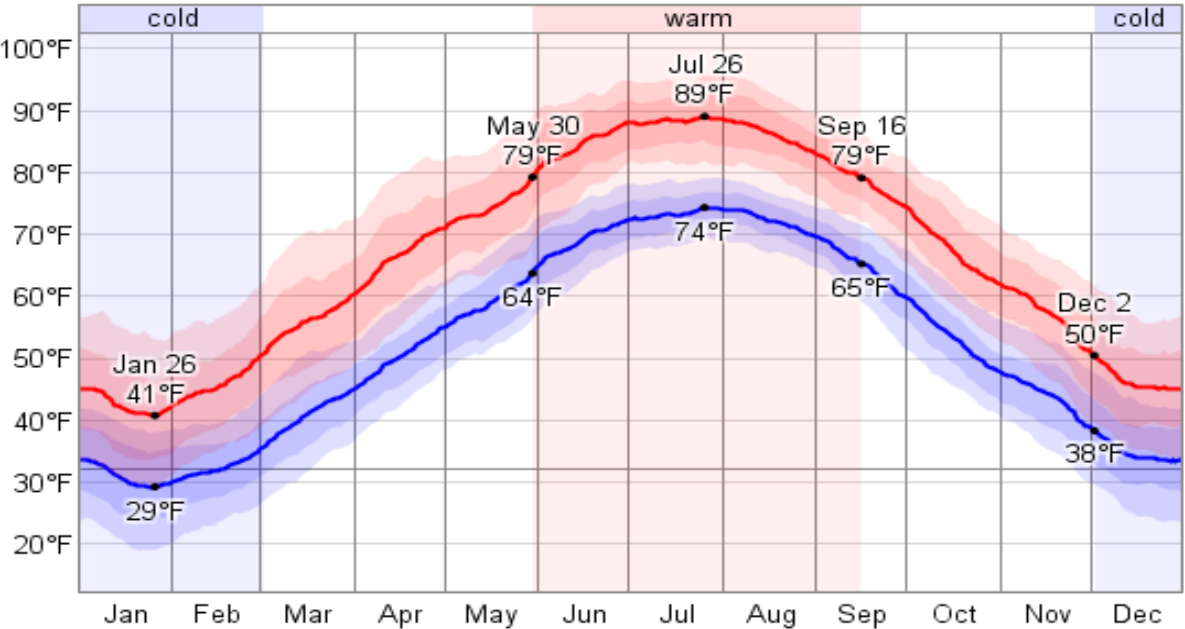
Temperature

Over the course of a year, the temperature typically varies from 29°F to 89°F and is rarely below 19°F or above 96°F.

Relative Humidity



Daily High and Low Temperature



Annapolis

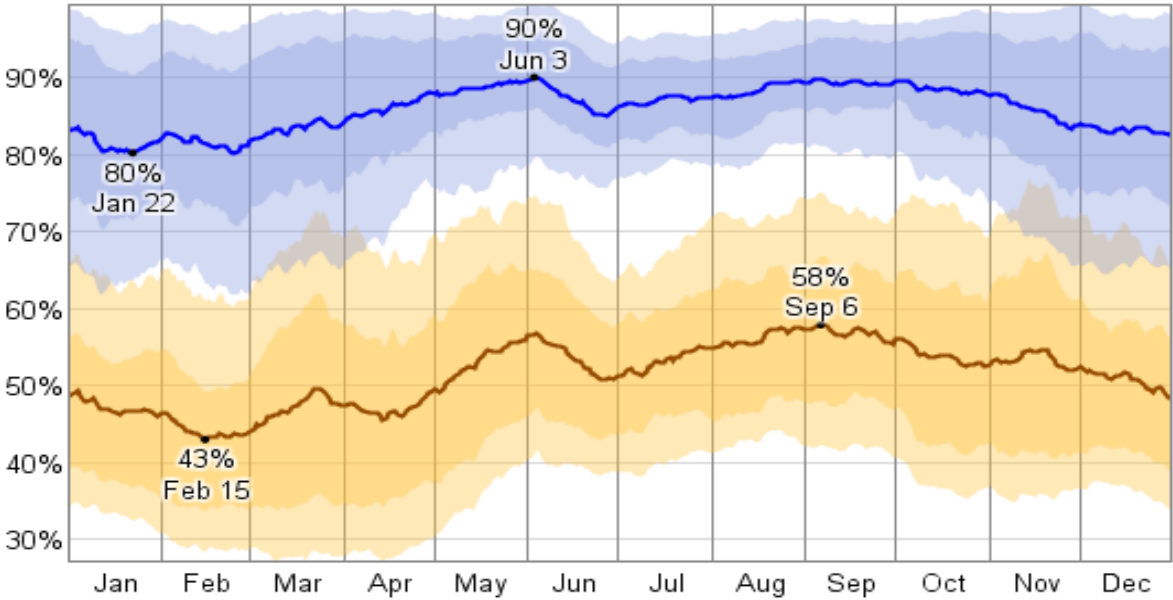
Humidity

The relative humidity typically ranges from 43% (comfortable) to 90% (very humid) over the course of the year, rarely dropping below 27% (dry) and reaching as high as 99% (very humid). The air is *driest* around February 15, at which time the relative humidity drops below 49% (comfortable) three days out of four; it is *most humid* around June 3, exceeding 86% (very humid) three days out of four.

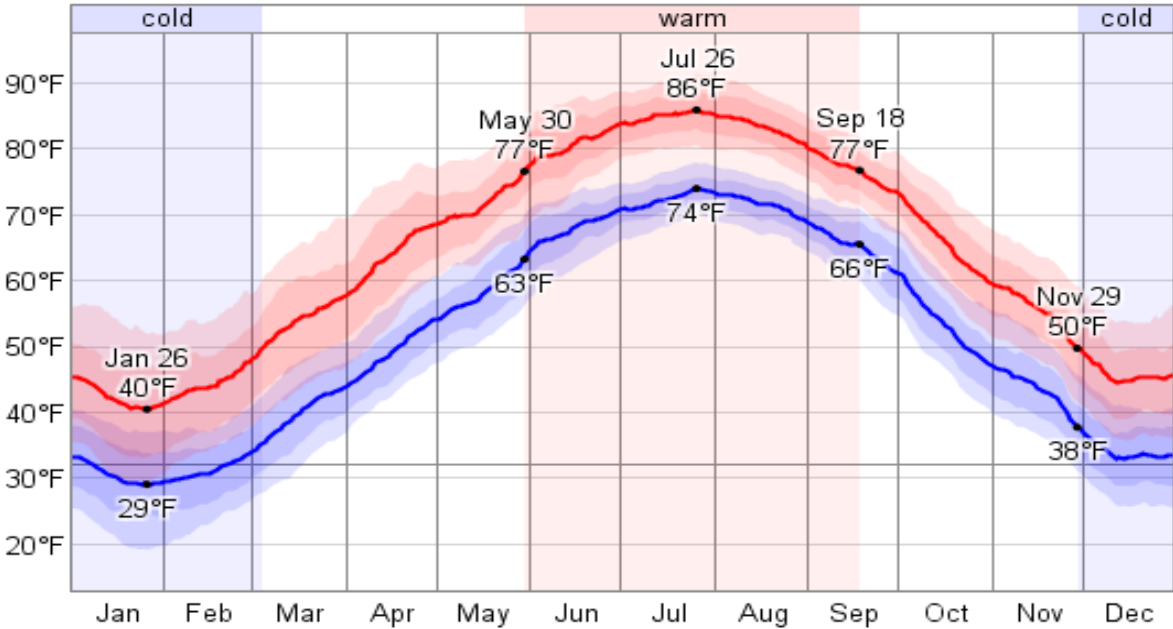
Temperature

Over the course of a year, the temperature typically varies from 29°F to 86°F and is rarely below 19°F or above 91°F.

Relative Humidity



Daily High and Low Temperature



Easton

Humidity

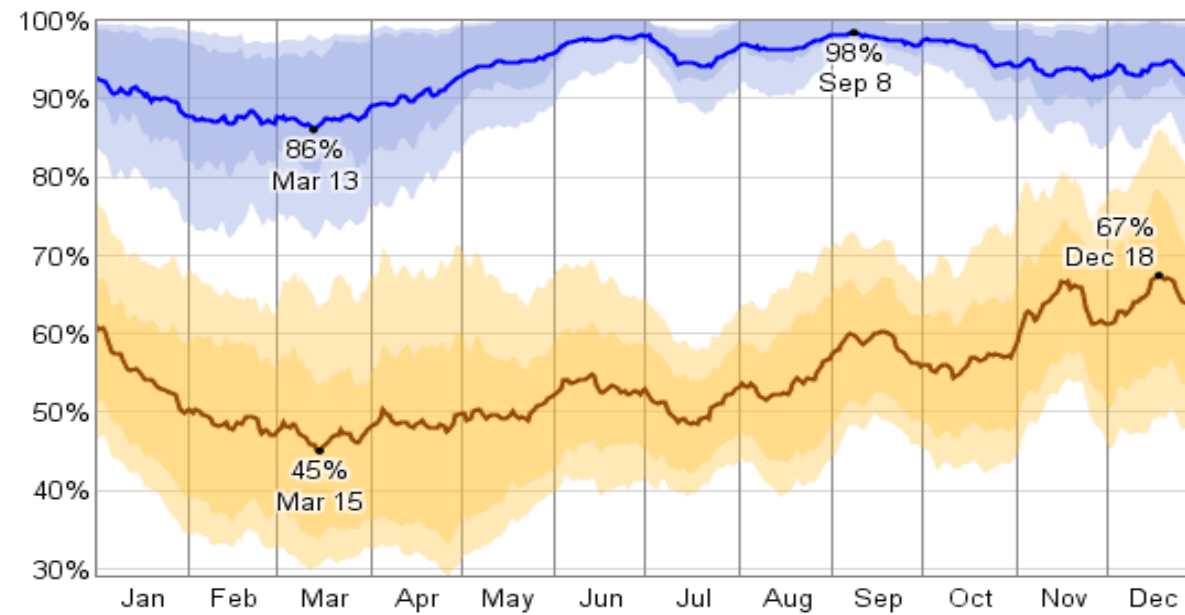
The relative humidity typically ranges from 45% (comfortable) to 98% (very humid) over the course of the year, rarely dropping below 29% (dry) and reaching as high as 100% (very humid).

The air is *driest* around March 15, at which time the relative humidity drops below 53% (mildly humid) three days out of four; it is *most humid* around September 8, exceeding 98% (very humid) three days out of four.

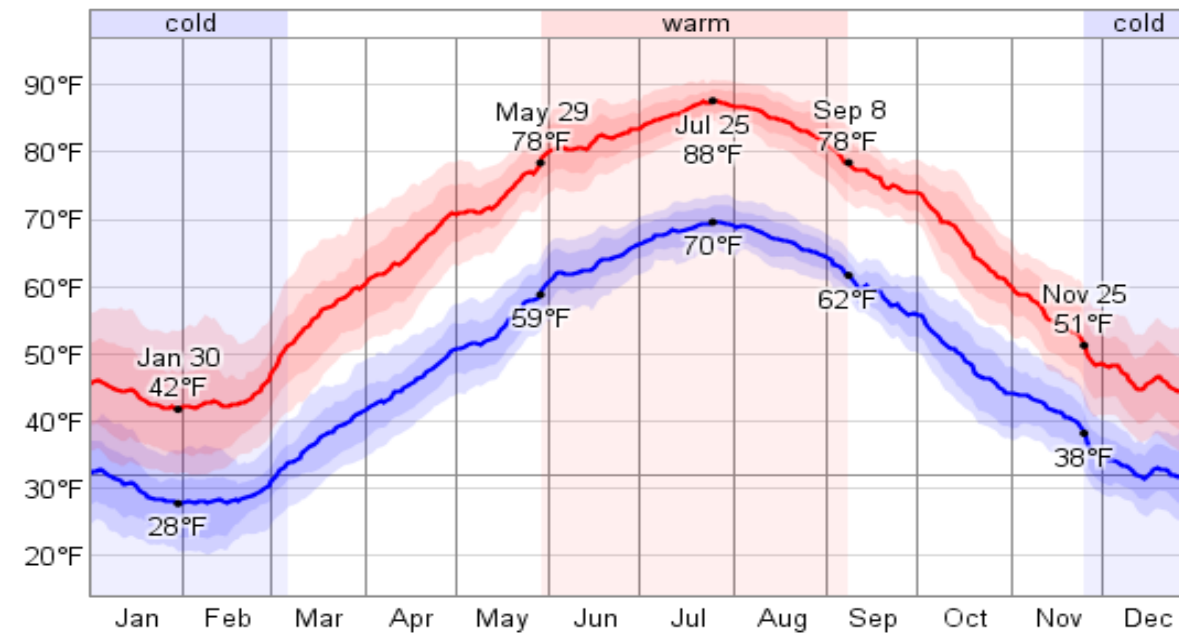
Temperature

Over the course of a year, the temperature typically varies from 28°F to 88°F and is rarely below 20°F or above 91°F.

Relative Humidity



Daily High and Low Temperature



Cambridge

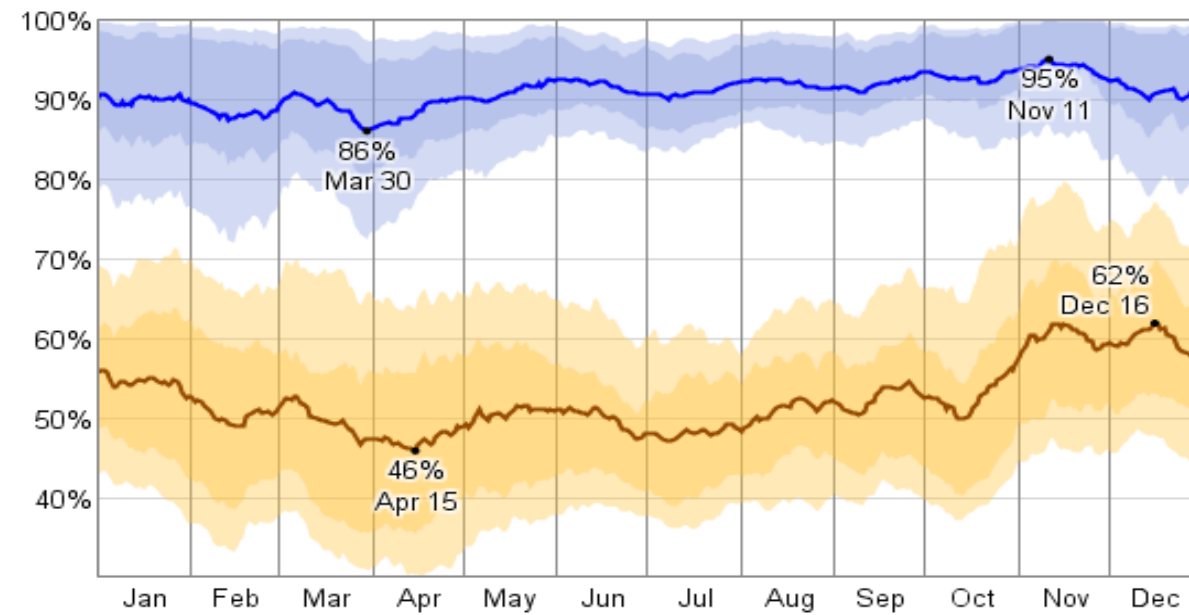
Humidity

The relative humidity typically ranges from 46% (comfortable) to 95% (very humid) over the course of the year, rarely dropping below 30% (comfortable) and reaching as high as 100% (very humid). The air is *driest* around April 15, at which time the relative humidity drops below 56% (mildly humid) three days out of four; it is *most humid* around November 11, exceeding 94% (very humid) three days out of four.

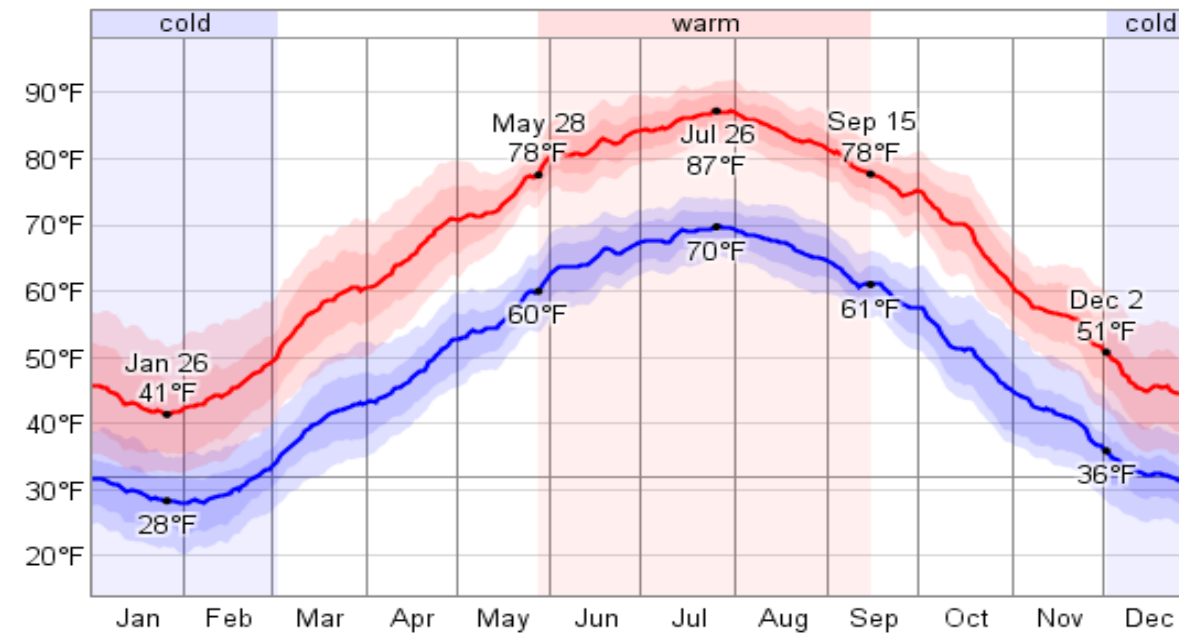
Temperature

Over the course of a year, the temperature typically varies from 28°F to 87°F and is rarely below 20°F or above 92°F.

Relative Humidity



Daily High and Low Temperature



Salisbury

Humidity

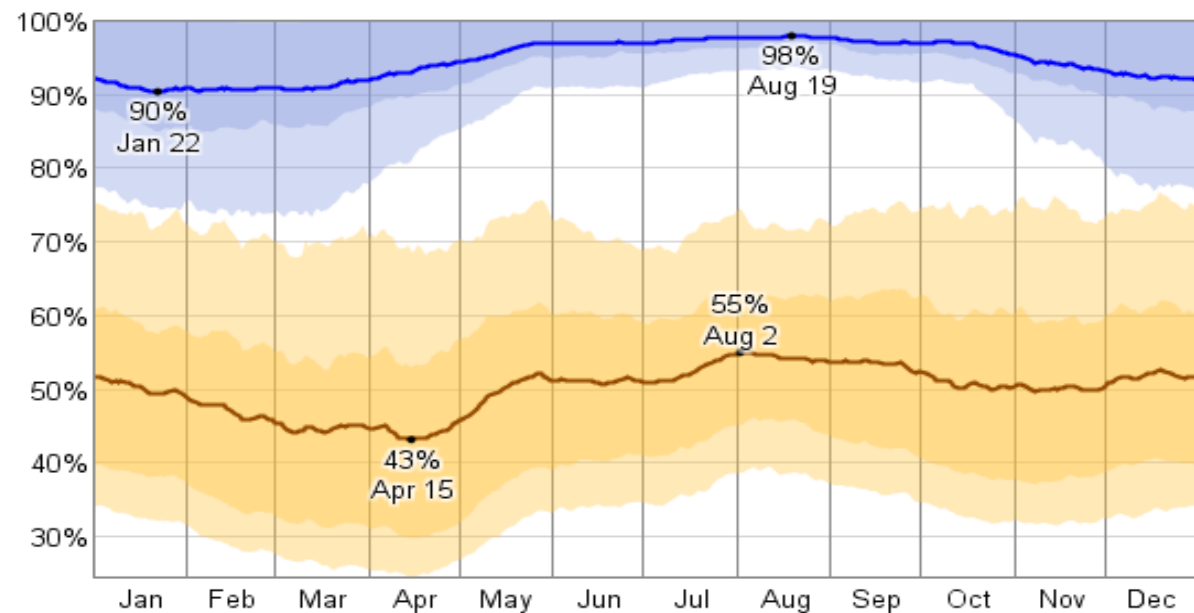
The relative humidity typically ranges from 43% (comfortable) to 98% (very humid) over the course of the year, rarely dropping below 25% (dry) and reaching as high as 100% (very humid).

The air is *driest* around April 15, at which time the relative humidity drops below 53% (mildly humid) three days out of four; it is *most humid* around August 19, exceeding 97% (very humid) three days out of four.

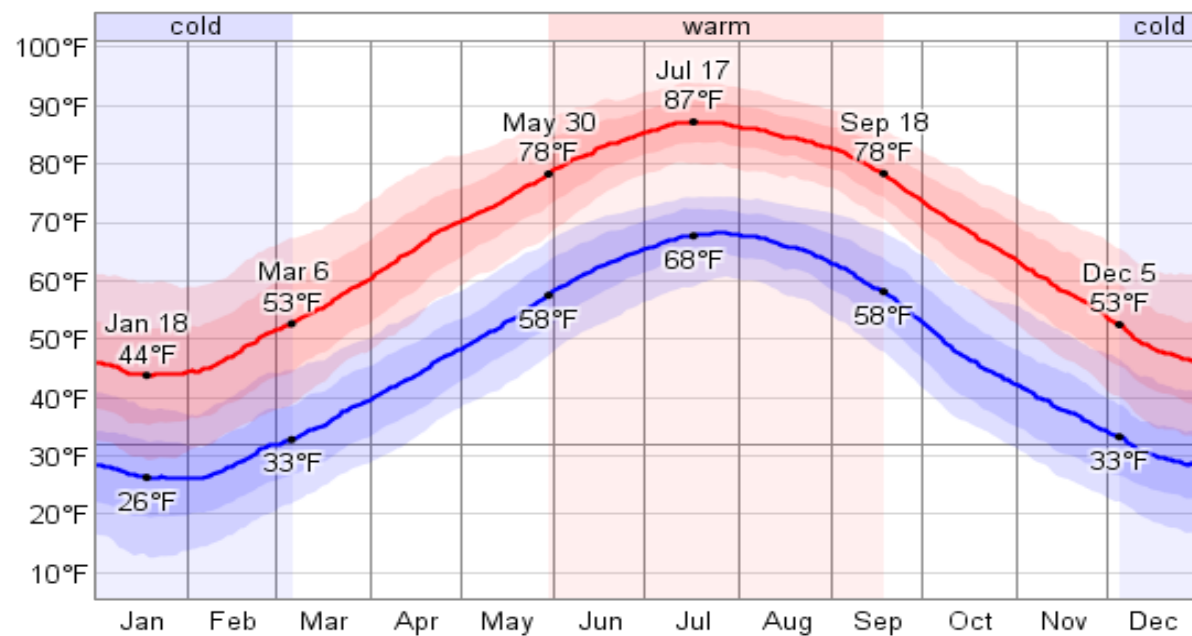
Temperature

Over the course of a year, the temperature typically varies from 26°F to 87°F and is rarely below 13°F or above 94°F.

Relative Humidity



Daily High and Low Temperature



Ocean City

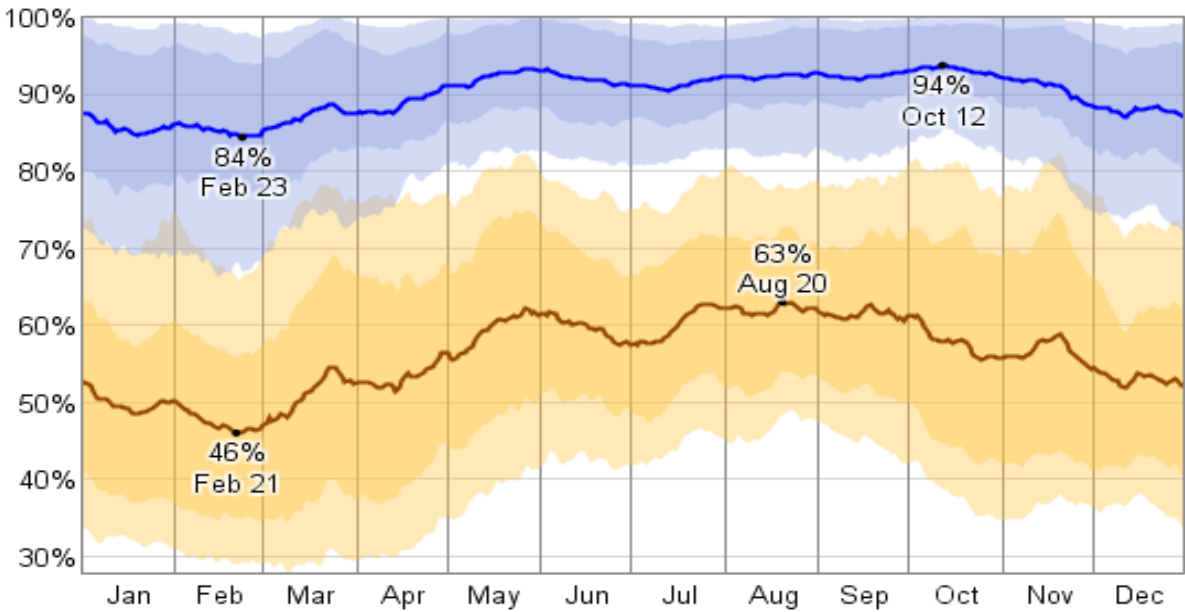
Humidity

The relative humidity typically ranges from 46% (comfortable) to 94% (very humid) over the course of the year, rarely dropping below 28% (dry) and reaching as high as 100% (very humid). The air is *driest* around February 21, at which time the relative humidity drops below 56% (mildly humid) three days out of four; it is *most humid* around October 12, exceeding 92% (very humid) three days out of four.

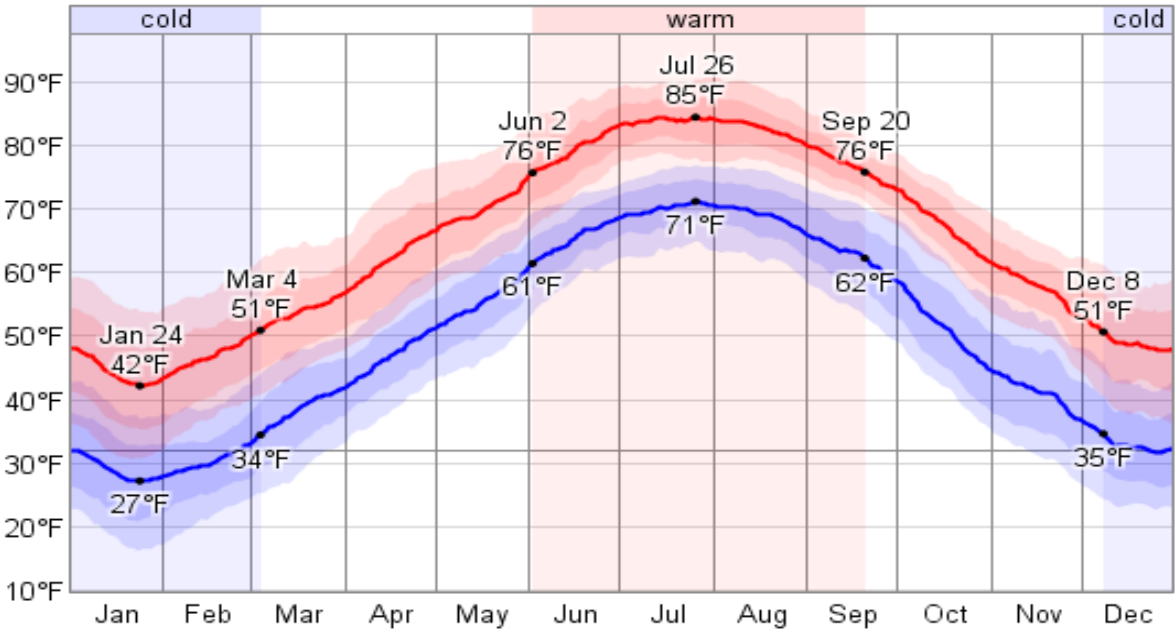
Temperature

Over the course of a year, the temperature typically varies from 27°F to 85°F and is rarely below 16°F or above 91°F.

Relative Humidity



Daily High and Low Temperature



Camp Springs

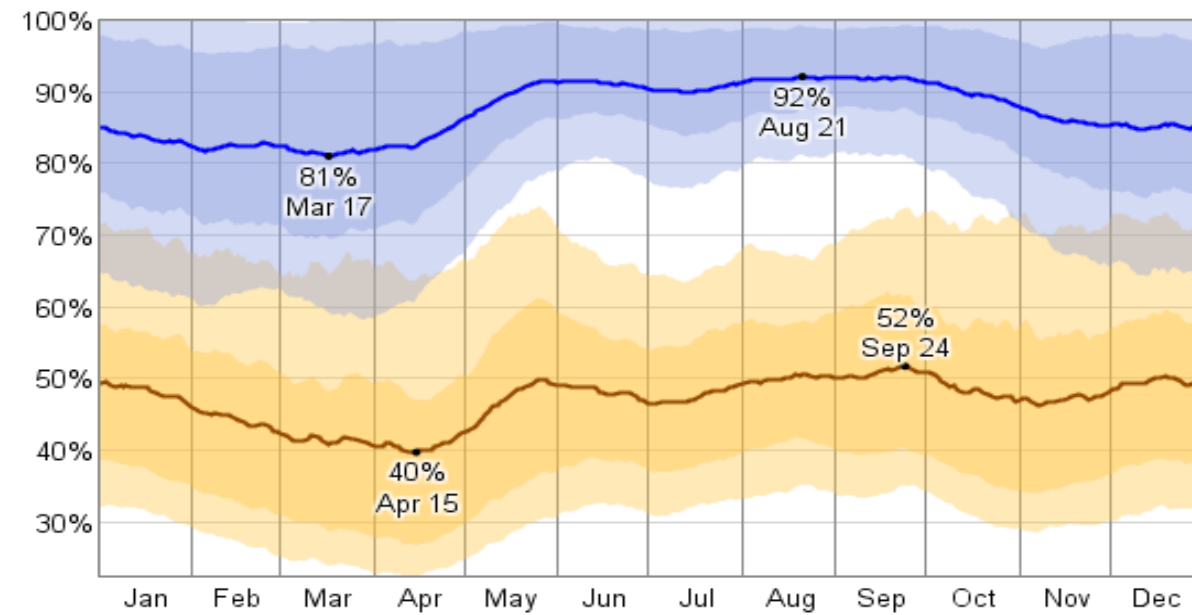
Humidity

The relative humidity typically ranges from 40% (comfortable) to 92% (very humid) over the course of the year, rarely dropping below 22% (dry) and reaching as high as 100% (very humid). The air is *driest* around April 15, at which time the relative humidity drops below 47% (comfortable) three days out of four; it is *most humid* around August 21, exceeding 88% (very humid) three days out of four.

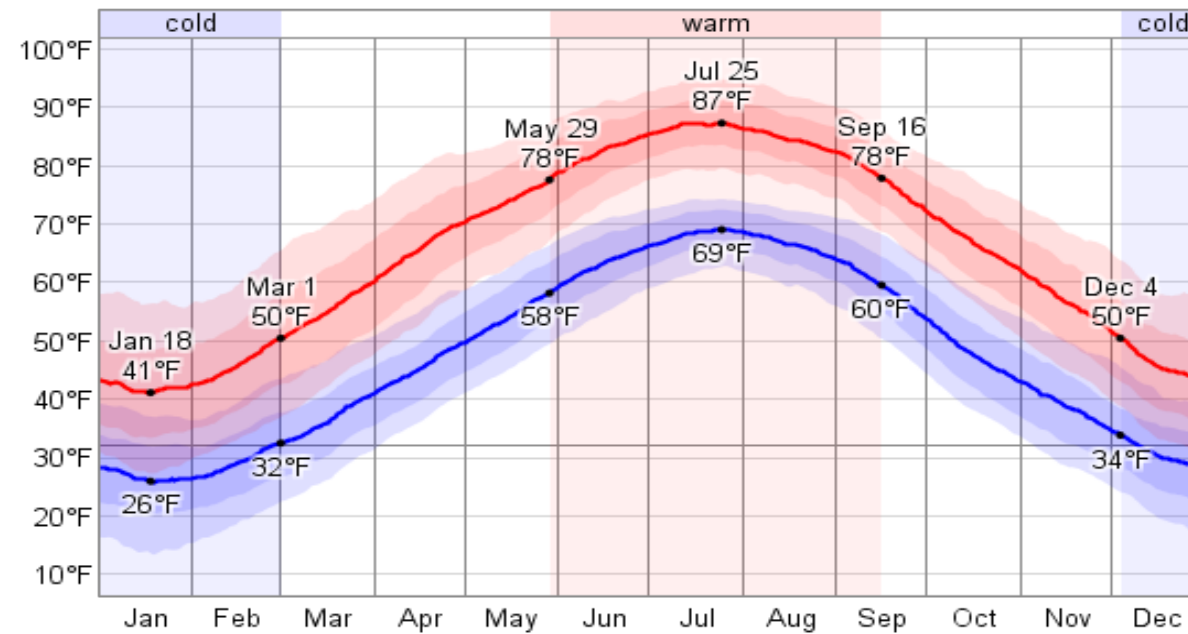
Temperature

Over the course of a year, the temperature typically varies from 26°F to 87°F and is rarely below 13°F or above 95°F.

Relative Humidity



Daily High and Low Temperature



Cumberland

Humidity

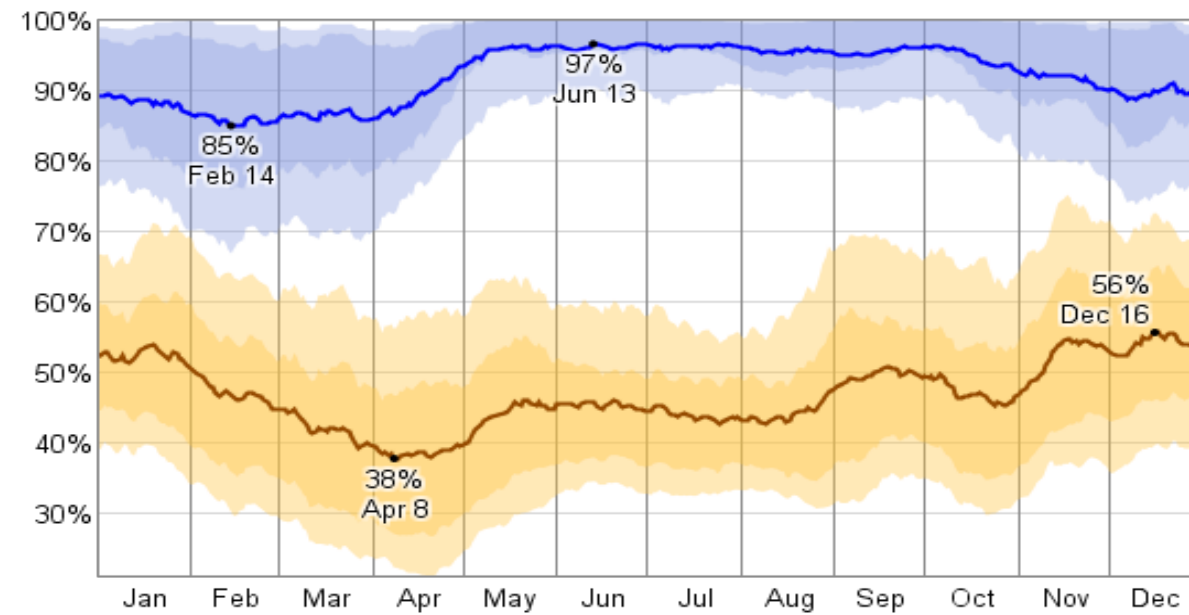
The relative humidity typically ranges from 38% (comfortable) to 97% (very humid) over the course of the year, rarely dropping below 21% (dry) and reaching as high as 100% (very humid).

The air is *driest* around April 8, at which time the relative humidity drops below 47% (comfortable) three days out of four; it is *most humid* around June 13, exceeding 96% (very humid) three days out of four.

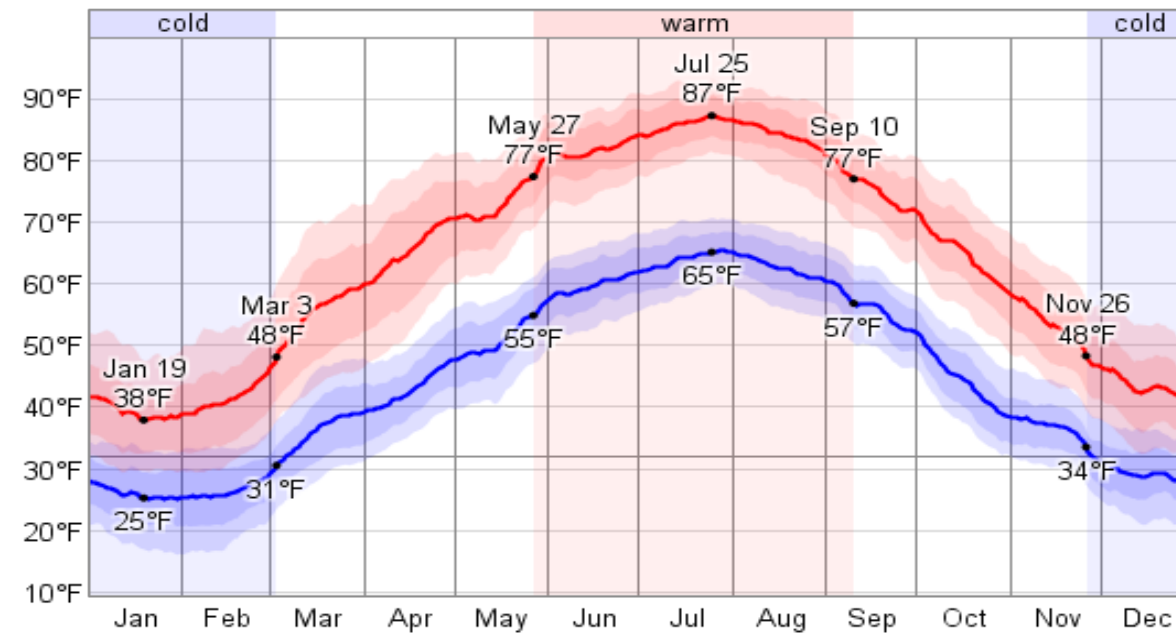
Temperature

Over the course of a year, the temperature typically varies from 25°F to 87°F and is rarely below 16°F or above 93°F.

Relative Humidity



Daily High and Low Temperature



Patuxent River

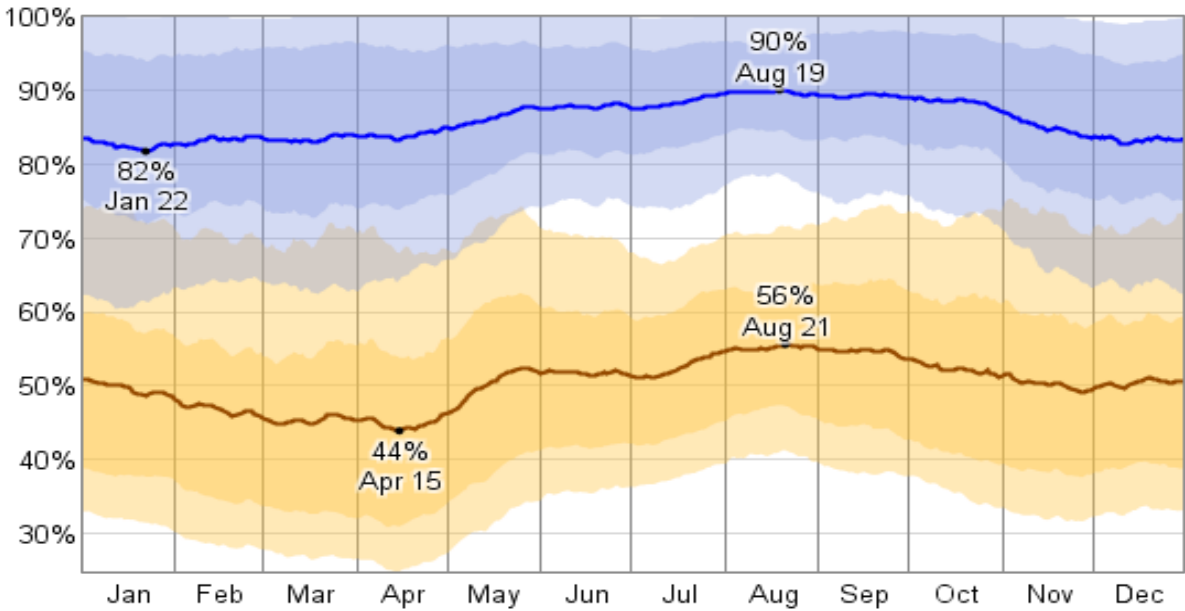
Humidity

The relative humidity typically ranges from 44% (comfortable) to 90% (very humid) over the course of the year, rarely dropping below 25% (dry) and reaching as high as 100% (very humid). The air is *driest* around April 15, at which time the relative humidity drops below 54% (mildly humid) three days out of four; it is *most humid* around August 19, exceeding 85% (humid) three days out of four.

Temperature

Over the course of a year, the temperature typically varies from 29°F to 87°F and is rarely below 17°F or above 93°F.

Relative Humidity



Daily High and Low Temperature

