

Boise

Humidity

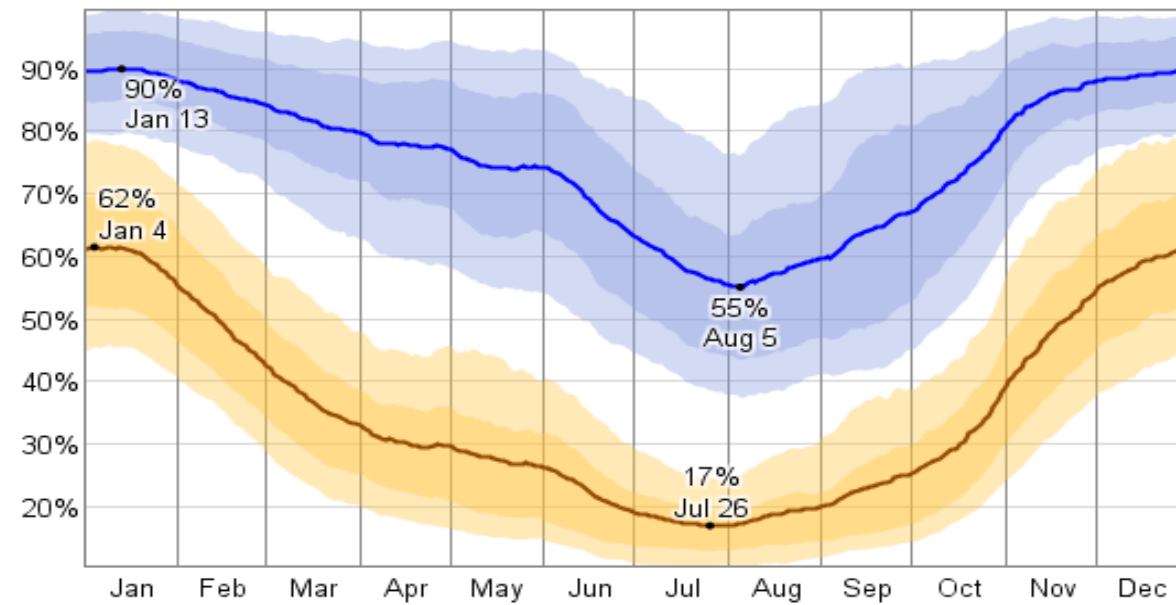
The relative humidity typically ranges from 17% (dry) to 90% (very humid) over the course of the year, rarely dropping below 11% (very dry) and reaching as high as 99% (very humid).

The air is *driest* around July 26, at which time the relative humidity drops below 20% (dry) three days out of four; it is *most humid* around January 13, exceeding 85% (very humid) three days out of four.

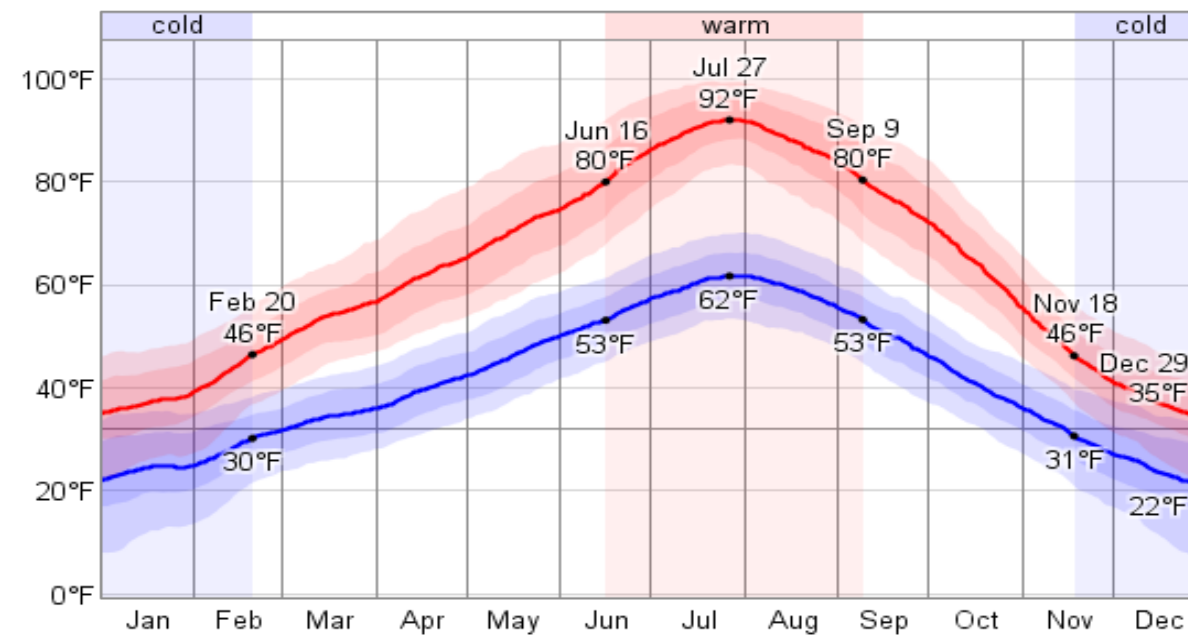
Temperature

Over the course of a year, the temperature typically varies from 22°F to 92°F and is rarely below 7°F or above 100°F.

Relative Humidity



Daily High and Low Temperature



Coeur d'Alene

Humidity

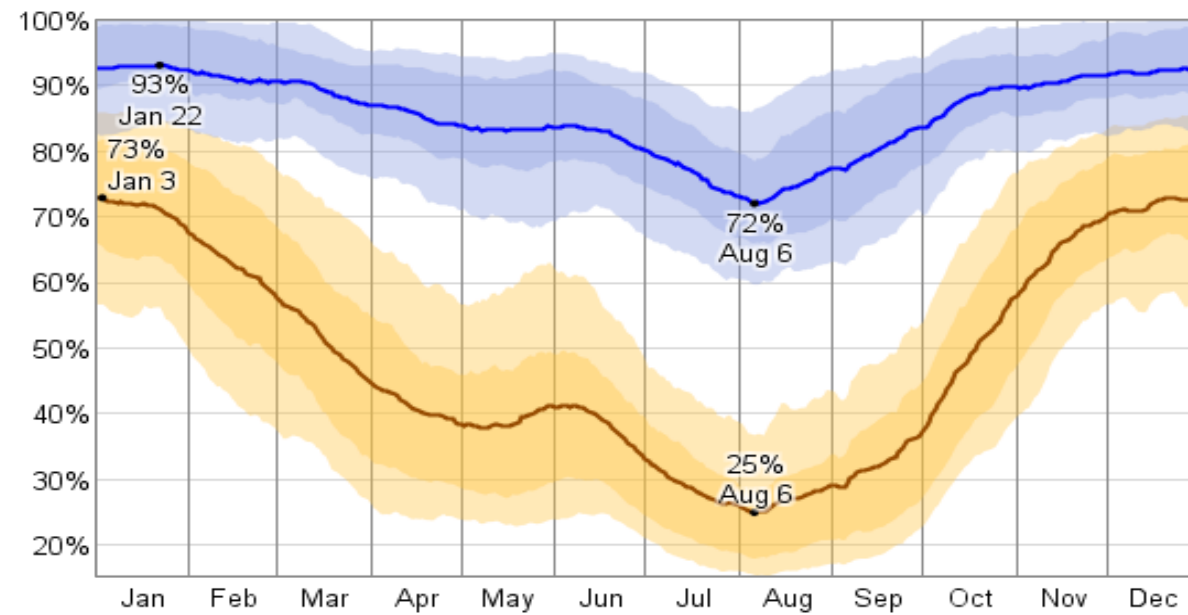
The relative humidity typically ranges from 25% (dry) to 93% (very humid) over the course of the year, rarely dropping below 15% (dry) and reaching as high as 100% (very humid).

The air is *driest* around August 6, at which time the relative humidity drops below 28% (dry) three days out of four; it is *most humid* around January 22, exceeding 91% (very humid) three days out of four.

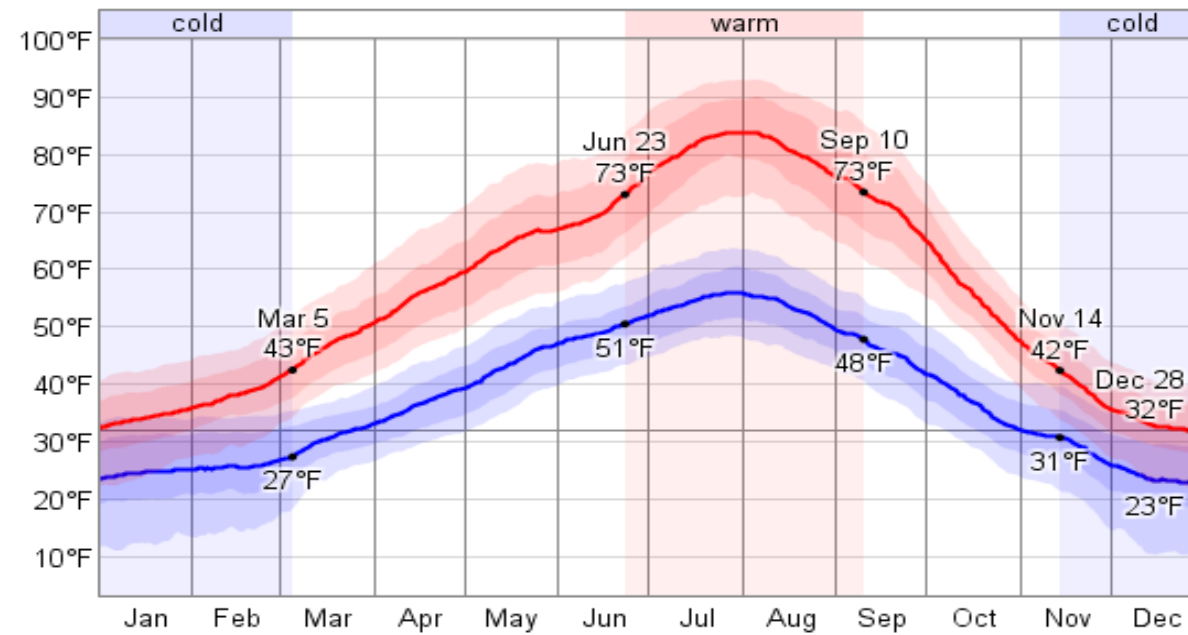
Temperature

Over the course of a year, the temperature typically varies from 23°F to 84°F and is rarely below 10°F or above 93°F.

Relative Humidity



Daily High and Low Temperature



Mountain Home

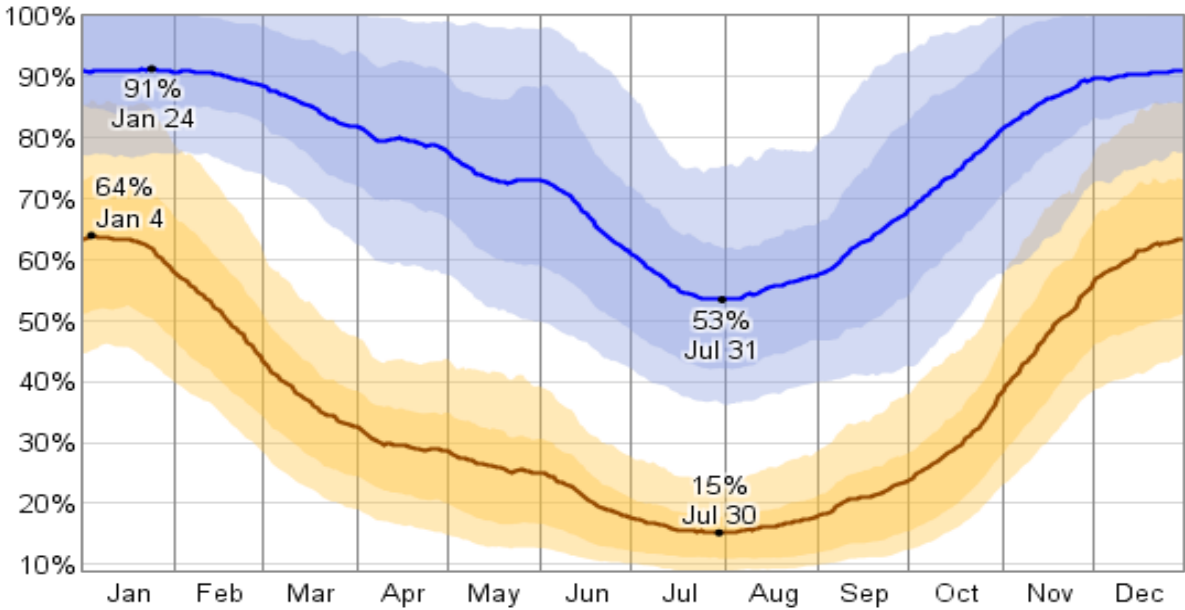
Humidity

The relative humidity typically ranges from 15% (dry) to 91% (very humid) over the course of the year, rarely dropping below 9% (very dry) and reaching as high as 100% (very humid). The air is *driest* around July 30, at which time the relative humidity drops below 18% (dry) three days out of four; it is *most humid* around January 24, exceeding 85% (humid) three days out of four.

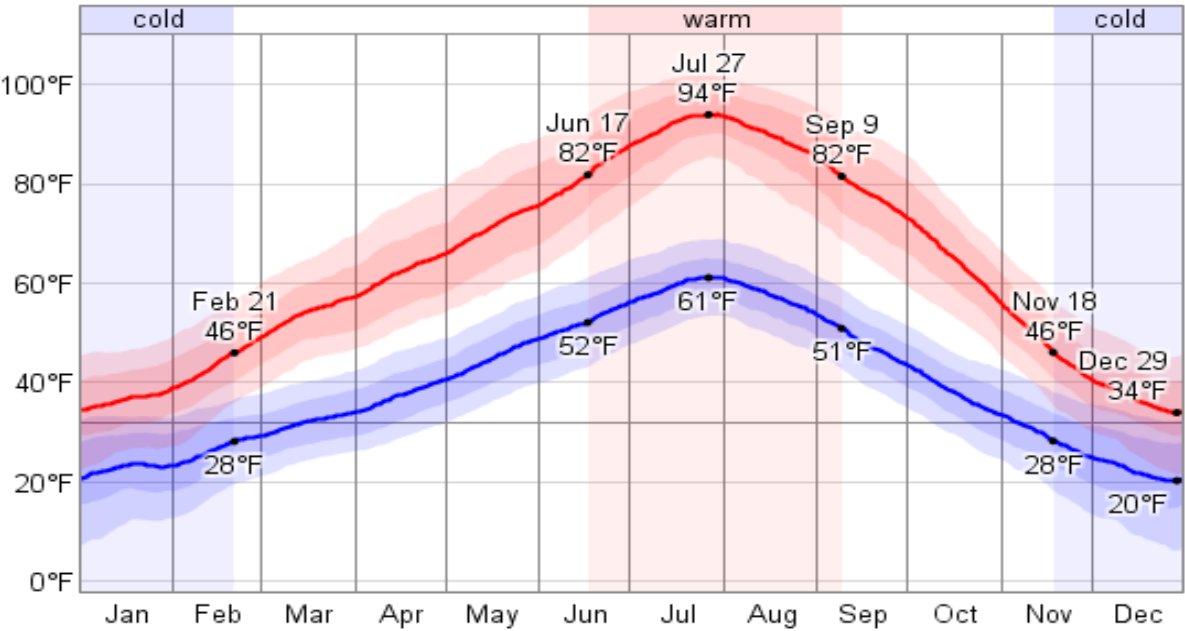
Temperature

Over the course of a year, the temperature typically varies from 20°F to 94°F and is rarely below 6°F or above 102°F.

Relative Humidity



Daily High and Low Temperature



Twin Falls

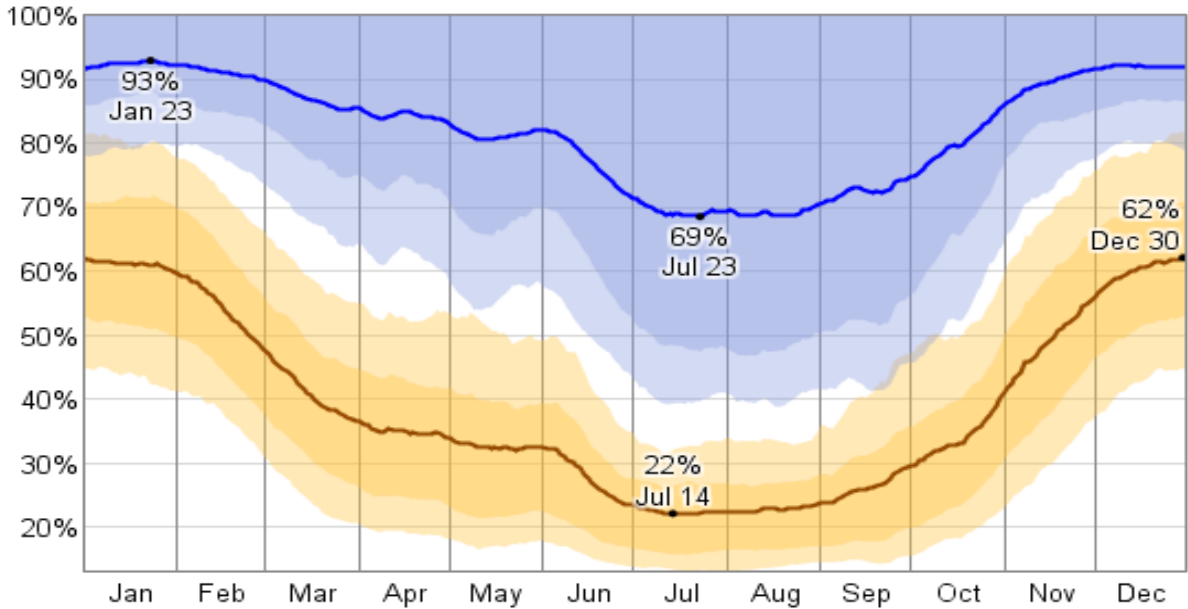
Humidity

The relative humidity typically ranges from 22% (dry) to 93% (very humid) over the course of the year, rarely dropping below 13% (very dry) and reaching as high as 100% (very humid). The air is *driest* around July 14, at which time the relative humidity drops below 26% (dry) three days out of four; it is *most humid* around January 23, exceeding 88% (very humid) three days out of four.

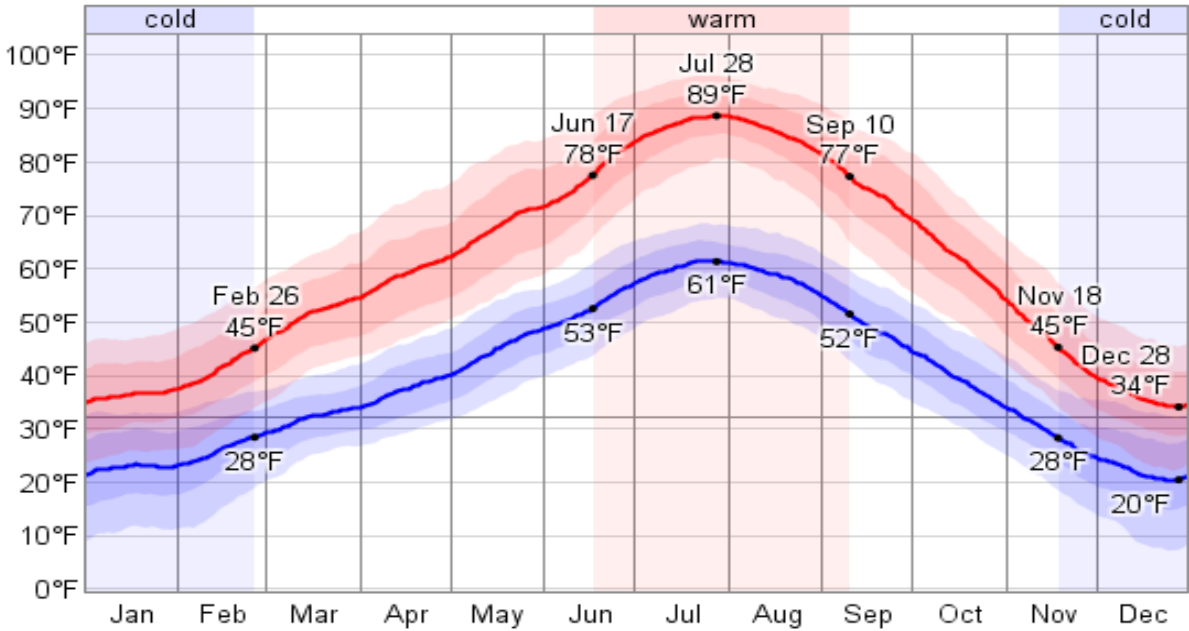
Temperature

Over the course of a year, the temperature typically varies from 20°F to 89°F and is rarely below 7°F or above 96°F.

Relative Humidity



Daily High and Low Temperature



Pocatello

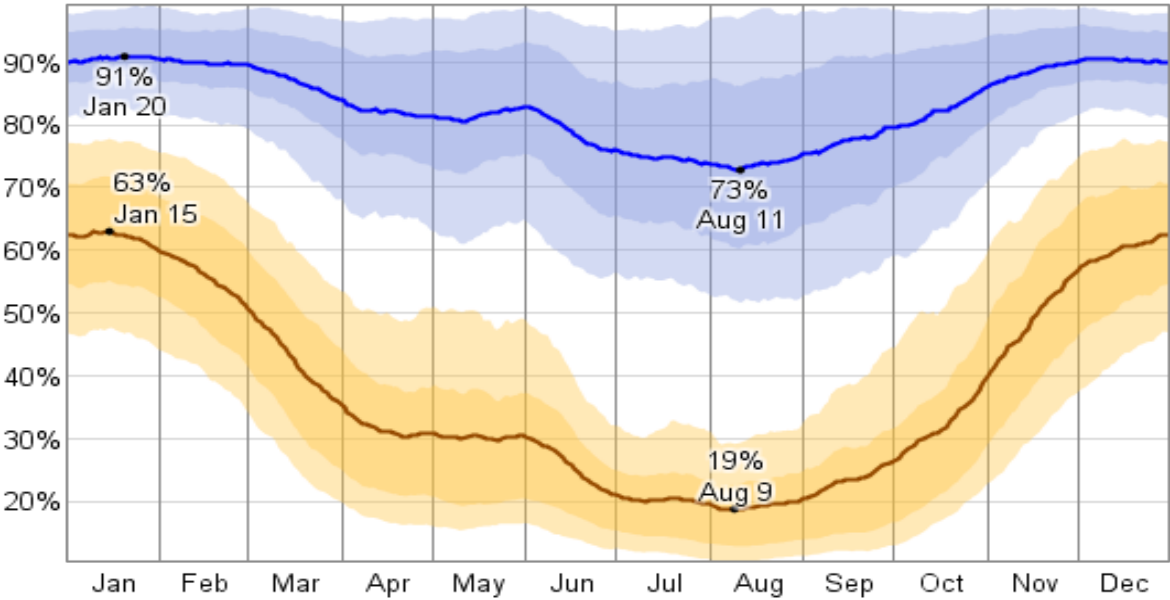
Humidity

The relative humidity typically ranges from 19% (dry) to 91% (very humid) over the course of the year, rarely dropping below 10% (very dry) and reaching as high as 99% (very humid). The air is *driest* around August 9, at which time the relative humidity drops below 23% (dry) three days out of four; it is *most humid* around January 20, exceeding 88% (very humid) three days out of four.

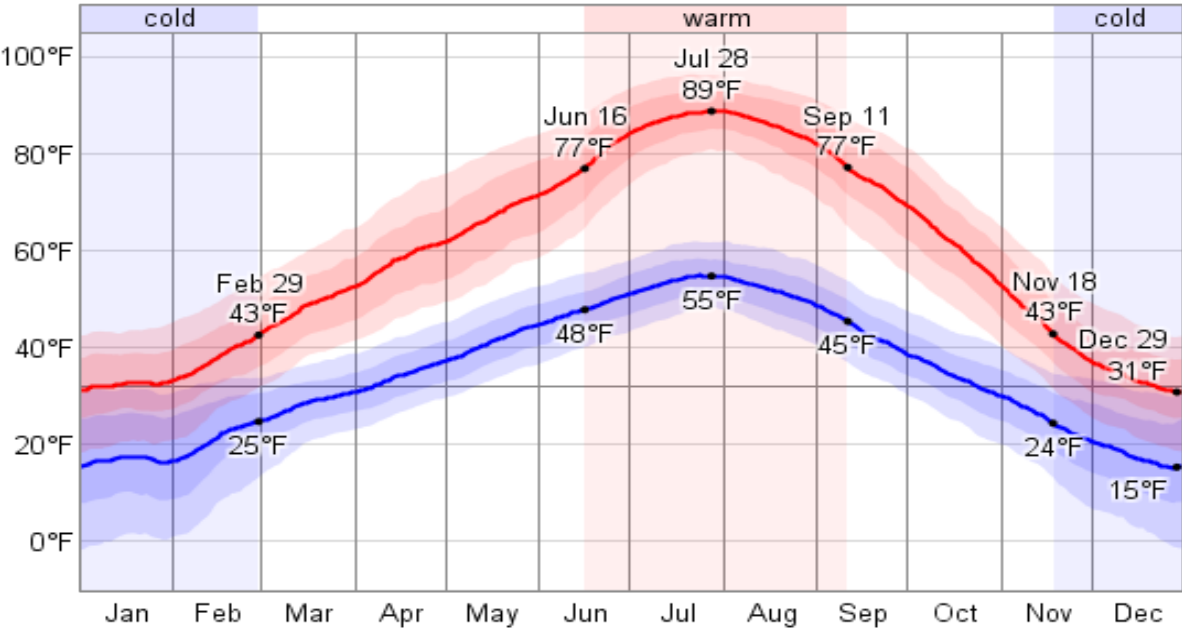
Temperature

Over the course of a year, the temperature typically varies from 15°F to 89°F and is rarely below -2°F or above 96°F.

Relative Humidity



Daily High and Low Temperature



Idaho Falls

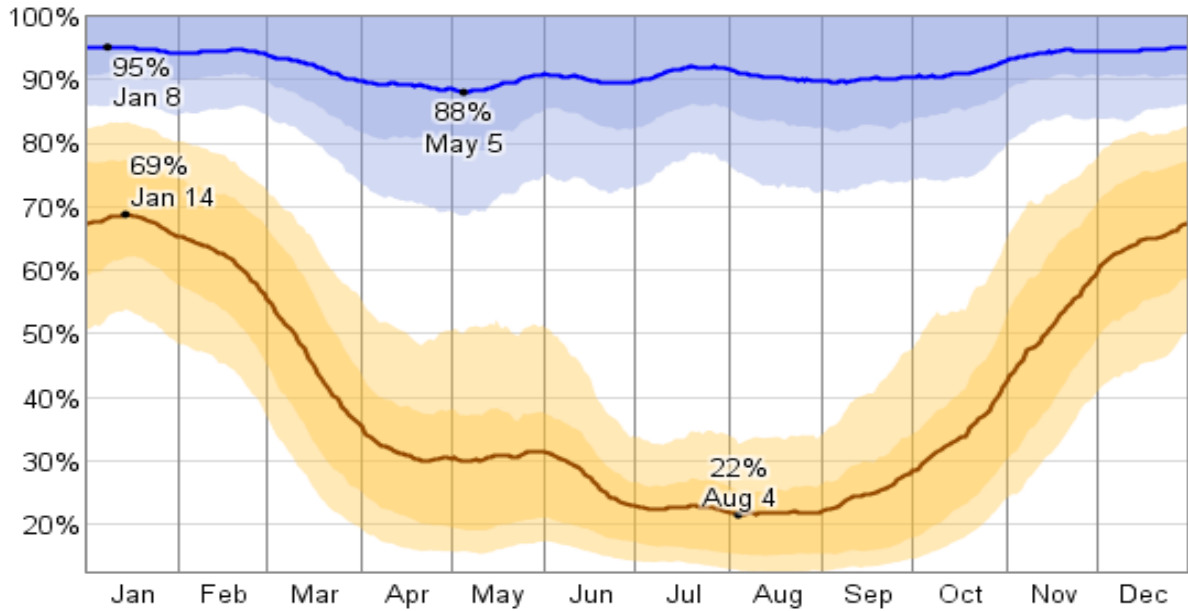
Humidity

The relative humidity typically ranges from 22% (dry) to 95% (very humid) over the course of the year, rarely dropping below 13% (very dry) and reaching as high as 100% (very humid). The air is *driest* around August 4, at which time the relative humidity drops below 25% (dry) three days out of four; it is *most humid* around January 8, exceeding 91% (very humid) three days out of four.

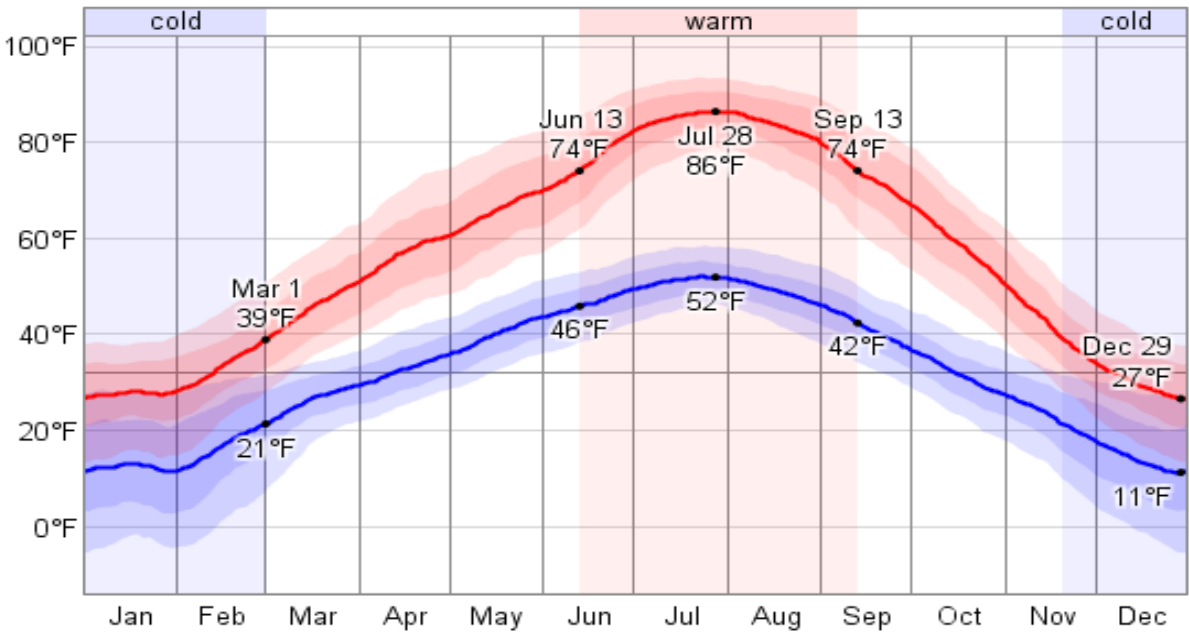
Temperature

Over the course of a year, the temperature typically varies from 11°F to 86°F and is rarely below -5°F or above 94°F.

Relative Humidity



Daily High and Low Temperature



Rexburg

Humidity

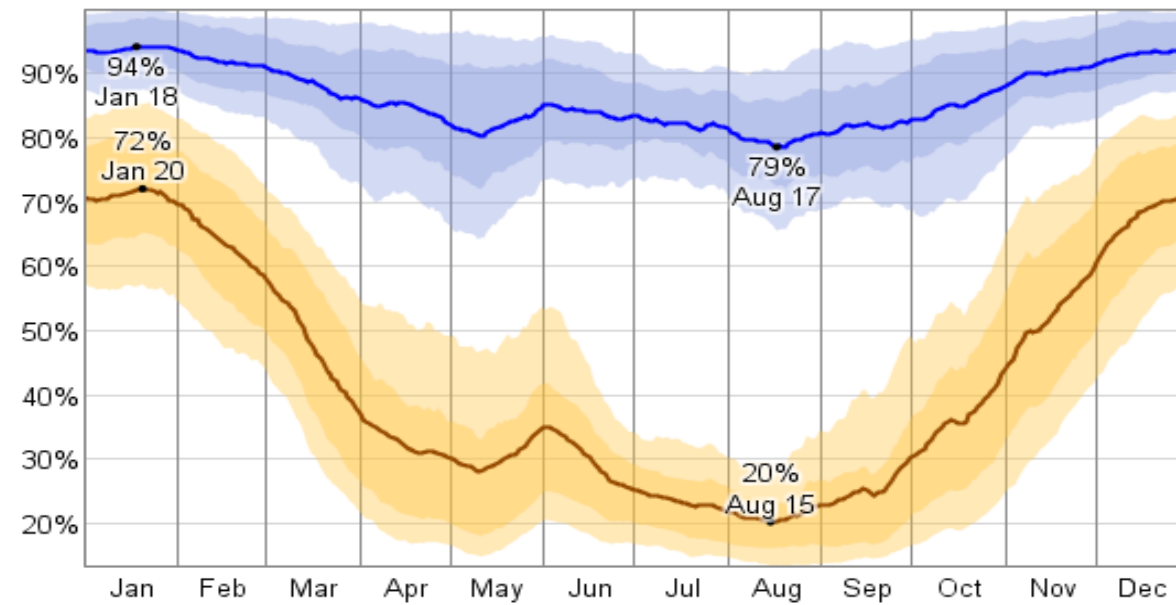
The relative humidity typically ranges from 20% (dry) to 94% (very humid) over the course of the year, rarely dropping below 13% (very dry) and reaching as high as 100% (very humid).

The air is *driest* around August 15, at which time the relative humidity drops below 23% (dry) three days out of four; it is *most humid* around January 18, exceeding 91% (very humid) three days out of four.

Temperature

Over the course of a year, the temperature typically varies from 11°F to 86°F and is rarely below -3°F or above 93°F.

Relative Humidity



Daily High and Low Temperature

