

## Windsor Locks

### Humidity

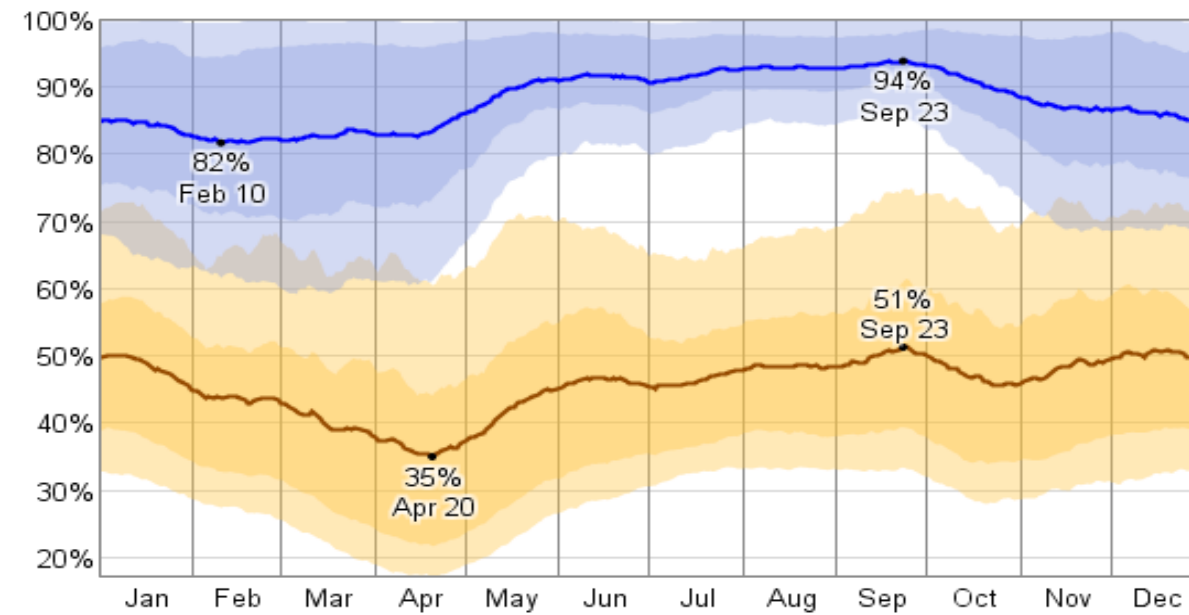
The relative humidity typically ranges from 35% (comfortable) to 94% (very humid) over the course of the year, rarely dropping below 17% (dry) and reaching as high as 100% (very humid).

The air is *driest* around April 20, at which time the relative humidity drops below 44% (comfortable) three days out of four; it is *most humid* around September 23, exceeding 91% (very humid) three days out of four.

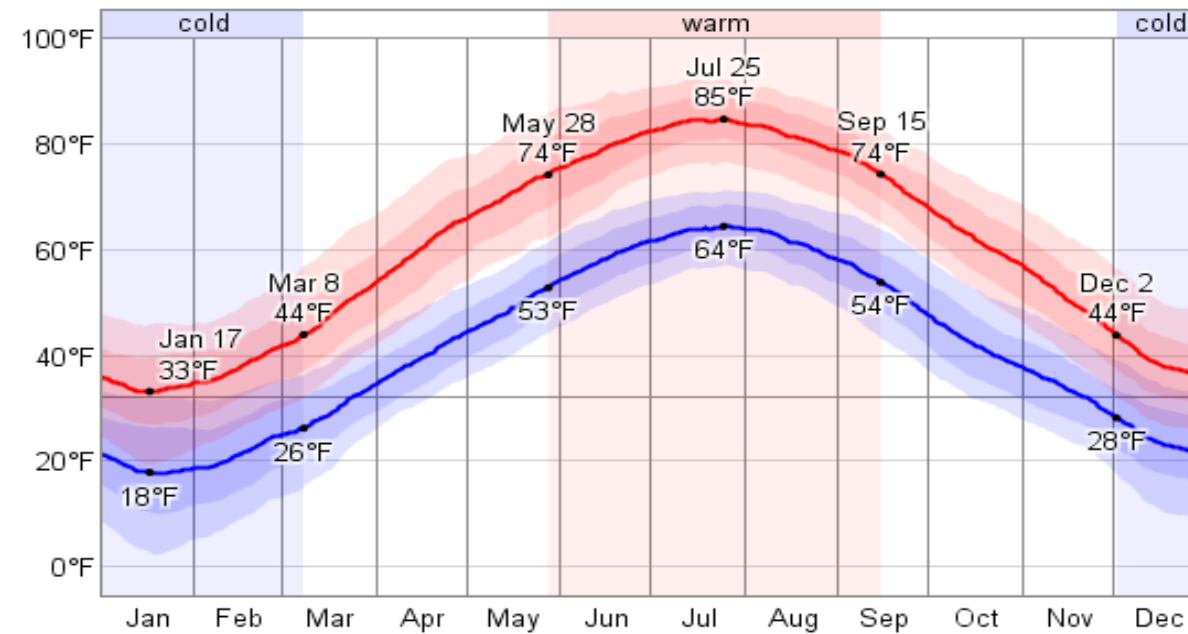
### Temperature

Over the course of a year, the temperature typically varies from 18°F to 85°F and is rarely below 2°F or above 92°F.

Relative Humidity



Daily High and Low Temperature



# Hartford

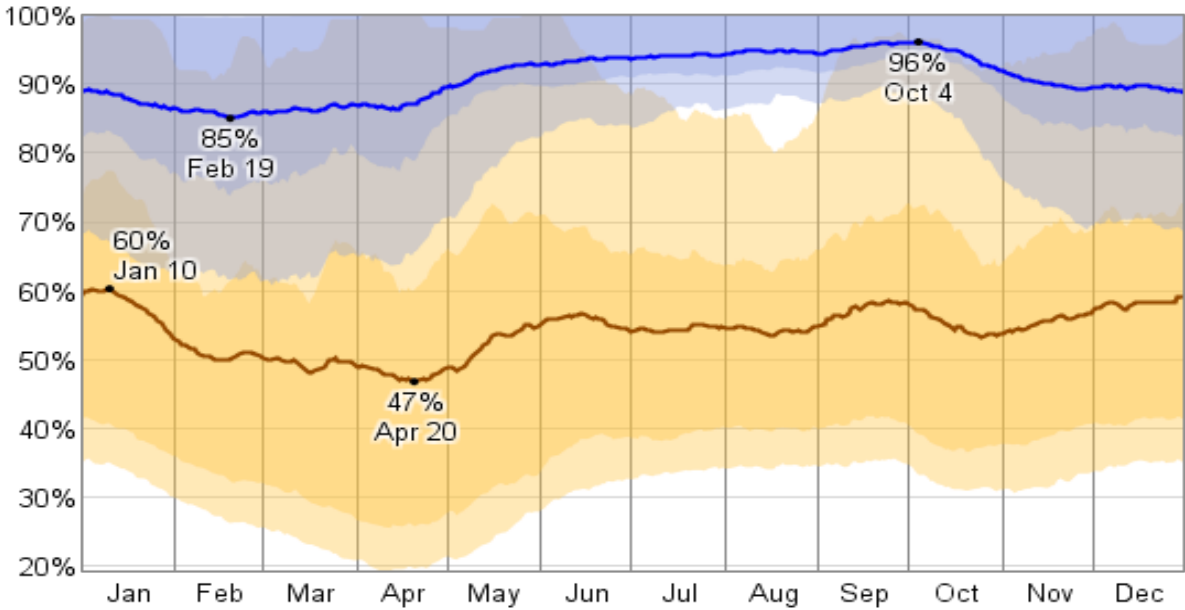
## Humidity

The relative humidity typically ranges from 47% (comfortable) to 96% (very humid) over the course of the year, rarely dropping below 19% (dry) and reaching as high as 100% (very humid). The air is *driest* around April 20, at which time the relative humidity drops below 60% (mildly humid) three days out of four; it is *most humid* around October 4, exceeding 94% (very humid) three days out of four.

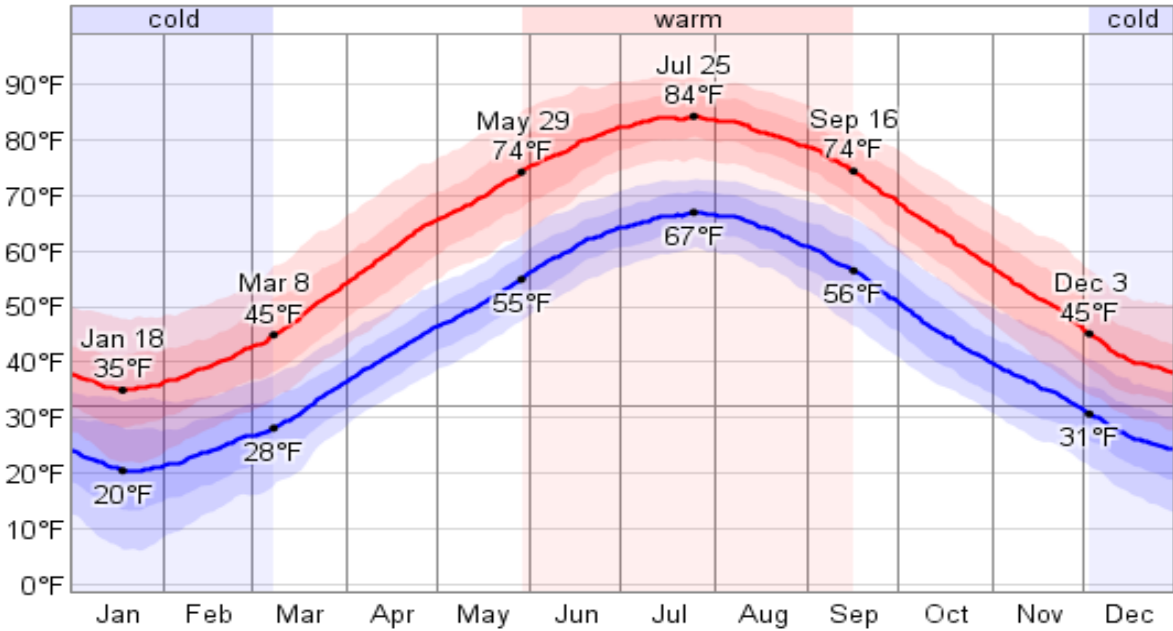
## Temperature

Over the course of a year, the temperature typically varies from 20°F to 84°F and is rarely below 6°F or above 92°F

Relative Humidity



Daily High and Low Temperature



## New London

### Humidity

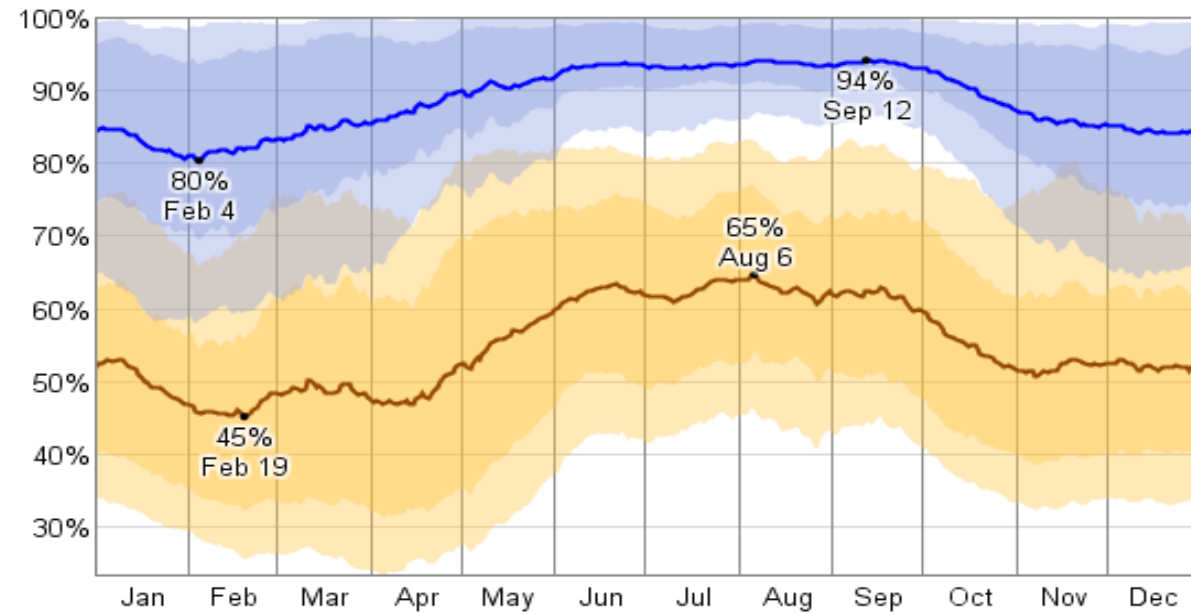
The relative humidity typically ranges from 45% (comfortable) to 94% (very humid) over the course of the year, rarely dropping below 23% (dry) and reaching as high as 100% (very humid).

The air is *driest* around February 19, at which time the relative humidity drops below 56% (mildly humid) three days out of four; it is *most humid* around September 12, exceeding 92% (very humid) three days out of four.

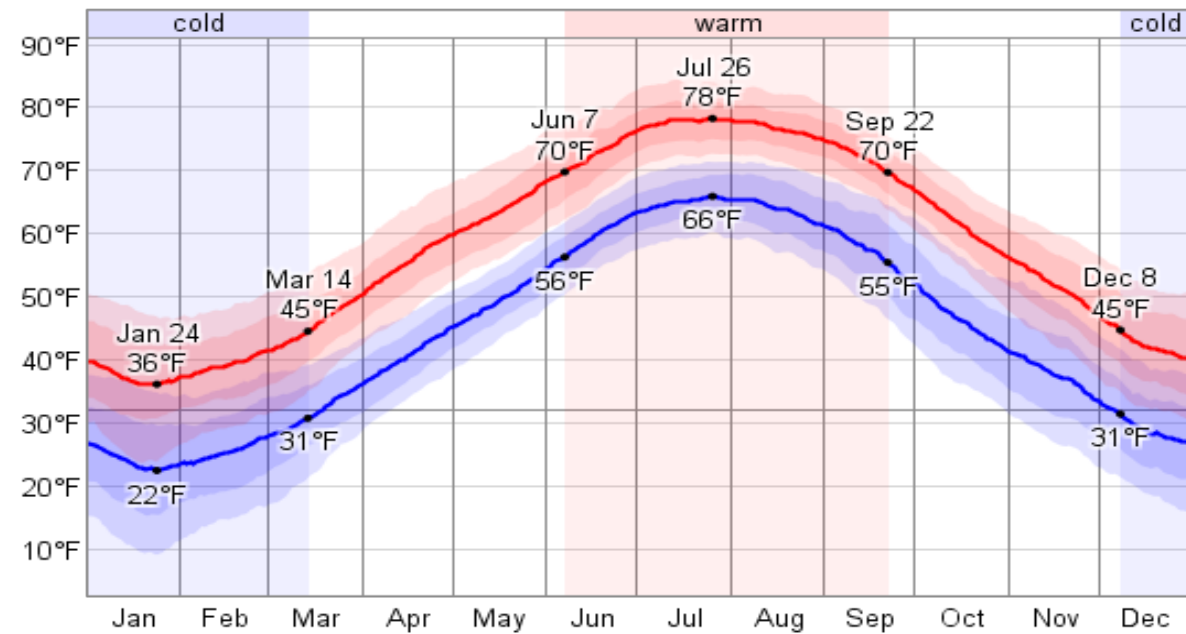
### Temperature

Over the course of a year, the temperature typically varies from 22°F to 78°F and is rarely below 9°F or above 85°F.

Relative Humidity



Daily High and Low Temperature



Bridgeport

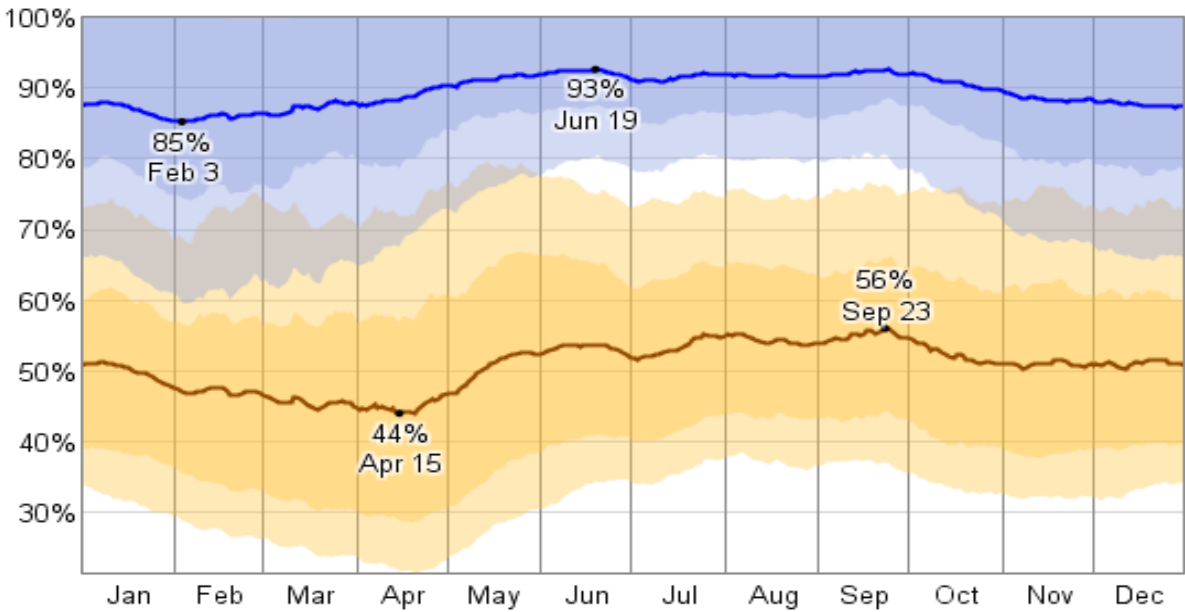
Humidity

The relative humidity typically ranges from 44% (comfortable) to 93% (very humid) over the course of the year, rarely dropping below 21% (dry) and reaching as high as 100% (very humid). The air is *driest* around April 15, at which time the relative humidity drops below 57% (mildly humid) three days out of four; it is *most humid* around June 19, exceeding 88% (very humid) three days out of four.

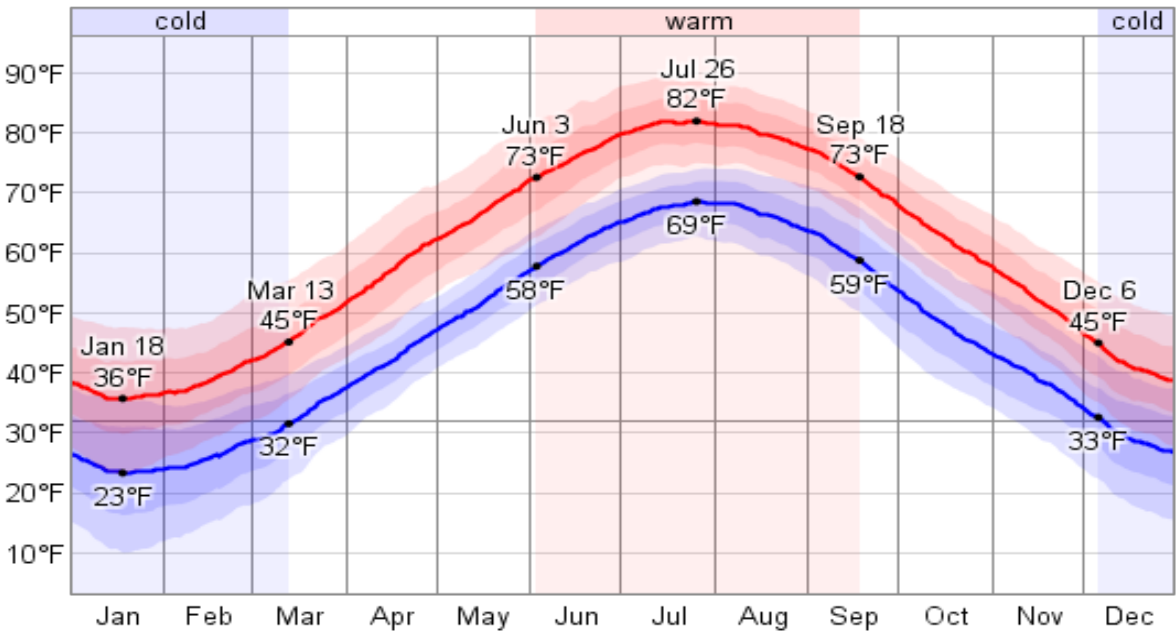
Temperature

Over the course of a year, the temperature typically varies from 23°F to 82°F and is rarely below 10°F or above 89°F.

Relative Humidity



Daily High and Low Temperature



## Chester

### Humidity

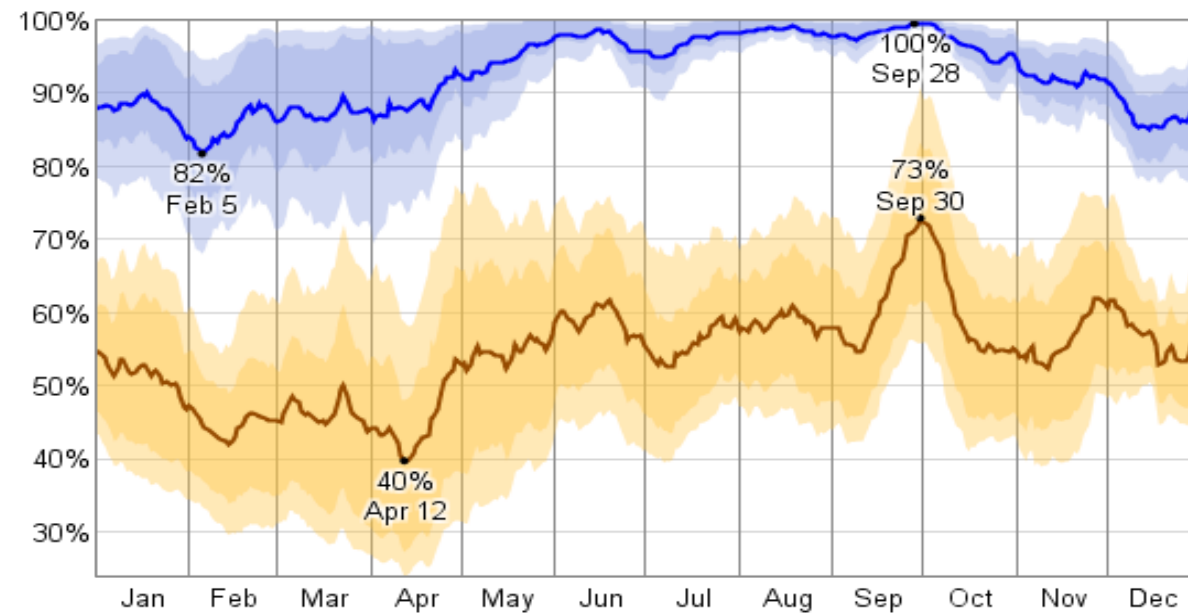
The relative humidity typically ranges from 40% (comfortable) to 100% (very humid) over the course of the year, rarely dropping below 24% (dry) and reaching as high as 100% (very humid).

The air is *driest* around April 12, at which time the relative humidity drops below 48% (comfortable) three days out of four; it is *most humid* around September 28, exceeding 99% (very humid) three days out of four.

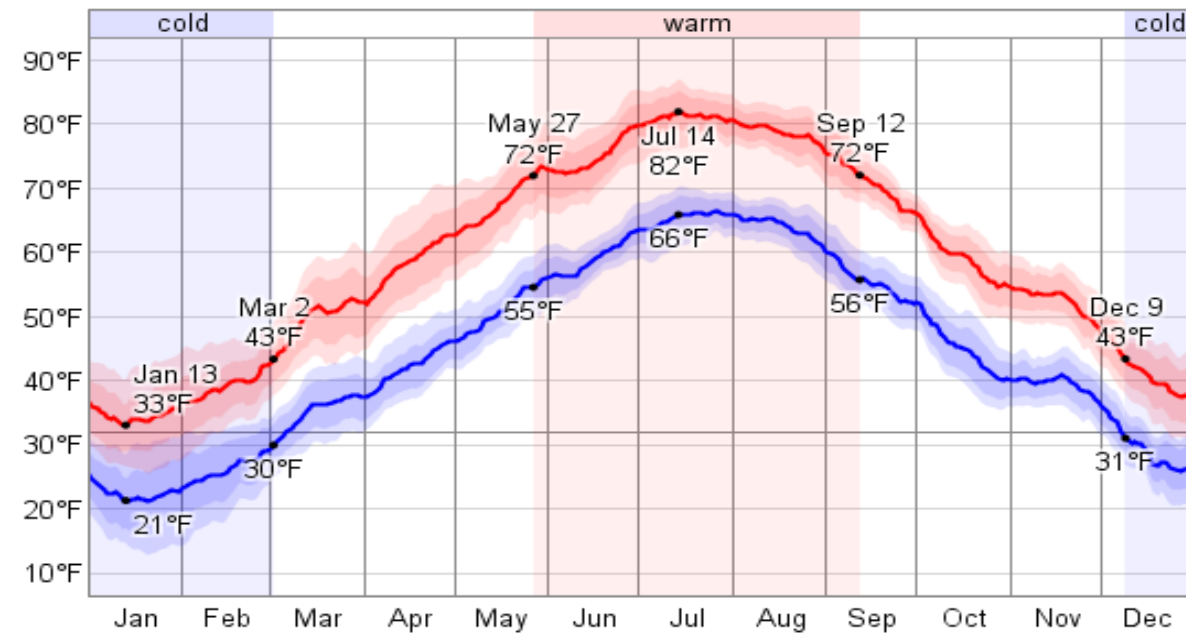
### Temperature

Over the course of a year, the temperature typically varies from 21°F to 82°F and is rarely below 13°F or above 87°F.

Relative Humidity



Daily High and Low Temperature



## Danbury

### Humidity

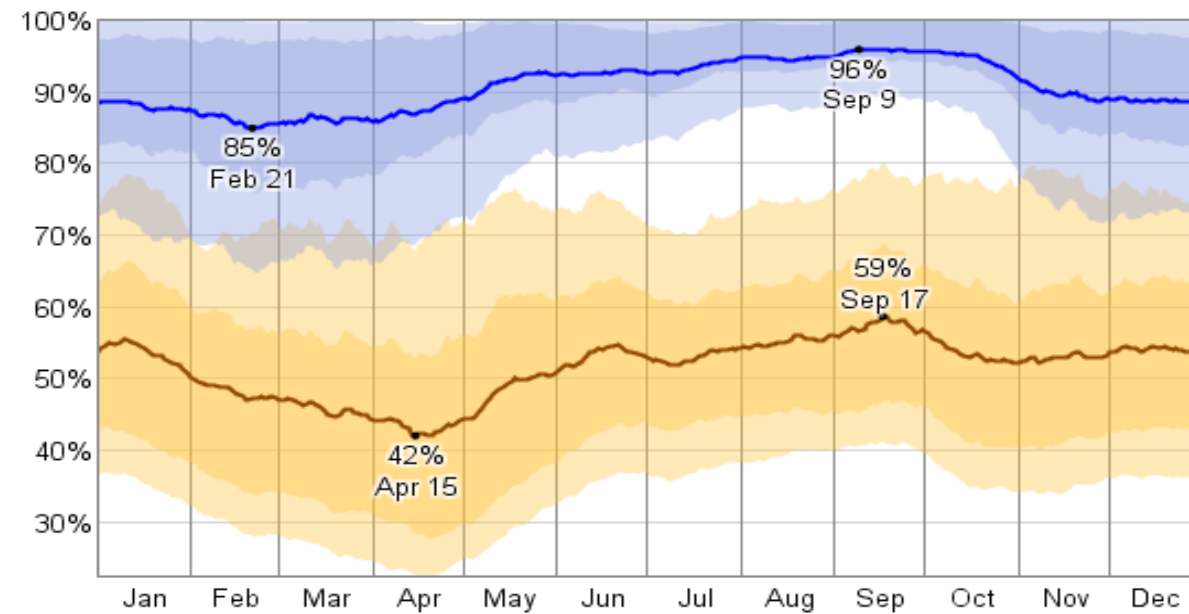
The relative humidity typically ranges from 42% (comfortable) to 96% (very humid) over the course of the year, rarely dropping below 22% (dry) and reaching as high as 100% (very humid).

The air is *driest* around April 15, at which time the relative humidity drops below 53% (mildly humid) three days out of four; it is *most humid* around September 9, exceeding 94% (very humid) three days out of four.

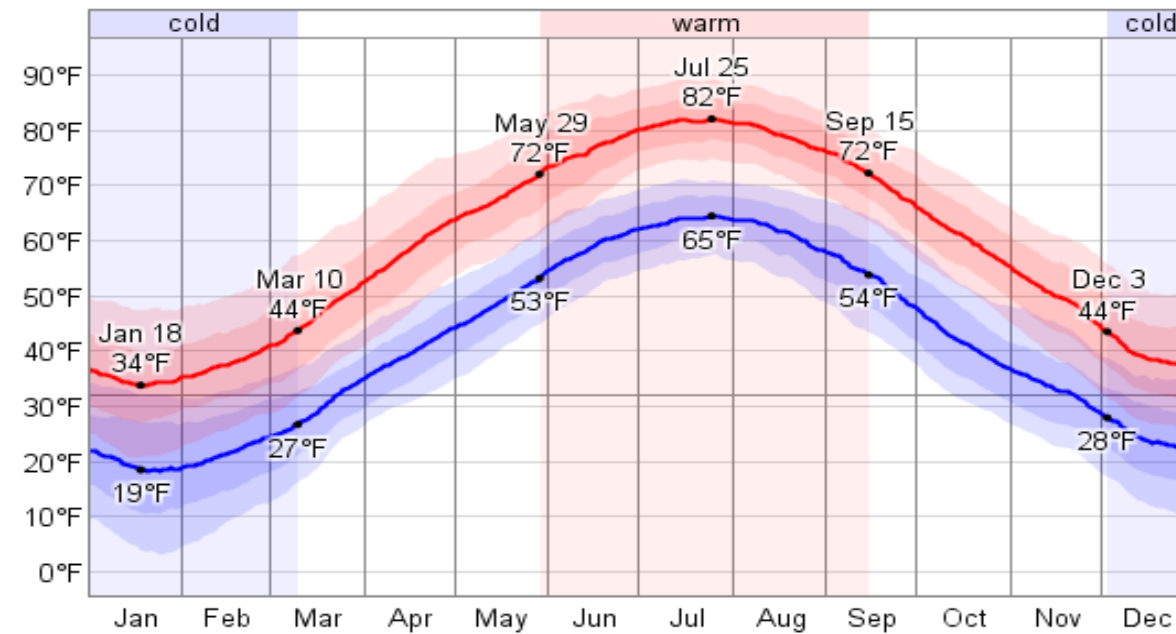
### Temperature

Over the course of a year, the temperature typically varies from 18°F to 82°F and is rarely below 3°F or above 89°F.

Relative Humidity



Daily High and Low Temperature



## Meriden

### Humidity

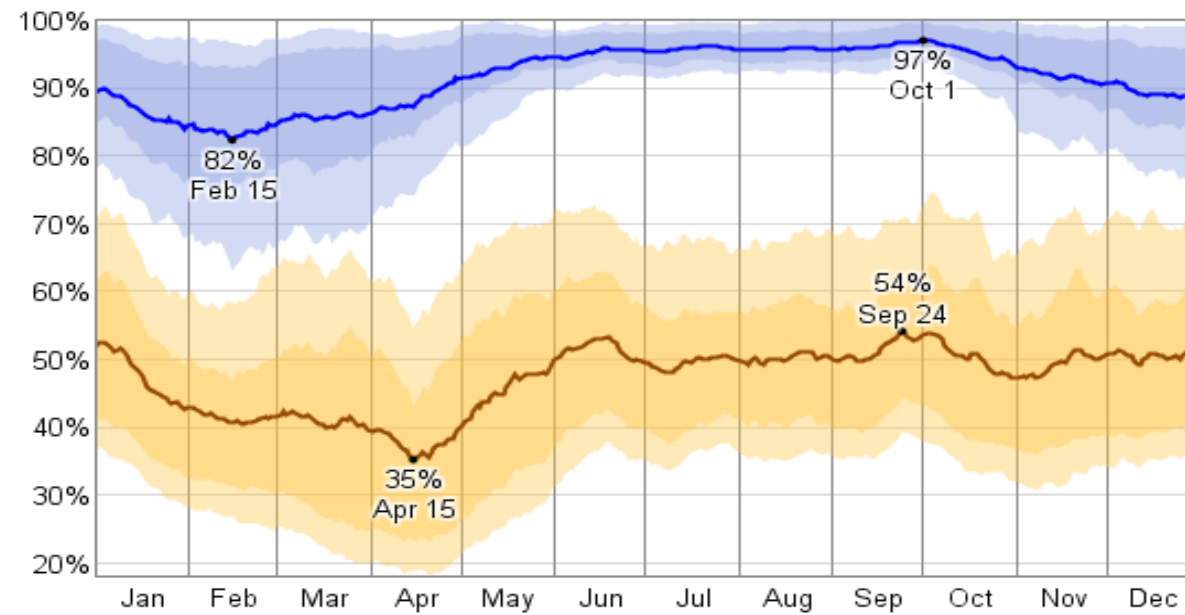
The relative humidity typically ranges from 35% (comfortable) to 97% (very humid) over the course of the year, rarely dropping below 18% (dry) and reaching as high as 100% (very humid).

The air is *driest* around April 15, at which time the relative humidity drops below 43% (comfortable) three days out of four; it is *most humid* around October 1, exceeding 96% (very humid) three days out of four.

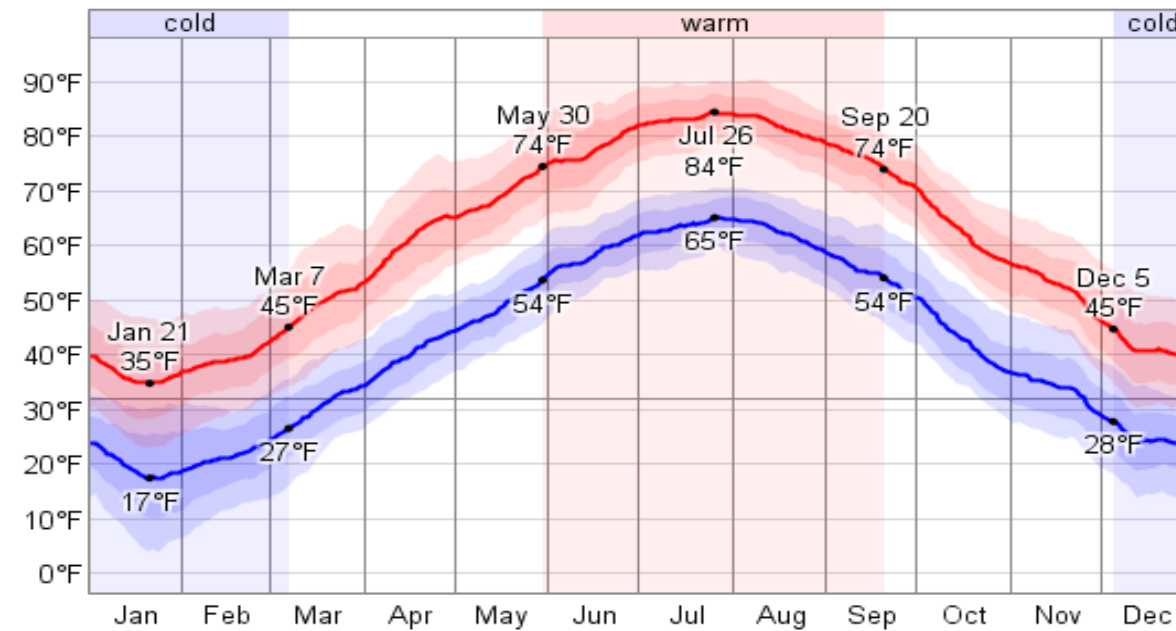
### Temperature

Over the course of a year, the temperature typically varies from 17°F to 84°F and is rarely below 4°F or above 90°F.

Relative Humidity



Daily High and Low Temperature





# New Haven

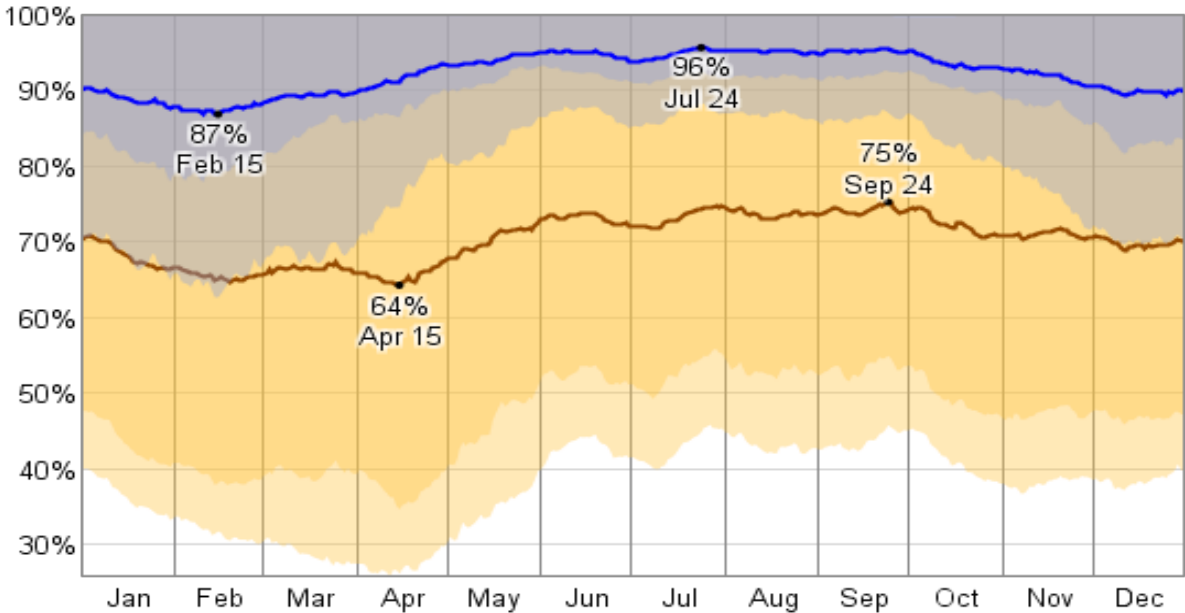
## Humidity

The relative humidity typically ranges from 64% (mildly humid) to 96% (very humid) over the course of the year, rarely dropping below 26% (dry) and reaching as high as 100% (very humid). The air is *driest* around April 15, at which time the relative humidity drops below 100% (very humid) three days out of four; it is *most humid* around July 24, exceeding 93% (very humid) three days out of four.

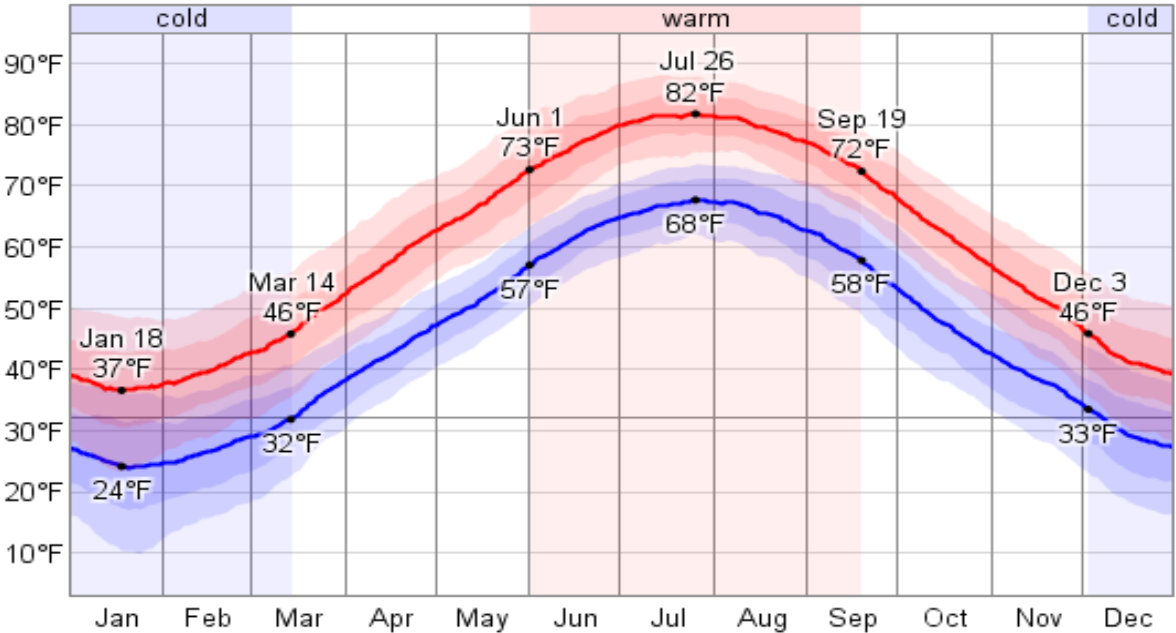
## Temperature

Over the course of a year, the temperature typically varies from 24°F to 82°F and is rarely below 10°F or above 88°F.

Relative Humidity



Daily High and Low Temperature





## Oxford

### Humidity

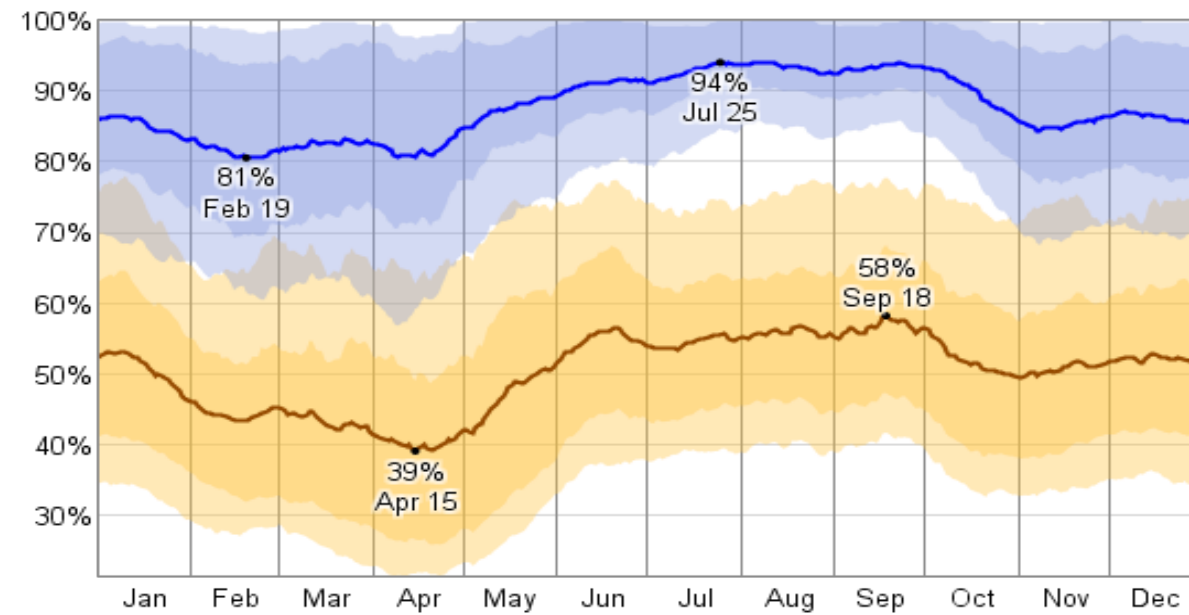
The relative humidity typically ranges from 39% (comfortable) to 94% (very humid) over the course of the year, rarely dropping below 21% (dry) and reaching as high as 100% (very humid).

The air is *driest* around April 15, at which time the relative humidity drops below 49% (comfortable) three days out of four; it is *most humid* around July 25, exceeding 92% (very humid) three days out of four.

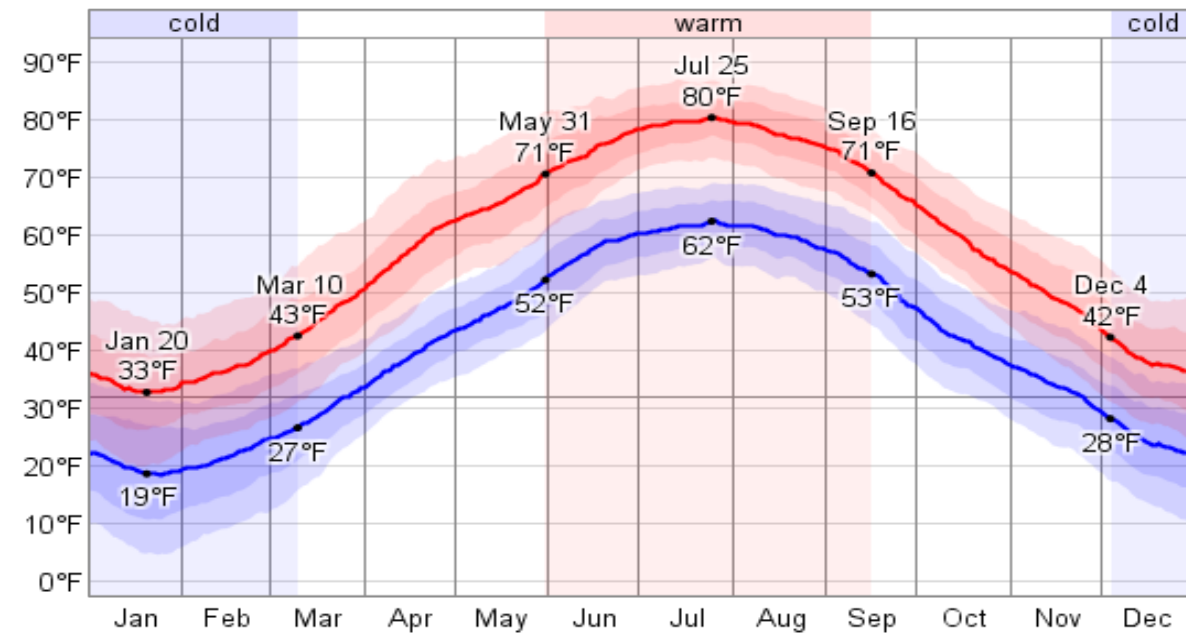
### Temperature

Over the course of a year, the temperature typically varies from 18°F to 80°F and is rarely below 5°F or above 87°F.

Relative Humidity



Daily High and Low Temperature



Willimantic

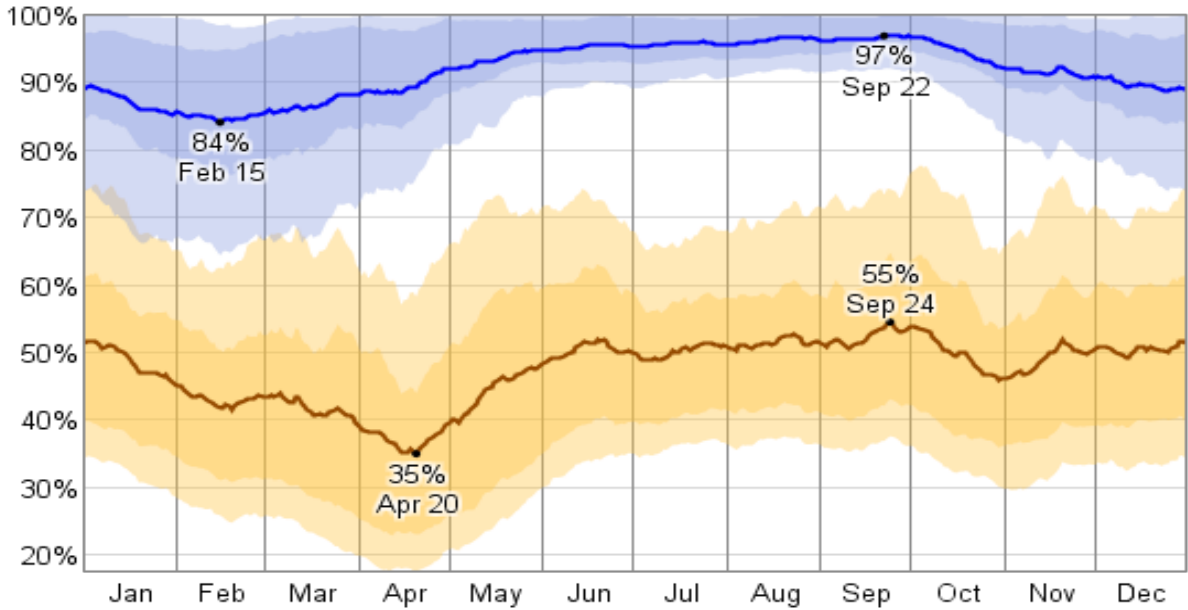
**Humidity**

The relative humidity typically ranges from 35% (comfortable) to 97% (very humid) over the course of the year, rarely dropping below 18% (dry) and reaching as high as 100% (very humid). The air is *driest* around April 20, at which time the relative humidity drops below 44% (comfortable) three days out of four; it is *most humid* around September 22, exceeding 95% (very humid) three days out of four.

**Temperature**

Over the course of a year, the temperature typically varies from 17°F to 83°F and is rarely below 3°F or above 89°F.

**Relative Humidity**



**Daily High and Low Temperature**

