

Fort Collins/Loveland

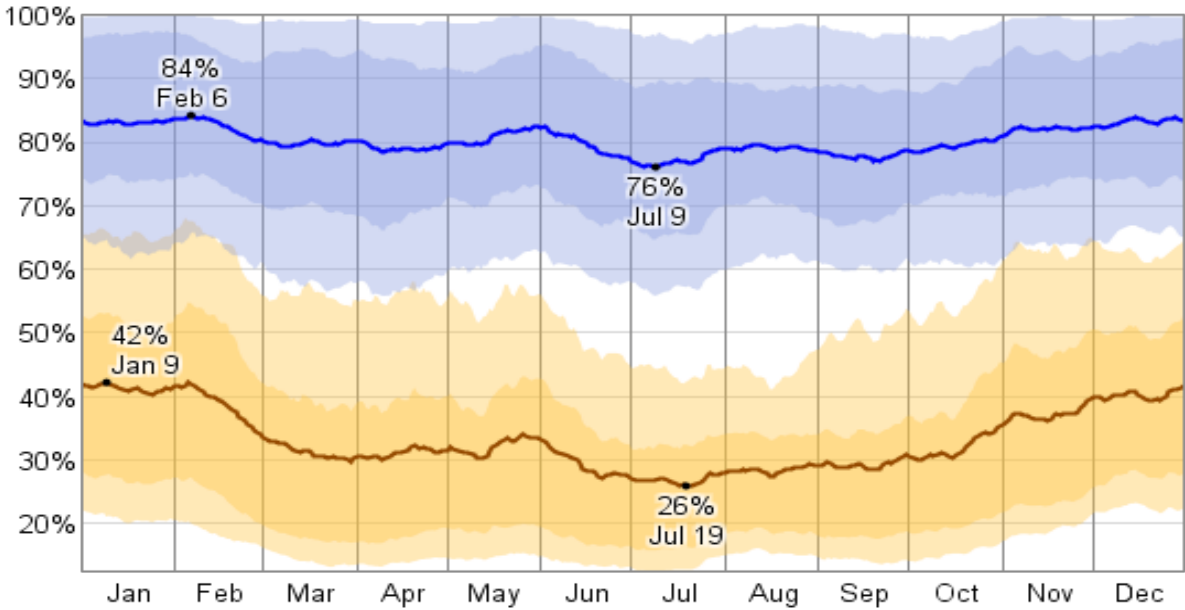
Humidity

The relative humidity typically ranges from 26% (dry) to 84% (humid) over the course of the year, rarely dropping below 13% (very dry) and reaching as high as 100% (very humid). The air is *driest* around July 19, at which time the relative humidity drops below 32% (comfortable) three days out of four; it is *most humid* around February 6, exceeding 75% (humid) three days out of four.

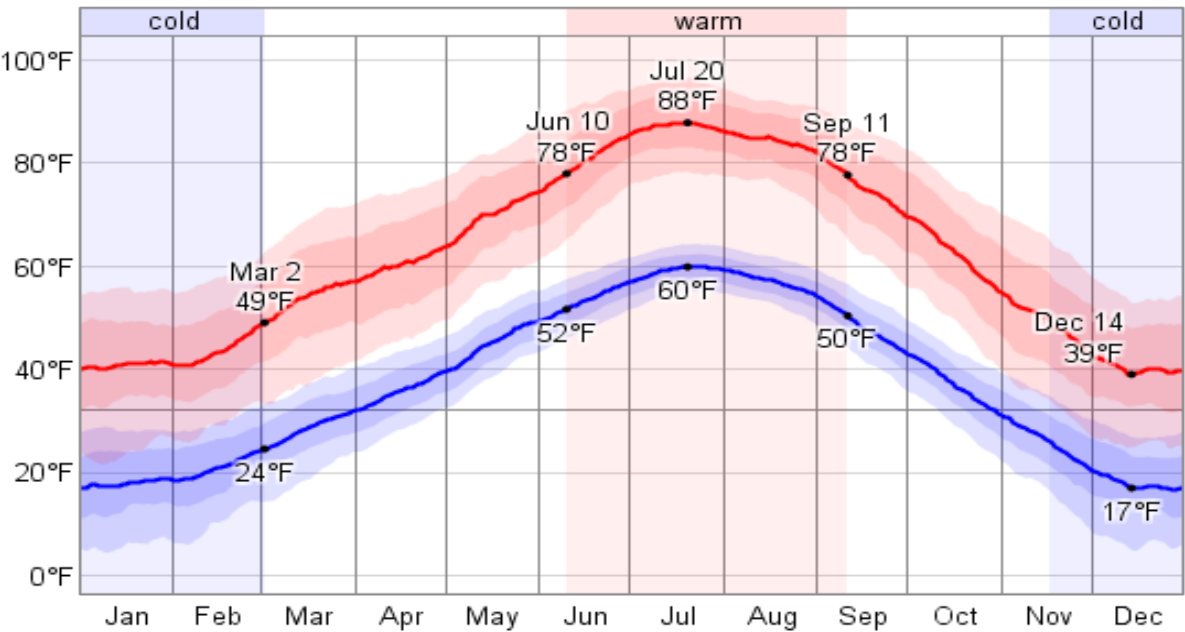
Temperature

Over the course of a year, the temperature typically varies from 17°F to 88°F and is rarely below 4°F or above 97°F.

Relative Humidity



Daily High and Low Temperature



Denver

Humidity

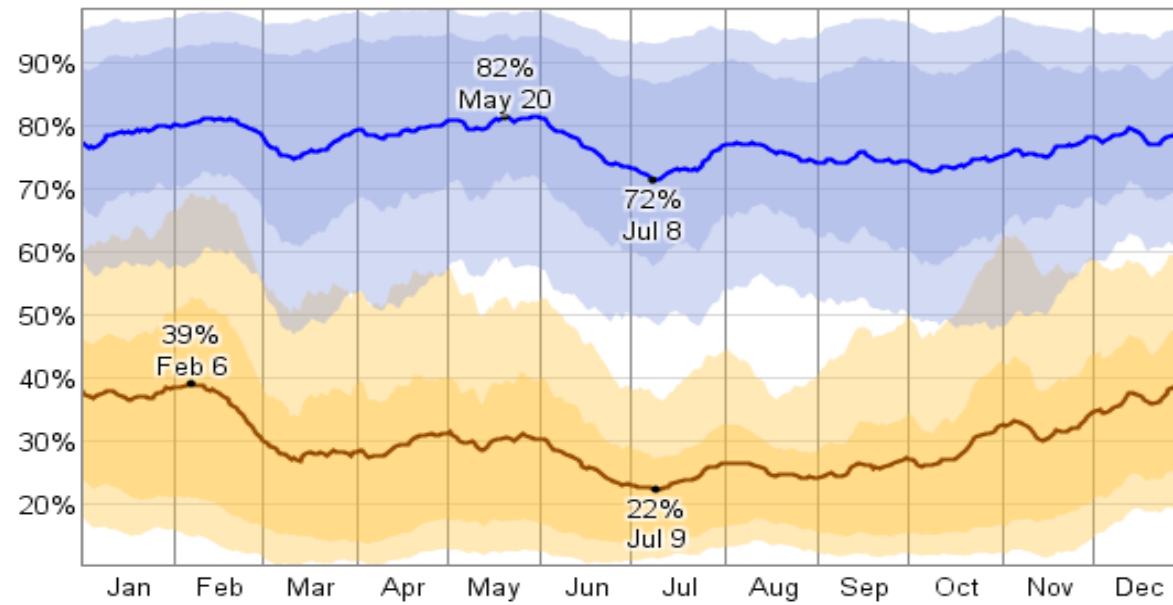
The relative humidity typically ranges from 22% (dry) to 82% (humid) over the course of the year, rarely dropping below 10% (very dry) and reaching as high as 99% (very humid).

The air is *driest* around July 9, at which time the relative humidity drops below 27% (dry) three days out of four; it is *most humid* around May 20, exceeding 72% (humid) three days out of four.

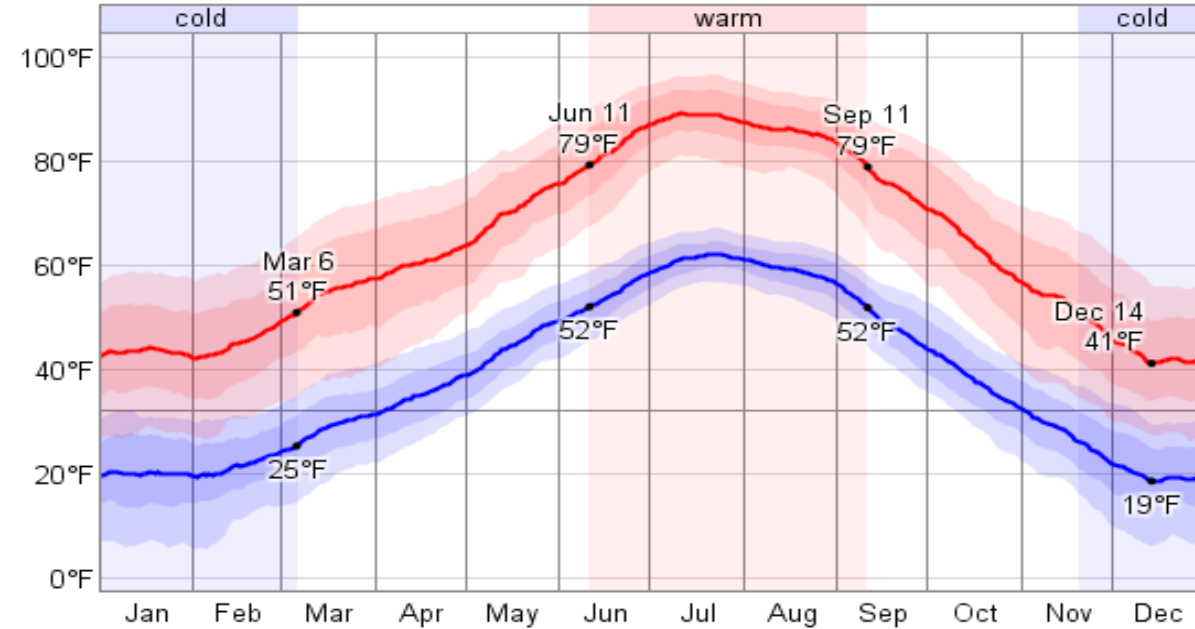
Temperature

Over the course of a year, the temperature typically varies from 18°F to 89°F and is rarely below 5°F or above 97°F.

Relative Humidity



Daily High and Low Temperature



Colorado Springs (United States Air Force Academy Airfield)

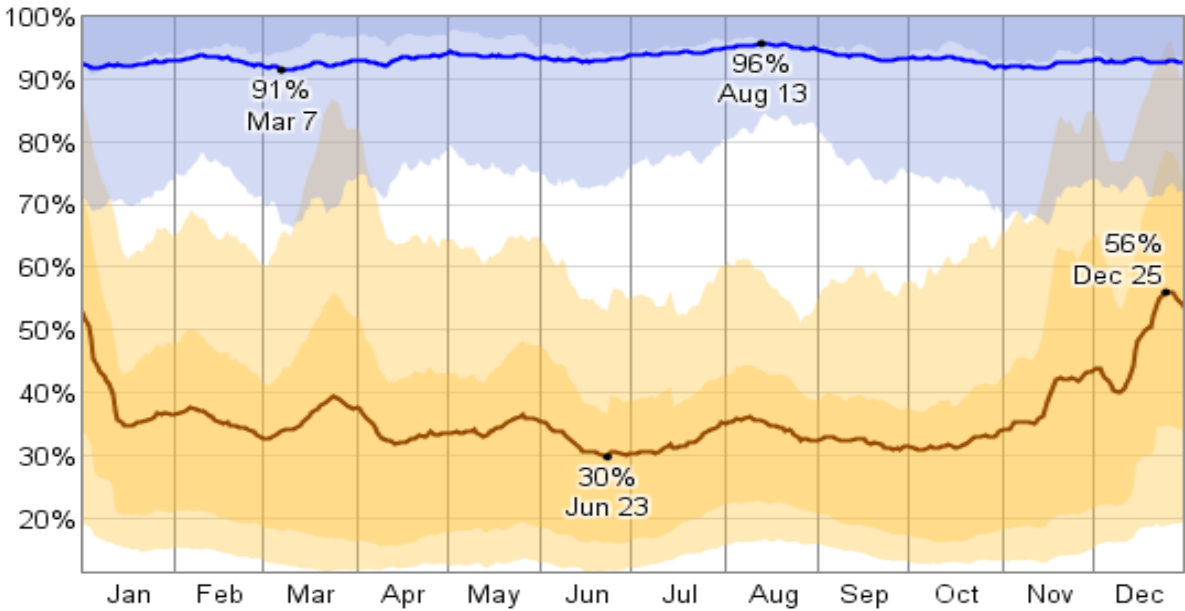
Humidity

The relative humidity typically ranges from 30% (dry) to 96% (very humid) over the course of the year, rarely dropping below 11% (very dry) and reaching as high as 100% (very humid). The air is *driest* around June 23, at which time the relative humidity drops below 37% (comfortable) three days out of four; it is *most humid* around August 13, exceeding 96% (very humid) three days out of four.

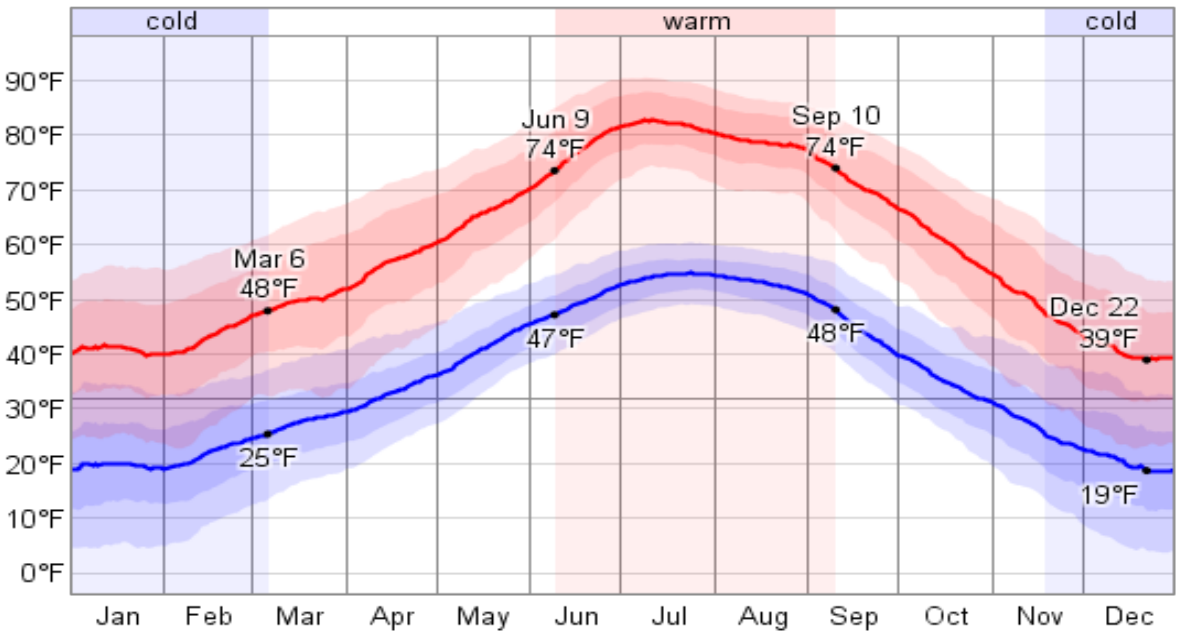
Temperature

Over the course of a year, the temperature typically varies from 18°F to 83°F and is rarely below 4°F or above 91°F.

Relative Humidity



Daily High and Low Temperature



Pueblo

Humidity

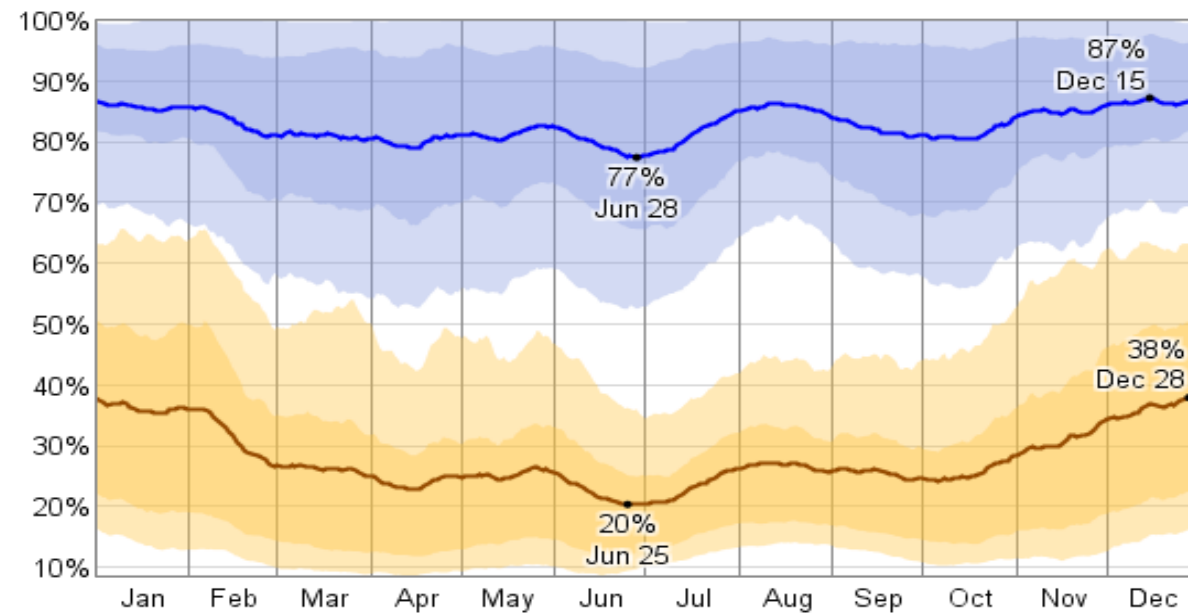
The relative humidity typically ranges from 20% (dry) to 87% (very humid) over the course of the year, rarely dropping below 9% (very dry) and reaching as high as 100% (very humid).

The air is *driest* around June 25, at which time the relative humidity drops below 25% (dry) three days out of four; it is *most humid* around December 15, exceeding 80% (humid) three days out of four.

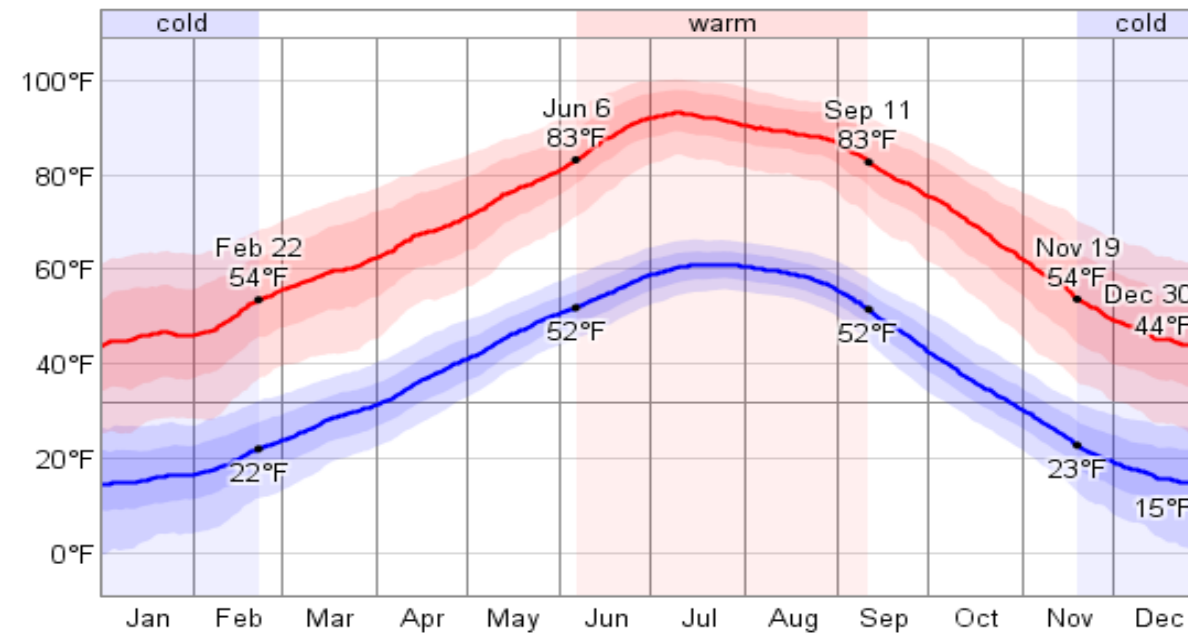
Temperature

Over the course of a year, the temperature typically varies from 14°F to 93°F and is rarely below -0°F or above 100°F.

Relative Humidity



Daily High and Low Temperature



Lamar

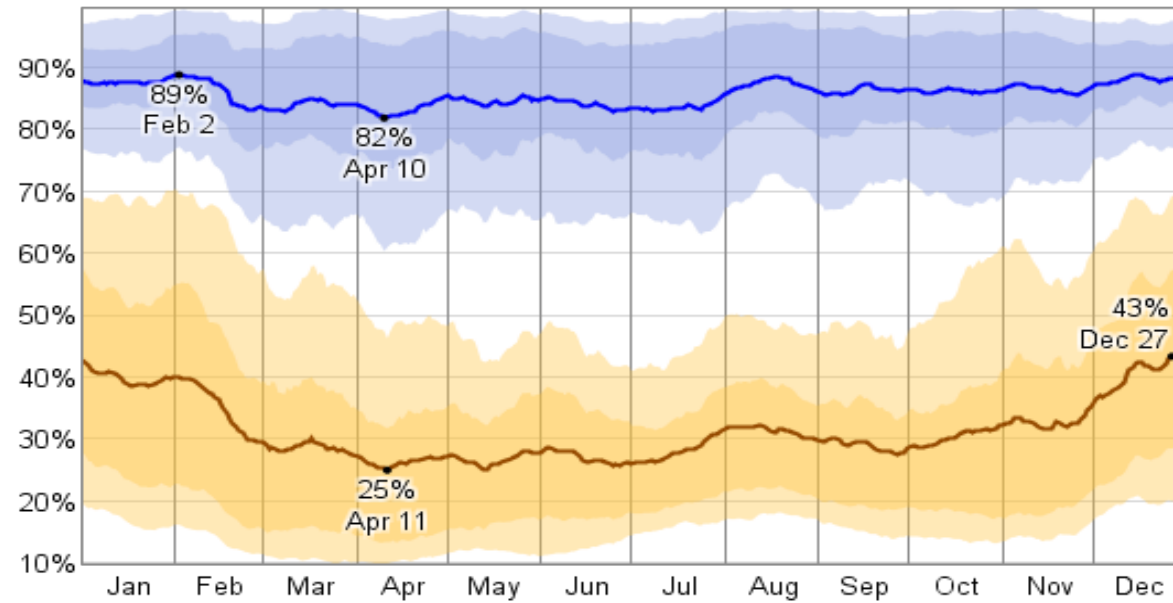
Humidity

The relative humidity typically ranges from 25% (dry) to 89% (very humid) over the course of the year, rarely dropping below 10% (very dry) and reaching as high as 100% (very humid). The air is *driest* around April 11, at which time the relative humidity drops below 32% (comfortable) three days out of four; it is *most humid* around February 2, exceeding 85% (humid) three days out of four.

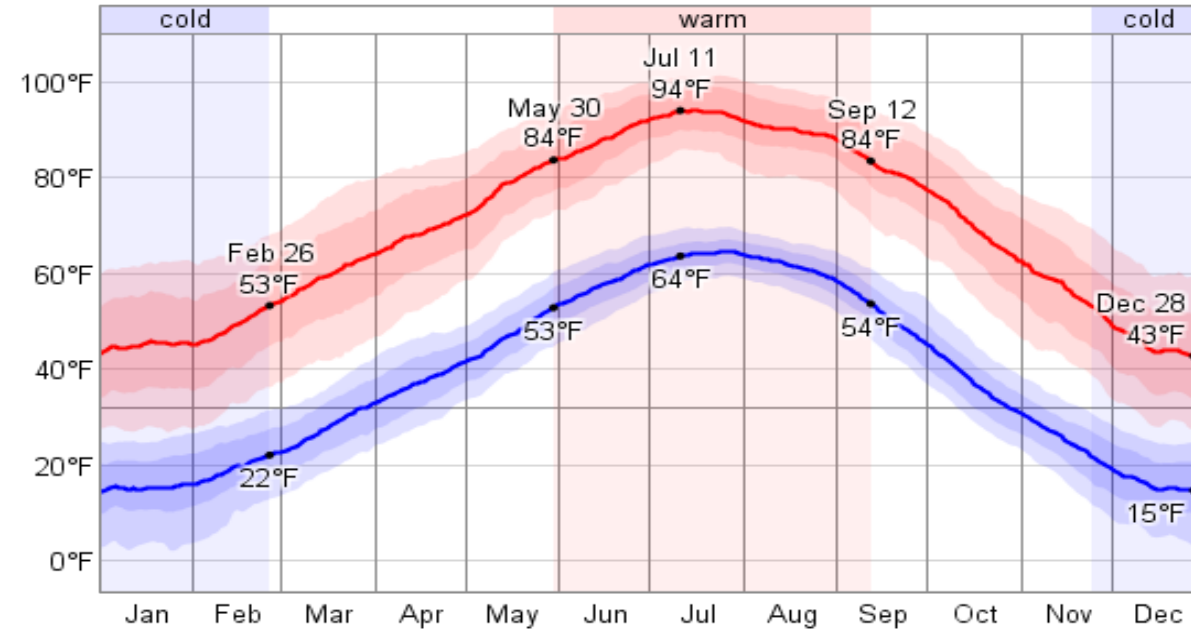
Temperature

Over the course of a year, the temperature typically varies from 14°F to 94°F and is rarely below 2°F or above 101°F.

Relative Humidity



Daily High and Low Temperature



Trinidad

Humidity

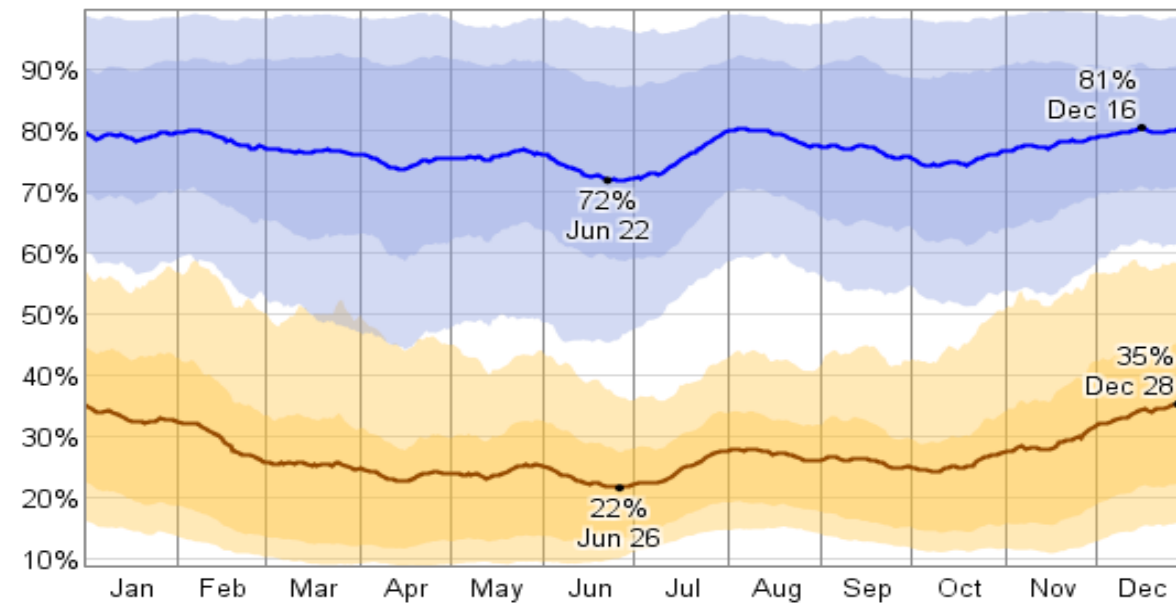
The relative humidity typically ranges from 22% (dry) to 81% (humid) over the course of the year, rarely dropping below 9% (very dry) and reaching as high as 100% (very humid).

The air is *driest* around June 26, at which time the relative humidity drops below 28% (dry) three days out of four; it is *most humid* around December 16, exceeding 71% (humid) three days out of four.

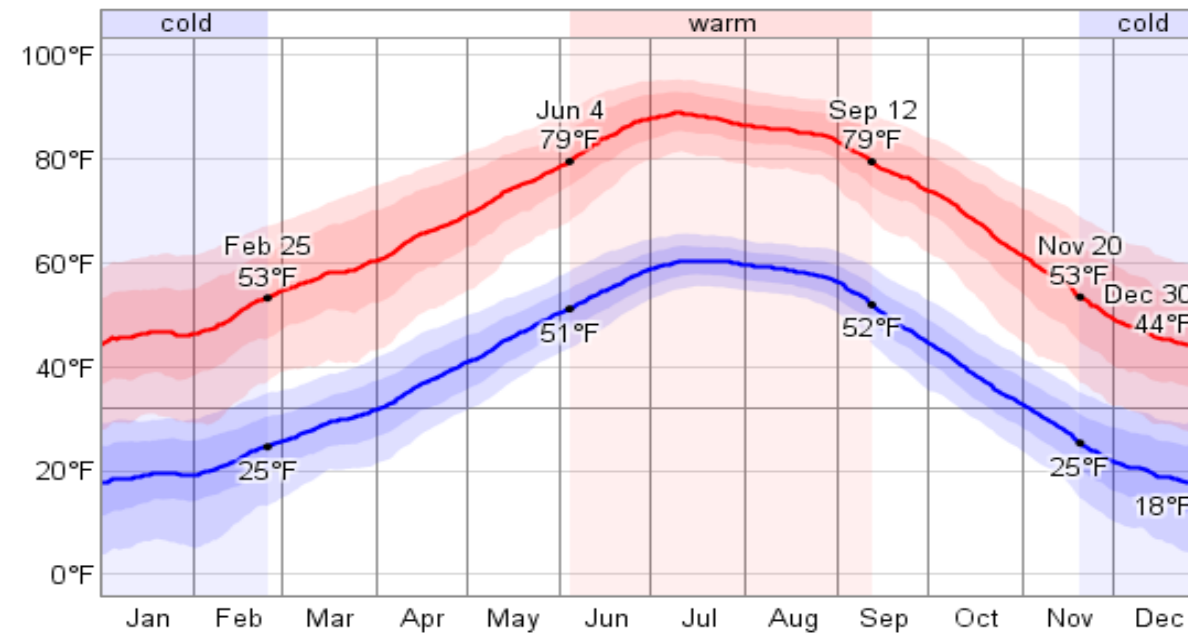
Temperature

Over the course of a year, the temperature typically varies from 18°F to 89°F and is rarely below 4°F or above 95°F.

Relative Humidity



Daily High and Low Temperature



Alamosa

Humidity

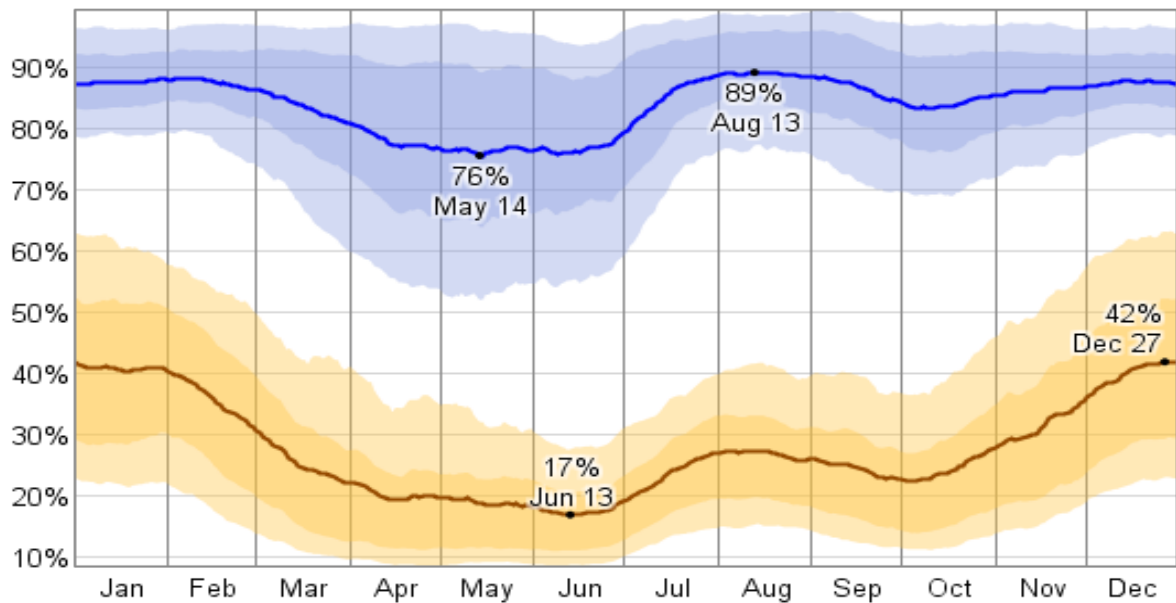
The relative humidity typically ranges from 17% (dry) to 89% (very humid) over the course of the year, rarely dropping below 9% (very dry) and reaching as high as 100% (very humid).

The air is *driest* around June 13, at which time the relative humidity drops below 21% (dry) three days out of four; it is *most humid* around August 13, exceeding 85% (humid) three days out of four.

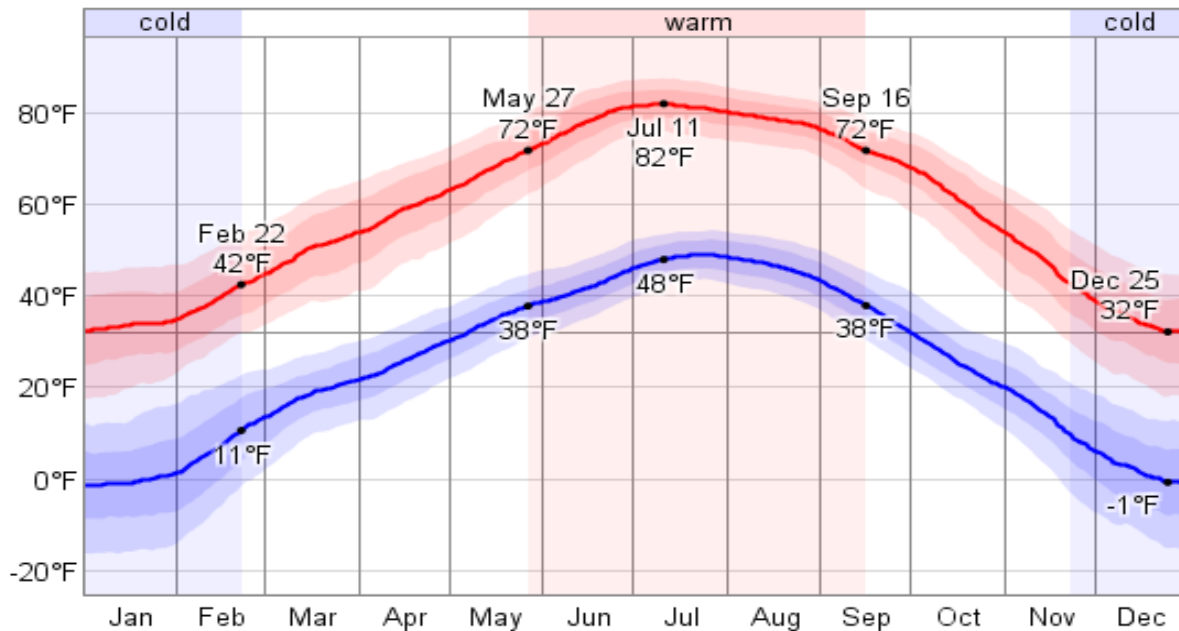
Temperature

Over the course of a year, the temperature typically varies from -1°F to 82°F and is rarely below -16°F or above 87°F.

Relative Humidity



Daily High and Low Temperature



Salida

Humidity

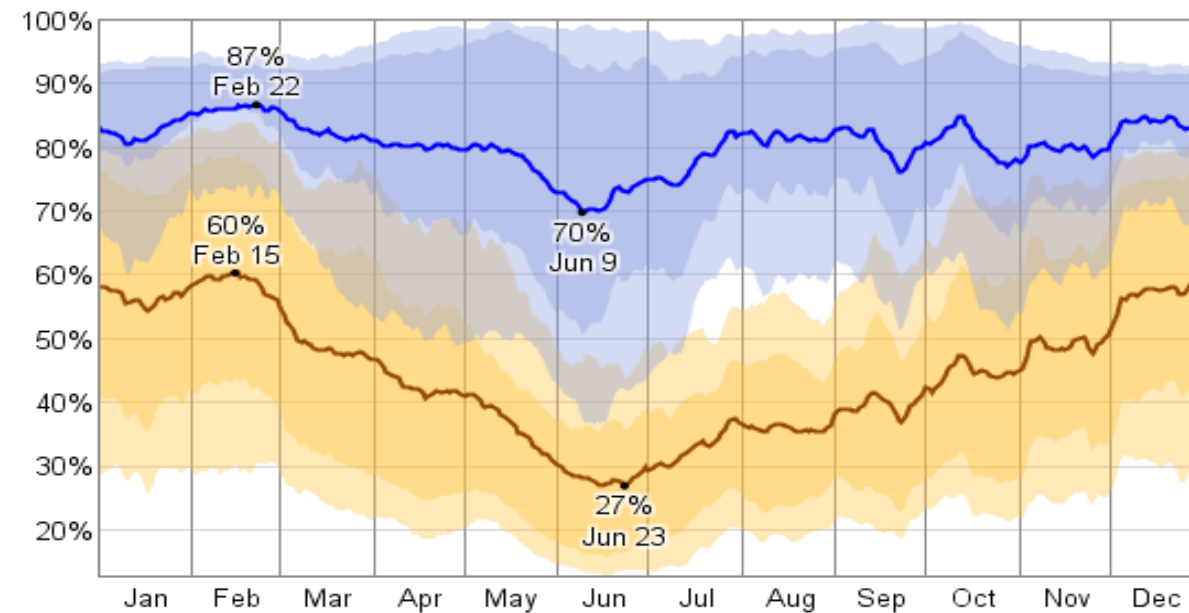
The relative humidity typically ranges from 27% (dry) to 87% (very humid) over the course of the year, rarely dropping below 13% (very dry) and reaching as high as 100% (very humid).

The air is *driest* around June 23, at which time the relative humidity drops below 36% (comfortable) three days out of four; it is *most humid* around February 22, exceeding 85% (very humid) three days out of four.

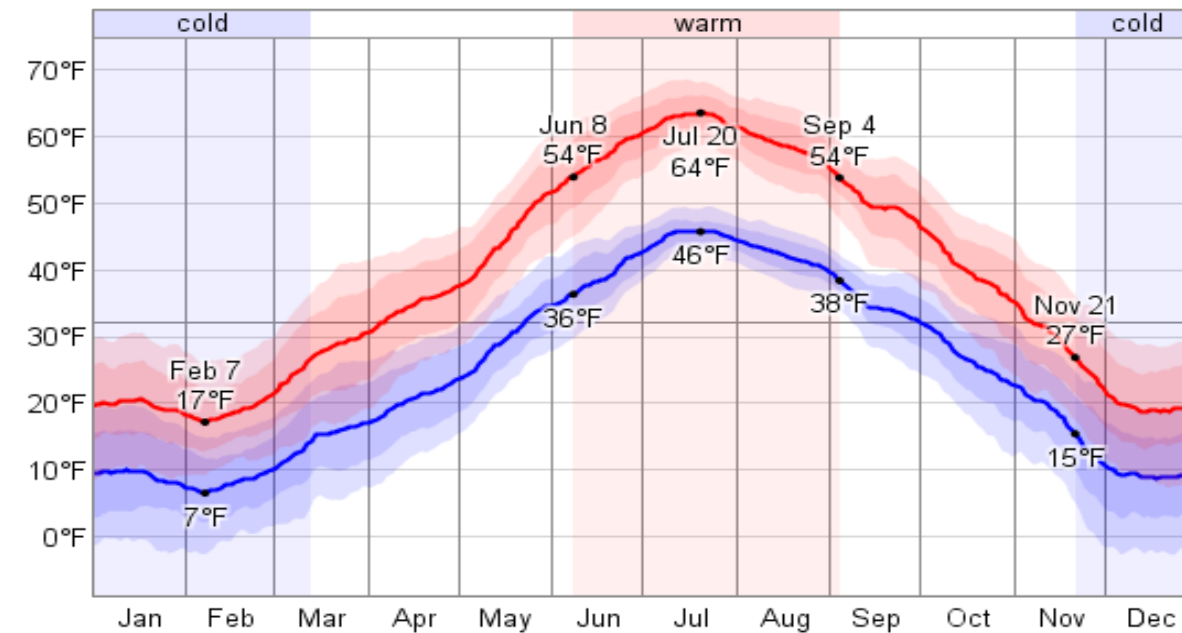
Temperature

Over the course of a year, the temperature typically varies from 7°F to 64°F and is rarely below -3°F or above 69°F.

Relative Humidity



Daily High and Low Temperature



Gunnison

Humidity

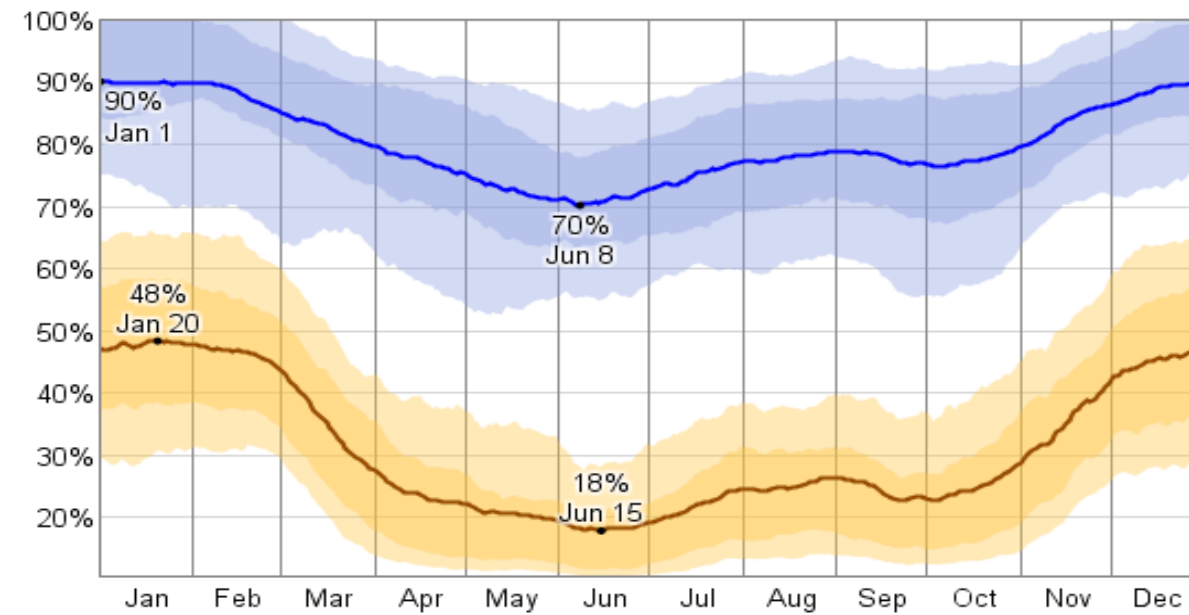
The relative humidity typically ranges from 18% (dry) to 90% (very humid) over the course of the year, rarely dropping below 11% (very dry) and reaching as high as 100% (very humid).

The air is *driest* around June 15, at which time the relative humidity drops below 21% (dry) three days out of four; it is *most humid* around January 1, exceeding 84% (humid) three days out of four.

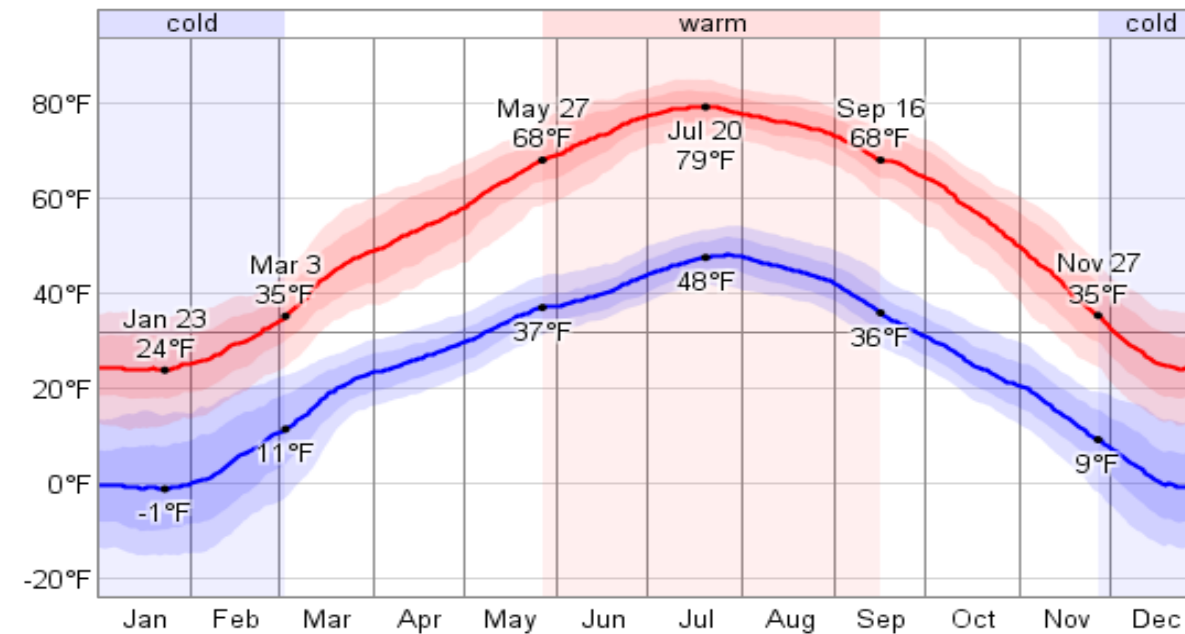
Temperature

Over the course of a year, the temperature typically varies from -1°F to 79°F and is rarely below -15°F or above 85°F.

Relative Humidity



Daily High and Low Temperature



Grand Junction

Humidity

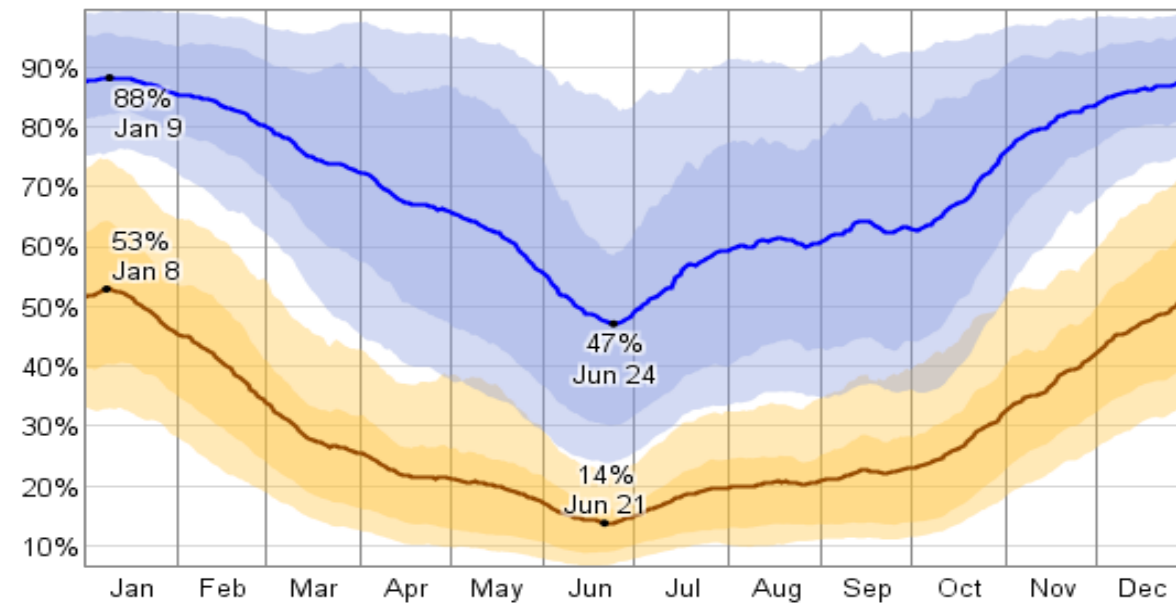
The relative humidity typically ranges from 14% (very dry) to 88% (very humid) over the course of the year, rarely dropping below 7% (very dry) and reaching as high as 100% (very humid).

The air is *driest* around June 21, at which time the relative humidity drops below 16% (dry) three days out of four; it is *most humid* around January 9, exceeding 82% (humid) three days out of four.

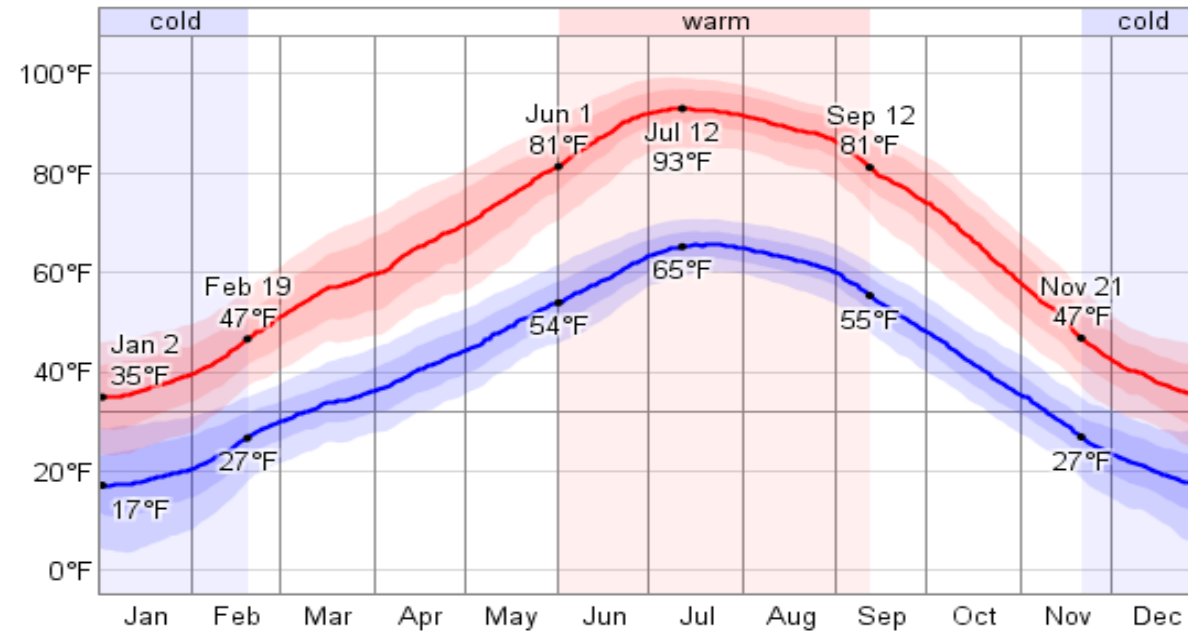
Temperature

Over the course of a year, the temperature typically varies from 17°F to 93°F and is rarely below 4°F or above 99°F.

Relative Humidity



Daily High and Low Temperature



Durango

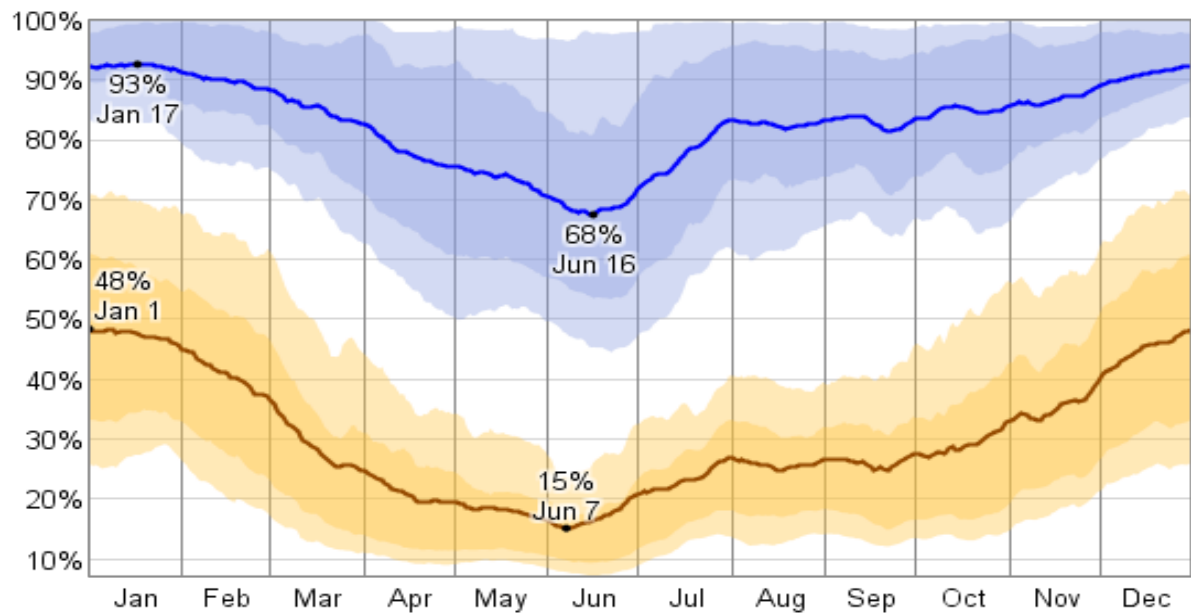
Humidity

The relative humidity typically ranges from 15% (dry) to 93% (very humid) over the course of the year, rarely dropping below 7% (very dry) and reaching as high as 100% (very humid). The air is *driest* around June 7, at which time the relative humidity drops below 18% (dry) three days out of four; it is *most humid* around January 17, exceeding 89% (very humid) three days out of four.

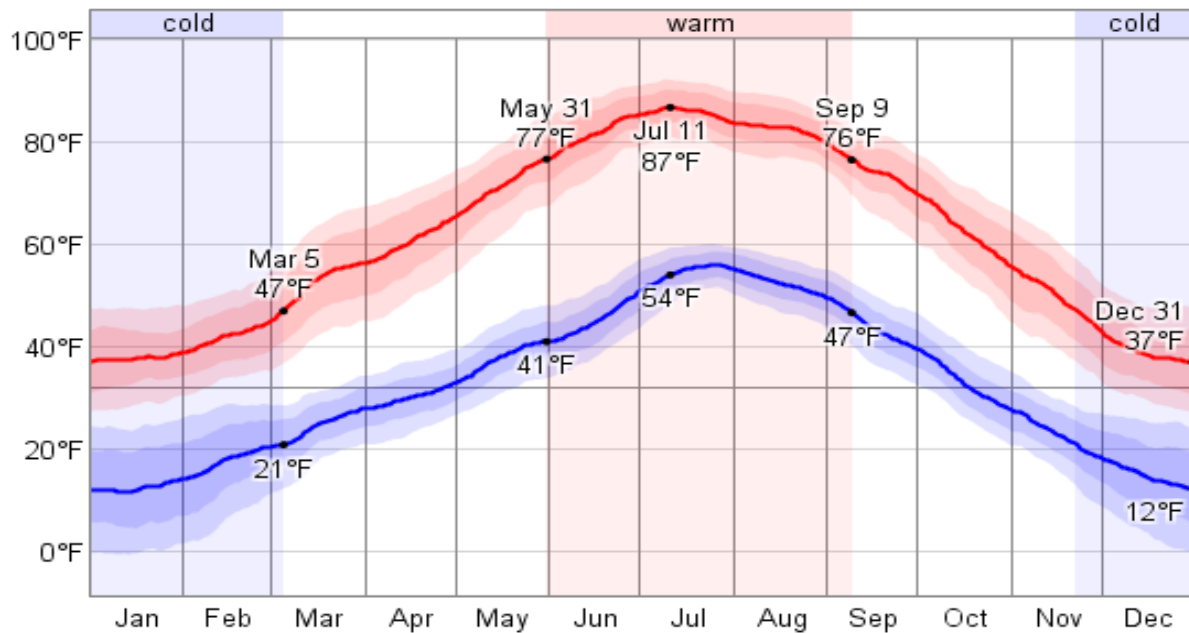
Temperature

Over the course of a year, the temperature typically varies from 12°F to 87°F and is rarely below -1°F or above 92°F.

Relative Humidity



Daily High and Low Temperature



Humidity

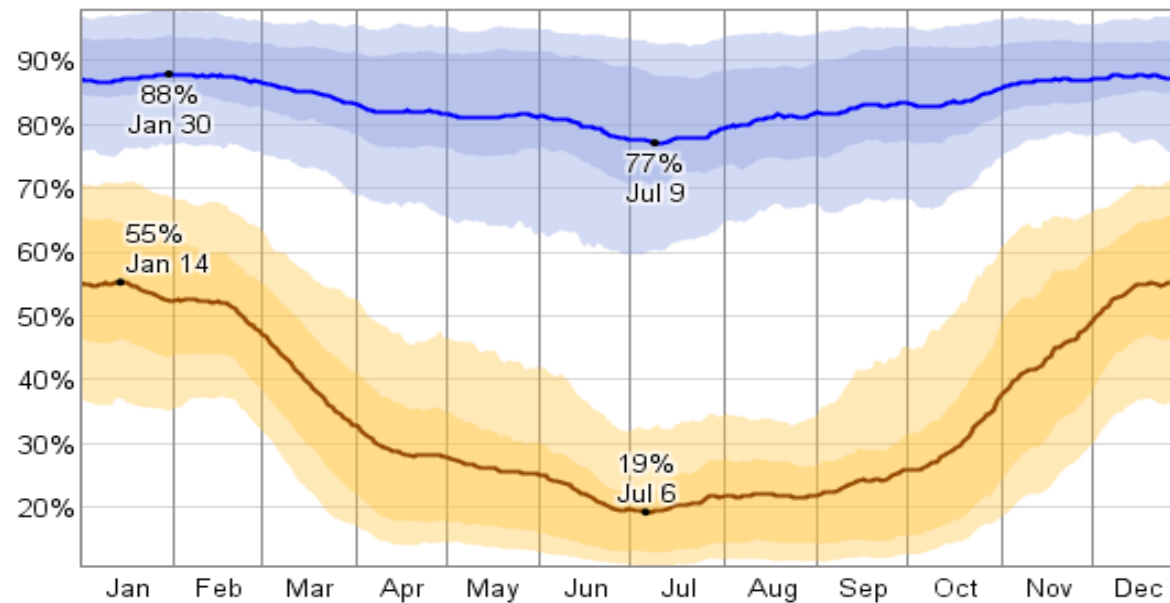
The relative humidity typically ranges from 19% (dry) to 88% (very humid) over the course of the year, rarely dropping below 11% (very dry) and reaching as high as 98% (very humid).

The air is *driest* around July 6, at which time the relative humidity drops below 22% (dry) three days out of four; it is *most humid* around January 30, exceeding 86% (very humid) three days out of four.

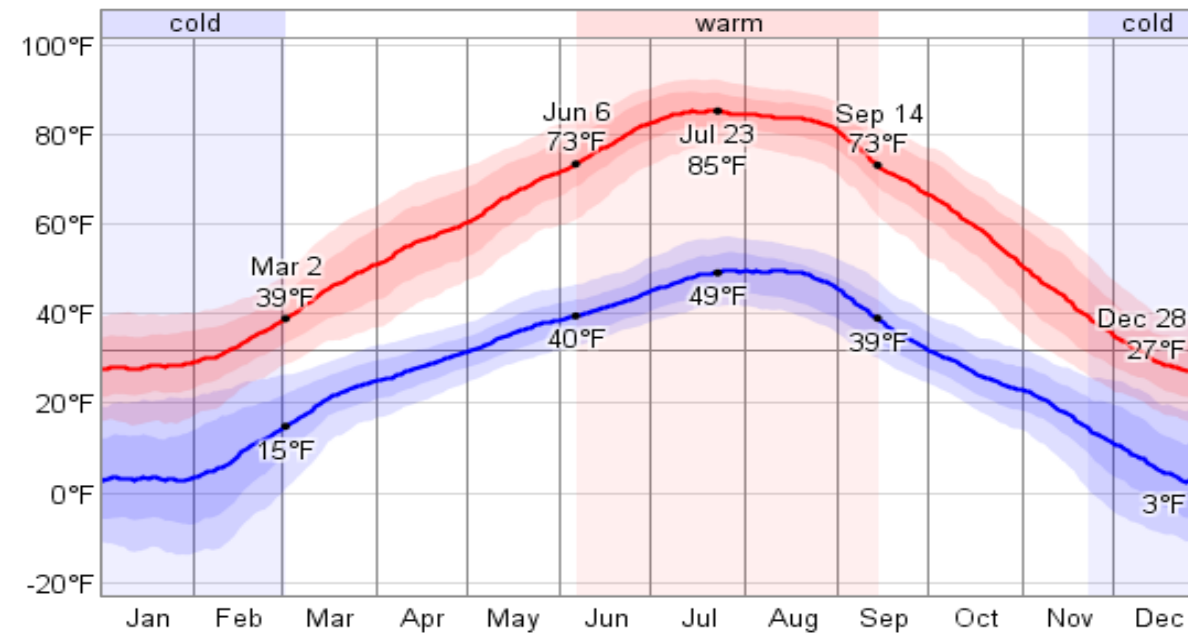
Temperature

Over the course of a year, the temperature typically varies from 3°F to 85°F and is rarely below -14°F or above 92°F.

Relative Humidity



Daily High and Low Temperature



Aspen

Humidity

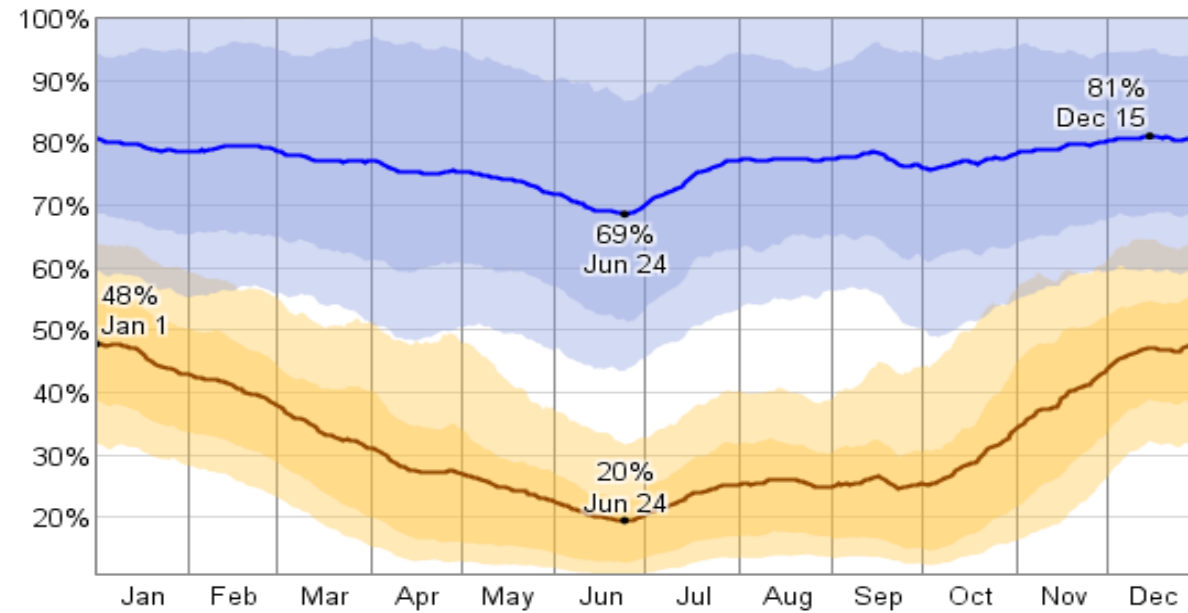
The relative humidity typically ranges from 20% (dry) to 81% (humid) over the course of the year, rarely dropping below 11% (very dry) and reaching as high as 100% (very humid).

The air is *driest* around June 24, at which time the relative humidity drops below 23% (dry) three days out of four; it is *most humid* around December 15, exceeding 69% (mildly humid) three days out of four.

Temperature

Over the course of a year, the temperature typically varies from 12°F to 80°F and is rarely below -0°F or above 86°F.

Relative Humidity



Daily High and Low Temperature

